

# *Indigo Petals*

by Beth Grove







IPET 4977 MU



IPET 4977 MU (reduced; 42" shown)

All images shown at 100%, unless noted. Cover 65%



# Indigo Petals

Fabric Collection by Beth Grove



IPET 4980 P

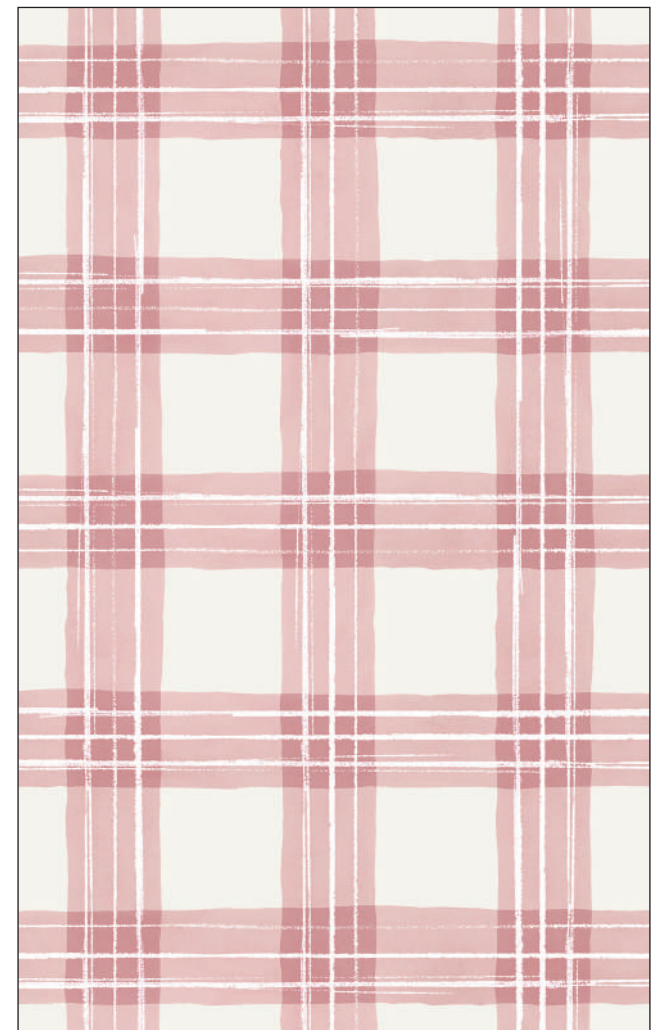
IPET 4980 B



IPET 4982 B



IPET 4982 G



IPET 4982 P



100% cotton ◆ Cold wash & dry ◆ 44"/45" ◆ Colors may vary due to printing process



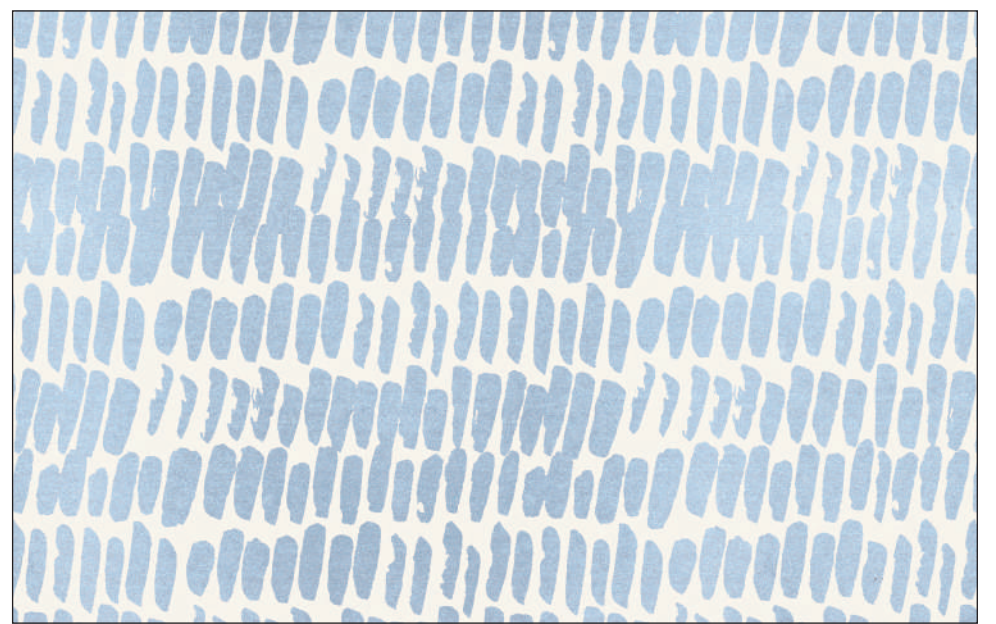


IPET 4978 E

IPET 4978 N



IPET 4983 MU



IPET 4981 B

Not Intended for Children's Sleepwear





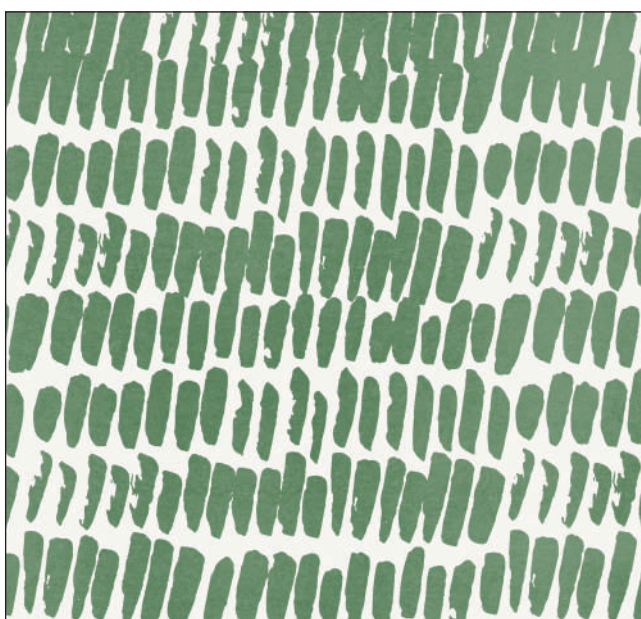
IPET 4979 P



IPET 4979 B



IPET 4979 G



IPET 4981 G



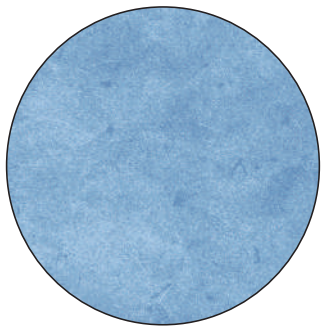
IPET 4981 P



IPET 4981 N



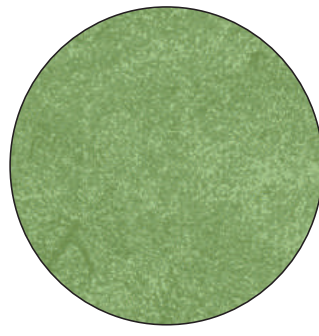
### BLENDER SUGGESTIONS



SUE6 302 BB



SUE6 302 DN

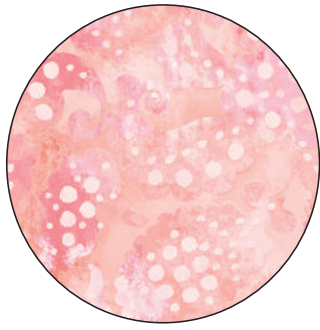


SUEM 300 M

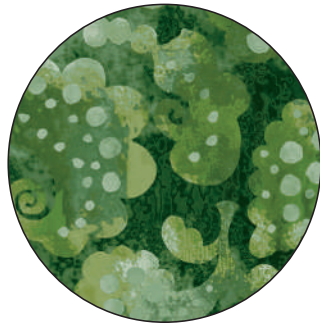


WHIM 4410 P

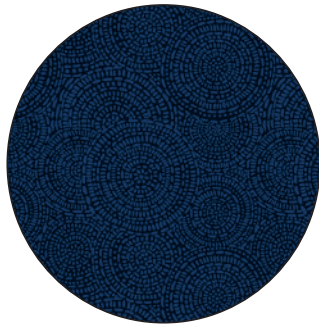
### 108" BACKING SUGGESTIONS



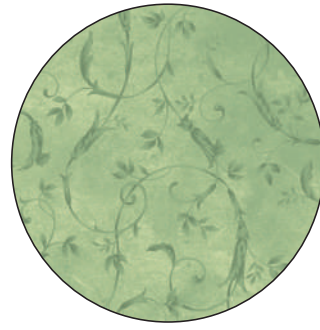
DADR 4358 J



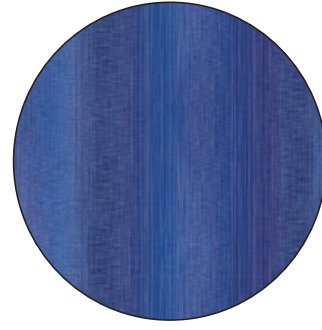
DADR 4358 GG



BLW2 4014 N



BLW2 4013 LG



OMBR 4498 B



Quilt size: approximately 49" x 55"



Quilt design by Cyndi Hershey

Pattern available at: [www.p&btex.com](http://www.p&btex.com) when the fabric ships.

**FABRIC REQUIREMENTS\***

IPET 4978 E.....	1 yard
IPET 4978 N.....	1 yard
IPET 4980 P.....	1/8 yard
IPET 4981 B.....	3/4 yard
IPET 4981 N.....	3/4 yard
IPET 4982 B.....	1 1/4 yards
IPET 4983 MU.....	1/4 yard
Total yardage.....	5 1/8 yards

*\*These yardages are estimates ONLY and may change on the pattern when it becomes available.*



A division of Ocean State Innovations  
208 Clock Tower Square, Portsmouth, RI 02871  
800-351-9087 • [www.pbtex.com](http://www.pbtex.com)