



FLOWER SHOW  
SUNRISE

**LIBERTY.**  
FABRICS





## A NOTE FROM LIBERTY

The Flower Show quilting collections from Liberty Fabrics celebrate the ‘Best in Show’, bringing together botanical designs from across Liberty’s iconic print archive. Drawing inspiration from the glory and tradition of classic British flower shows, the collection features diverse flower forms united in a cacophony of colour, illustrating Liberty’s rich heritage of floral design.

Flower Show Sunrise captures the beauty and magic of daybreak – a golden sun breaking over the horizon, bringing the promise of a new day. Fresh greens, cornflower blues, sunshine yellows and blossom pinks combine to create a sweet and optimistic palette, guaranteed to bring any crafting project into full bloom.

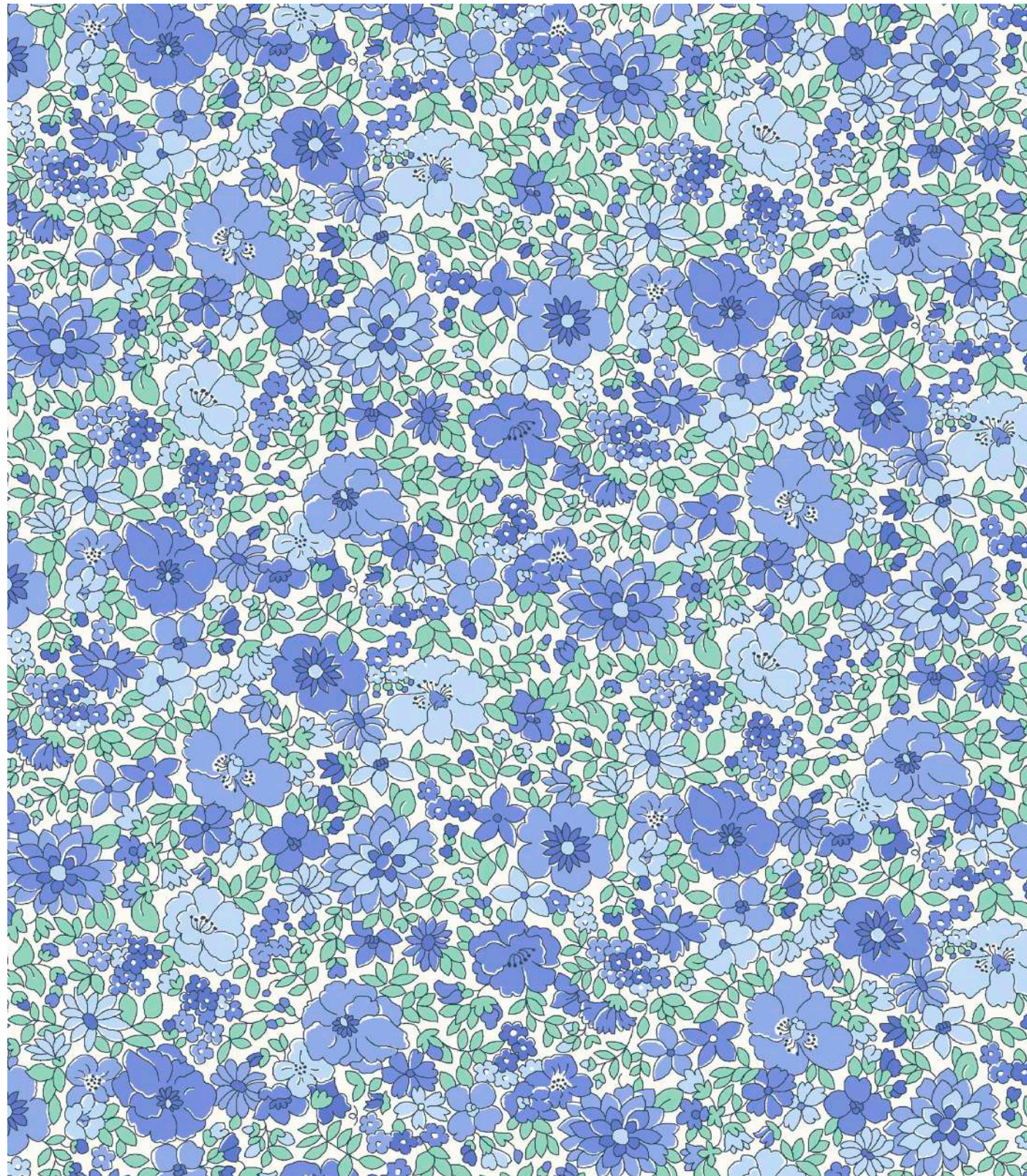
The collection is traditionally screen printed onto Lasenby cotton, a base specifically developed for quilting and craft projects.

**LIBERTY.**  
FABRICS

Whilst every effort has been made to ensure colour consistency, please be aware that due to the nature of the product and the print process, slight variances may occur in colour definition between this document and the fabric.

© 2021 Liberty Fabrics. All Rights Reserved.

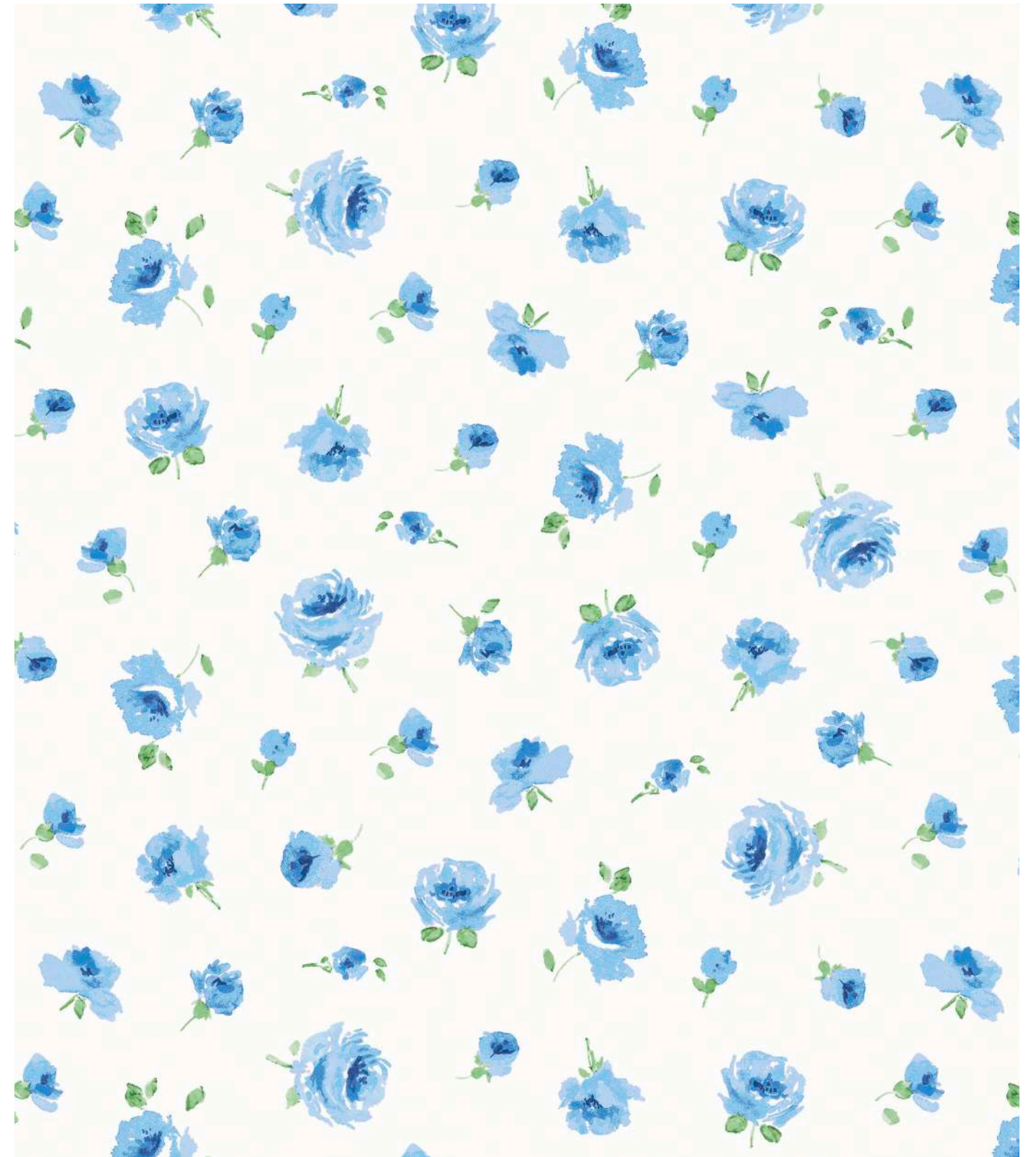




## ARLEY GARDEN

First created in 1966 and even included in our Liberty Classics collections during the early 1980's, Arley Gardens features a harmonious composition of block-coloured flowers, drawn with a very fine outline.

Lasenby Cotton Item Code. 04775725F DC. 30379

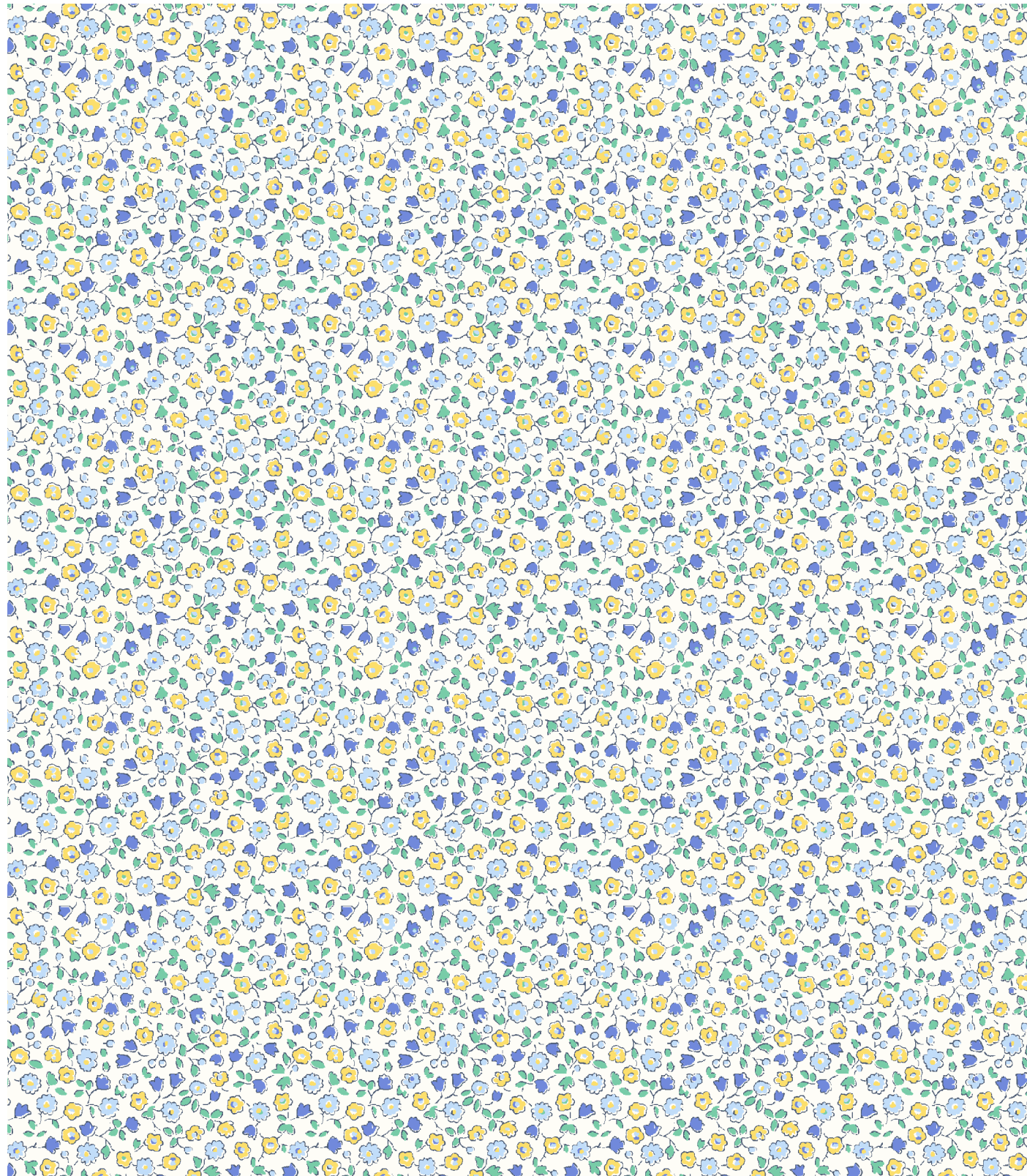


## MARY ROSE

This romantic rose pattern was hand-painted for Liberty in 1997 and has since been included in various of our Classic collections during the early 2000's. Timeless and elegant, the delicate watercolour roses evoke a sense of comfort, familiarity and nostalgia.

Lasenby Cotton Item Code. 04775962C DC. 31429





## SUFFOLK FIELDS

The earliest version of this print appears in one of Liberty's archival books dating back to 1939. Revived during the 1970's and recently redrawn for our Flower Show quilting collection, this design demonstrates the timeless appeal of a typical Liberty ditsy floral.

Lasenby Cotton    Item Code. 04775730F    DC. 30384

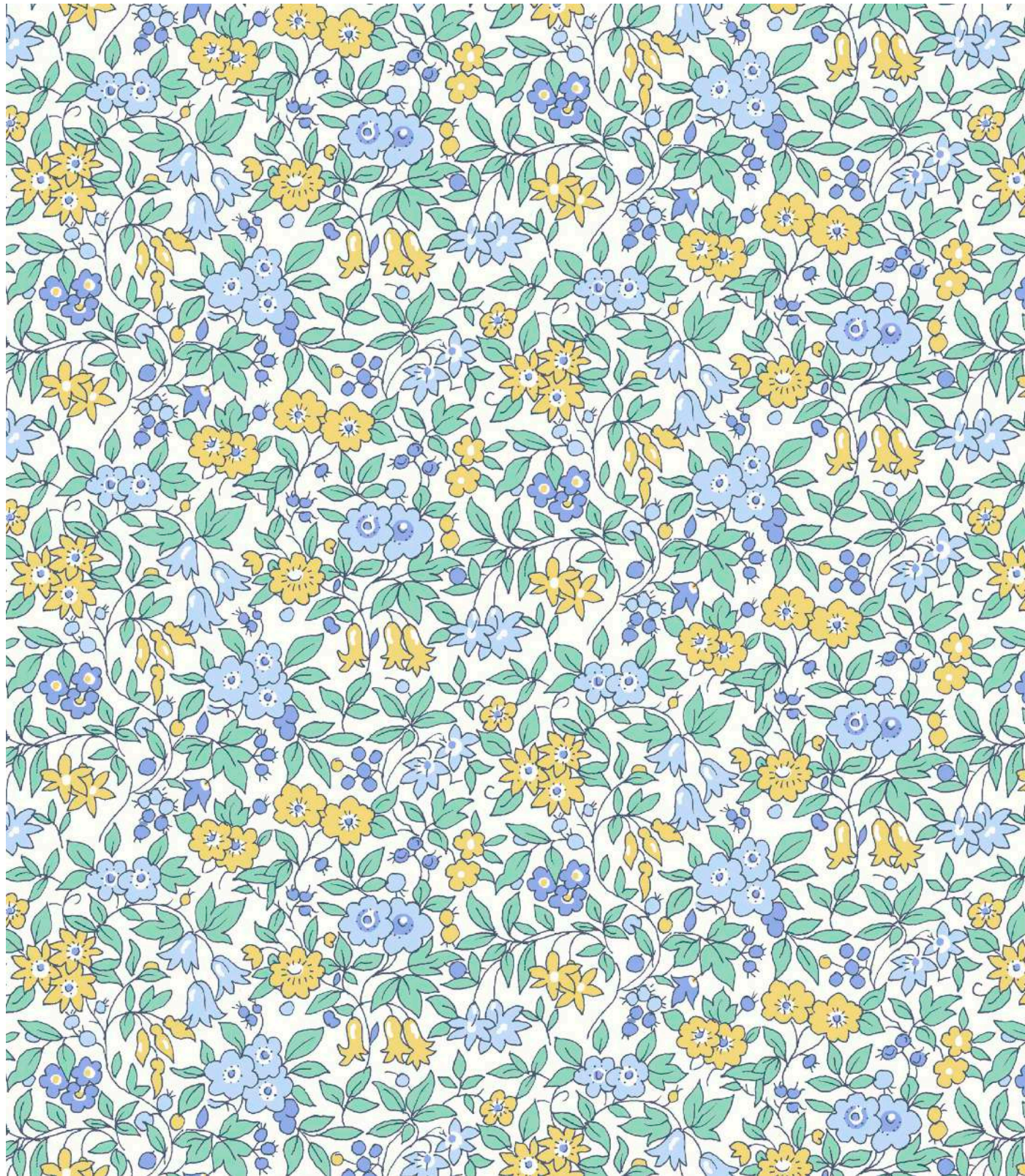


## EMILY SILHOUETTE

Based on design Emily which was created in 1989, Emily Silhouette flower is a monochrome version of the original. A variety of mixed flowers including daisies, marguerites, peonies and cornflowers were drawn in outline and arranged over a plain coloured ground.

Lasenby Cotton    Item Code. 04775719I    DC. 30377





## FORGET ME NOT BLOSSOM

Tiny berries and stylised flowers including forget-me-nots, daisies and bell flowers, create a dense trailing pattern. Forget Me Not Blossom is based on a 1950's design from the Liberty archive.

Lasenby Cotton Item Code. 04775727G DC. 30382

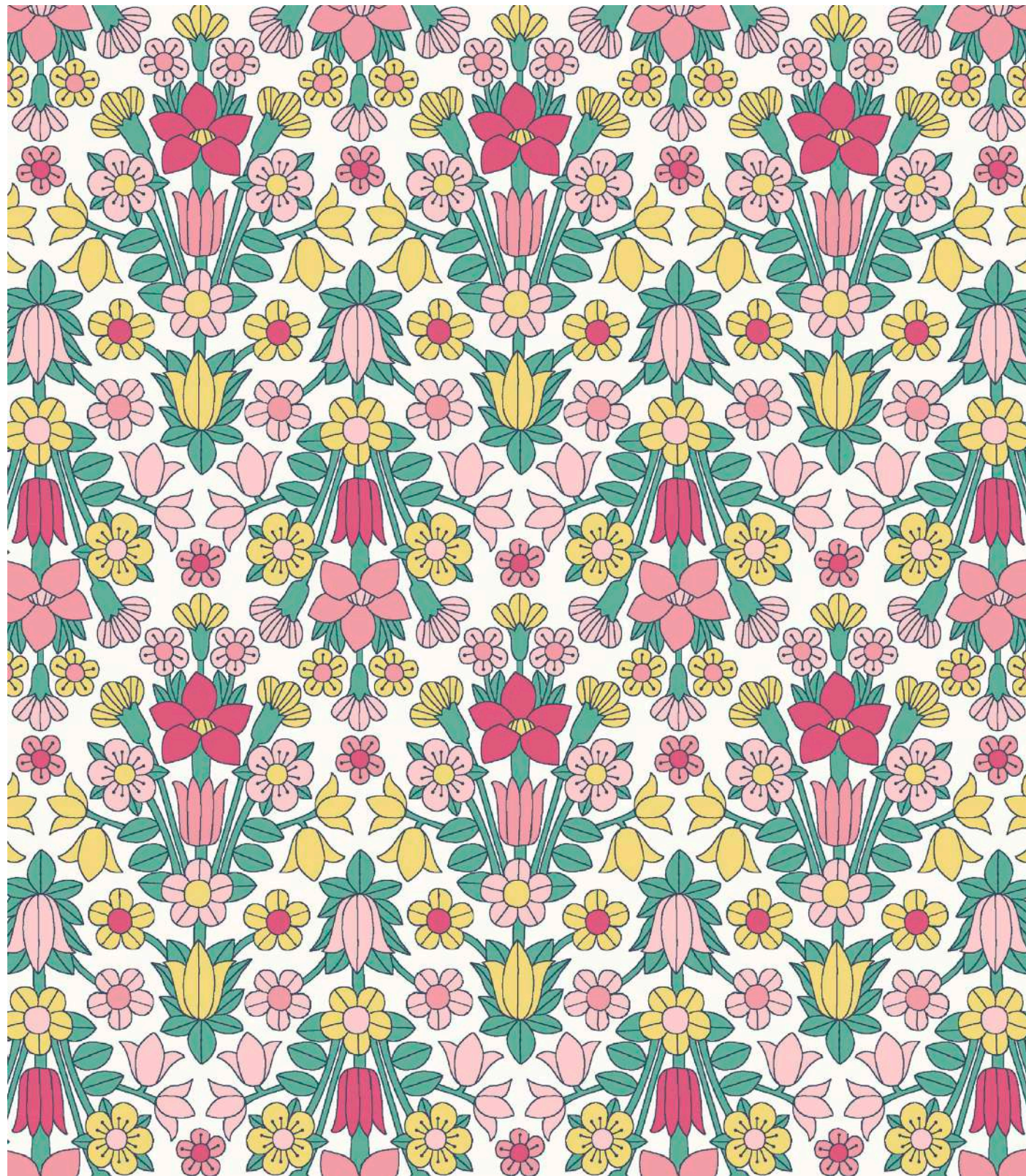


## EMILY FLOWER SILHOUETTE

Based on design Emily which was created in 1989, Emily Silhouette flower is a monochrome version of the original. A variety of mixed flowers including daisies, marguerites, peonies and cornflowers were drawn in outline and arranged over a plain coloured ground.

Lasenby Cotton Item Code. 04775719J DC. 30377





## HAMPSTEAD MEADOW

Taking inspiration from quintessential Arts & Crafts motifs, Hampstead Meadow is arranged in a mirrored layout, featuring symmetrical and elegant stylised flowers. Originally created for Liberty in 1964, this striking pattern has been redrawn and recoloured in a bold and playful palette.

Lasenby Cotton    Item Code. 04775964D    DC. 31430



## WILDFLOWER FIELD

Featuring a stunning botanical display of pinks, pansies, bell flowers, chrysanthemums and honeysuckle, this joyous pattern celebrates the beauty and diversity of simple flower forms. Based on a hand-painted artwork discovered in the Liberty archive, Wildflower Field is guaranteed to bring any crafting project into full bloom.

Lasenby Cotton    Item Code. 04775954C    DC. 31431





## ARLEY GARDEN

First created in 1966 and even included in our Liberty Classics collections during the early 1980's, Arley Gardens features a harmonious composition of block-coloured flowers, drawn with a very fine outline.

Lasenby Cotton Item Code.04775725G DC. 30379



## KENSINGTON GARDENS

Inspired by a hand-painted artwork from the Liberty archive, this wonderful directional print takes us on a walk around a wild garden of newly sprung flowers. Colourful sprigs of daisies, primroses and hyacinth create a welcoming botanical path, reminiscent of a sunlit meadow.

Lasenby Cotton Item Code. 04775963C DC. 31425

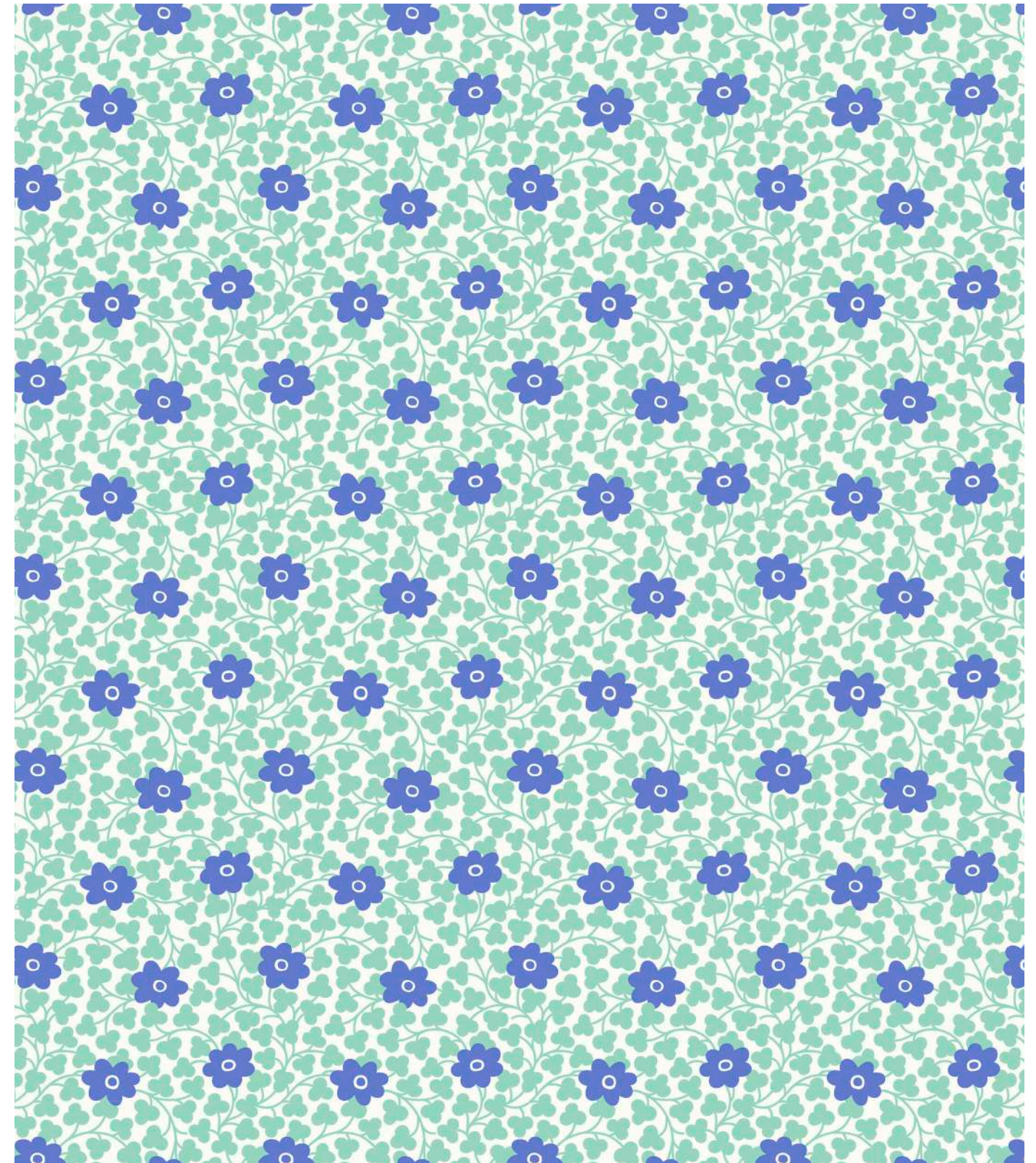




## MALVERN MEADOW

A beautiful array of spring flowers including daisies, dandelions, bell flowers and poppies among others, Malvern Meadow was redrawn and recoloured from a 1968 Liberty print.

Lasenby Cotton    Item Code. 04775726F    DC. 30378



## CHELSEA FLOWER

The original version of Chelsea Flower was created in the 1960's and printed at Liberty's Merton Printworks in 1965. This small and simplified pattern features a dense network of stylised leafy trails, emphasised by bold pops of circular flowers. When viewed from a distance, the flowers resemble spots, set over a textured ground.

Lasenby Cotton    Item Code. 04775955C    DC. 31428

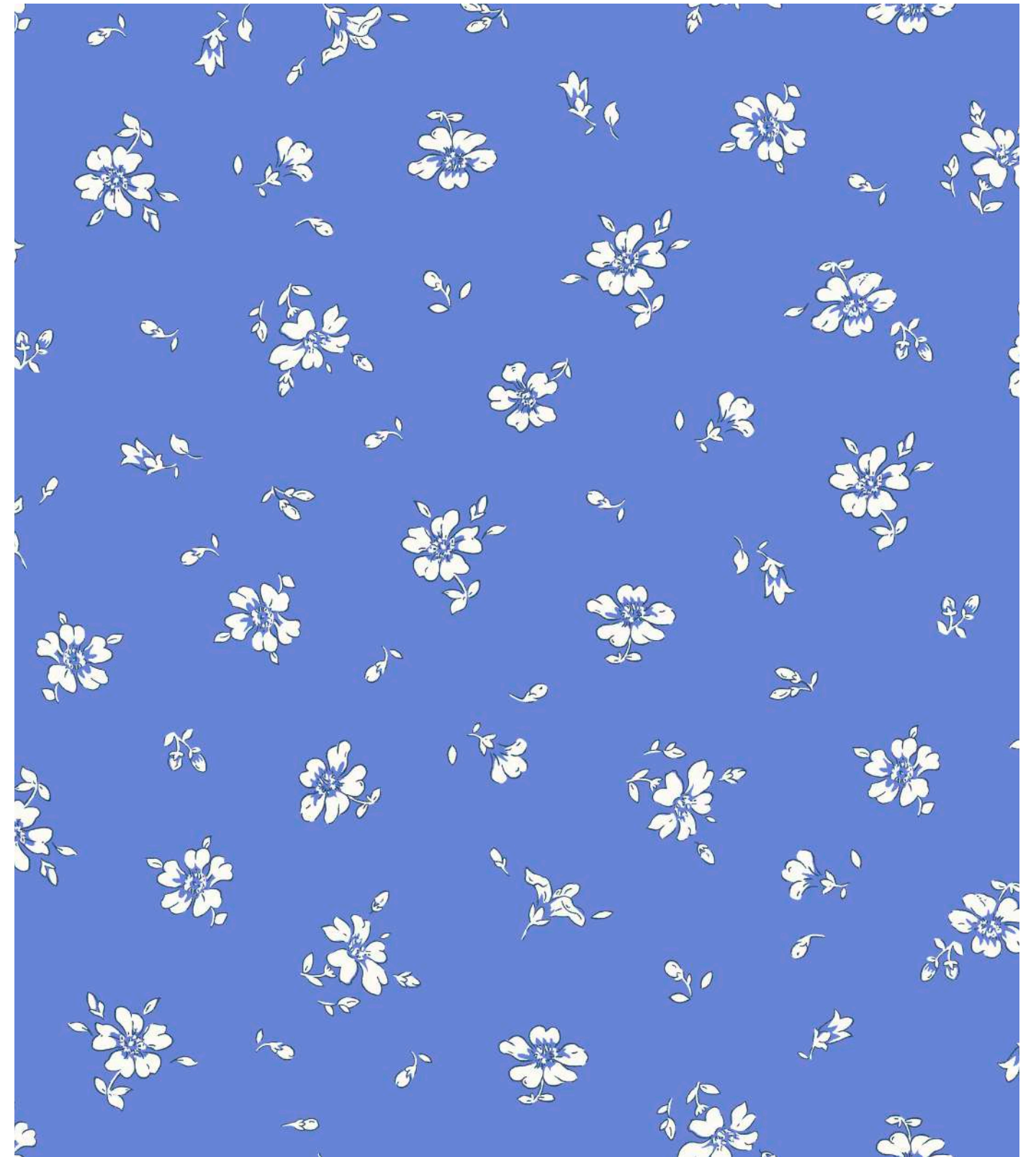




## MAMIE

A design created in 1980 but inspired by 1930's typical Liberty patterns. With its pretty fuchsias, roses and primroses, Mamie has proven to be a very popular design as it was part of the Classics for almost 2 decades throughout the 1980's and 1990's.

Lasenby Cotton    Item Code. 04775724F    DC. 22477

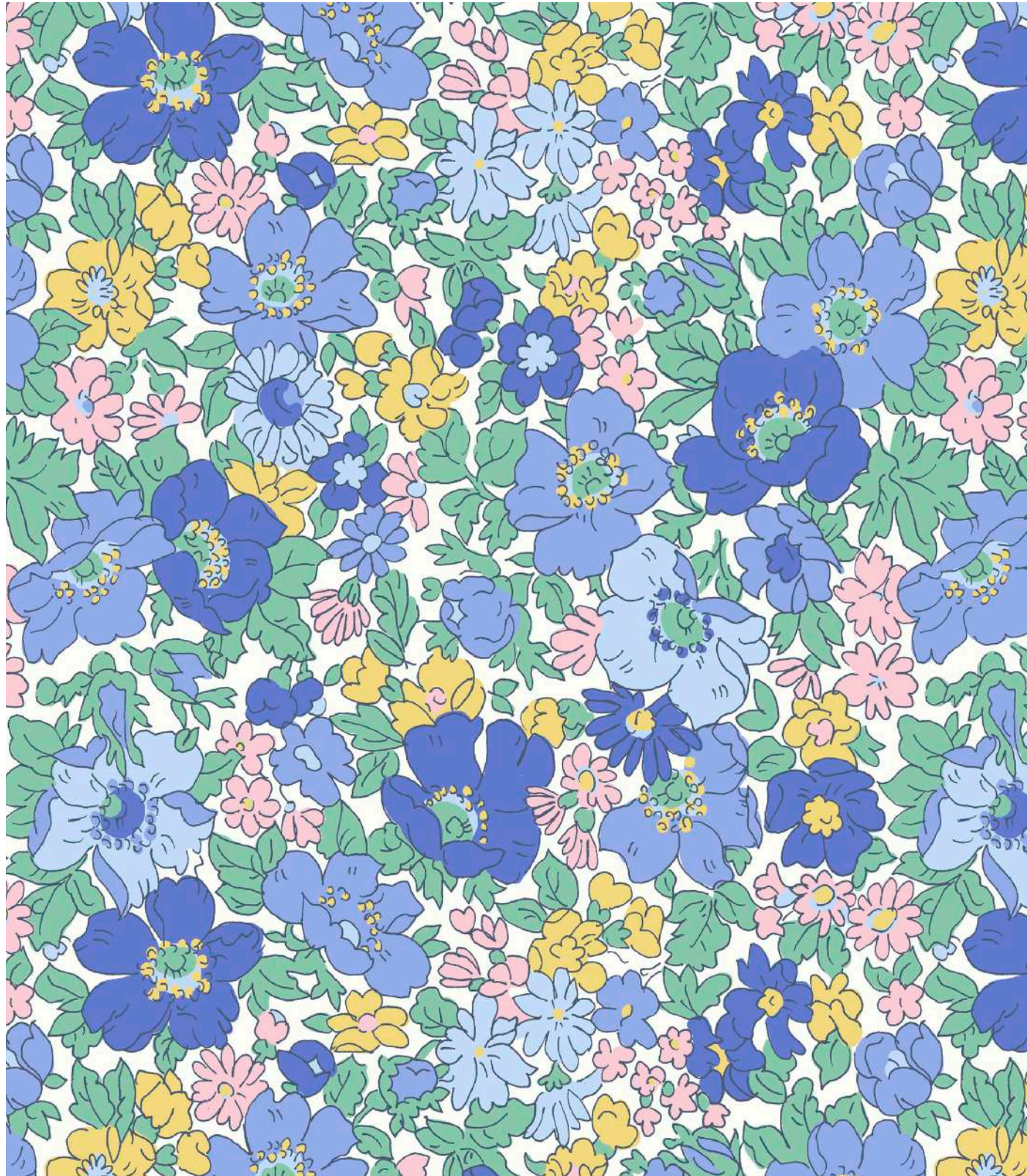


## FIELD ROSE

Inspired by a Liberty design originally created during the mid-1930s, this charming pattern features scattered delicate roses and tiny buds. An ideal quilting coordinate with lots of ground space, the outlined monochrome flowers offer a fresh and contemporary version of an archival pattern.

Lasenby Cotton    Item Code. 04775965D    DC. 31426





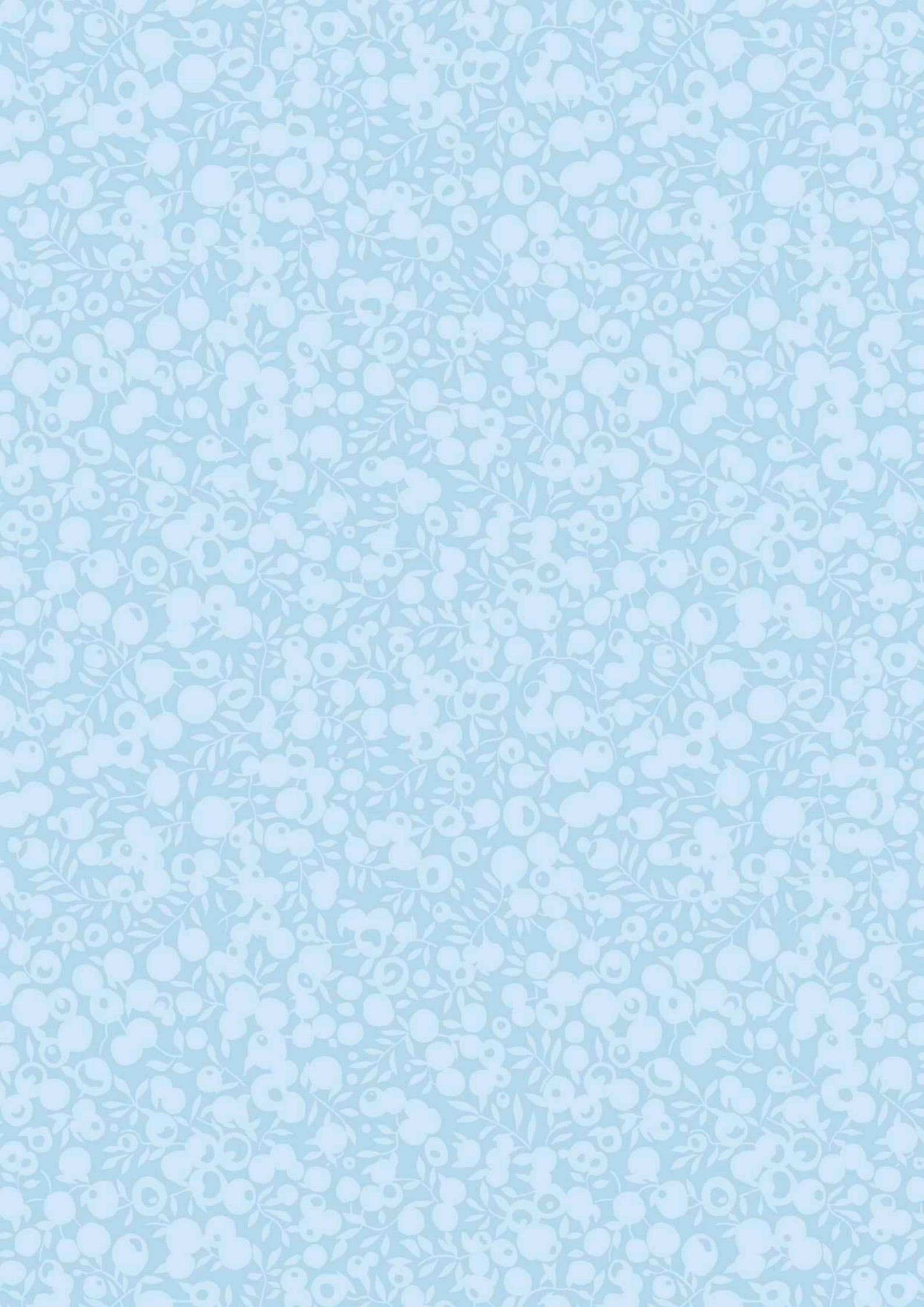
## COSMOS FLOWER

The original design for Cosmos Bloom was created during the 1930's and later reprinted in 1969 at Liberty's Merton Printworks. A very typical Liberty floral print, featuring small outlined anemones and daisies arranged over a dense leafy ground.

Lasenby Cotton    Item Code. 04775956C    DC. 31432







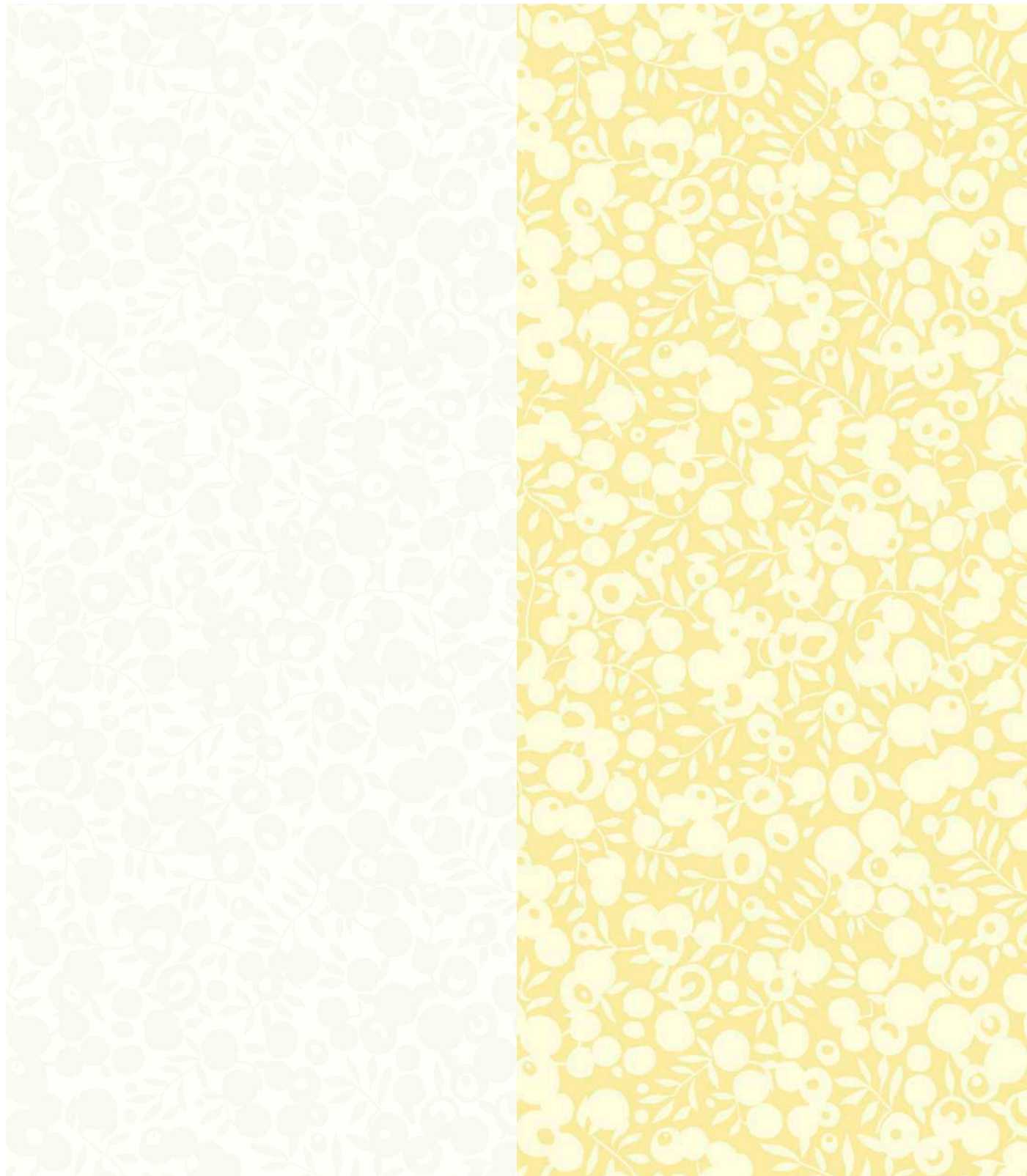
## RECOMMENDED WILTSHIRE SHADOW BLENDERS

The Liberty Fabrics design team have selected a favourite print to become the perfect blender for quilting. Originally designed for Liberty Fabrics in 1933, Wiltshire has been reimagined into a two-colour shadow silhouette to become the perfect fabric blender. The tonal leaf and berry print is available in a multitude of colourways, designed to coordinate with our vast archive of Liberty prints for a seamless mix-and-match effect.

Printed onto soft Lasenby cotton, this base is suited for craft projects and classic patchwork quilting, the possibilities are as endless as your imagination.

**LIBERTY.**  
FABRICS



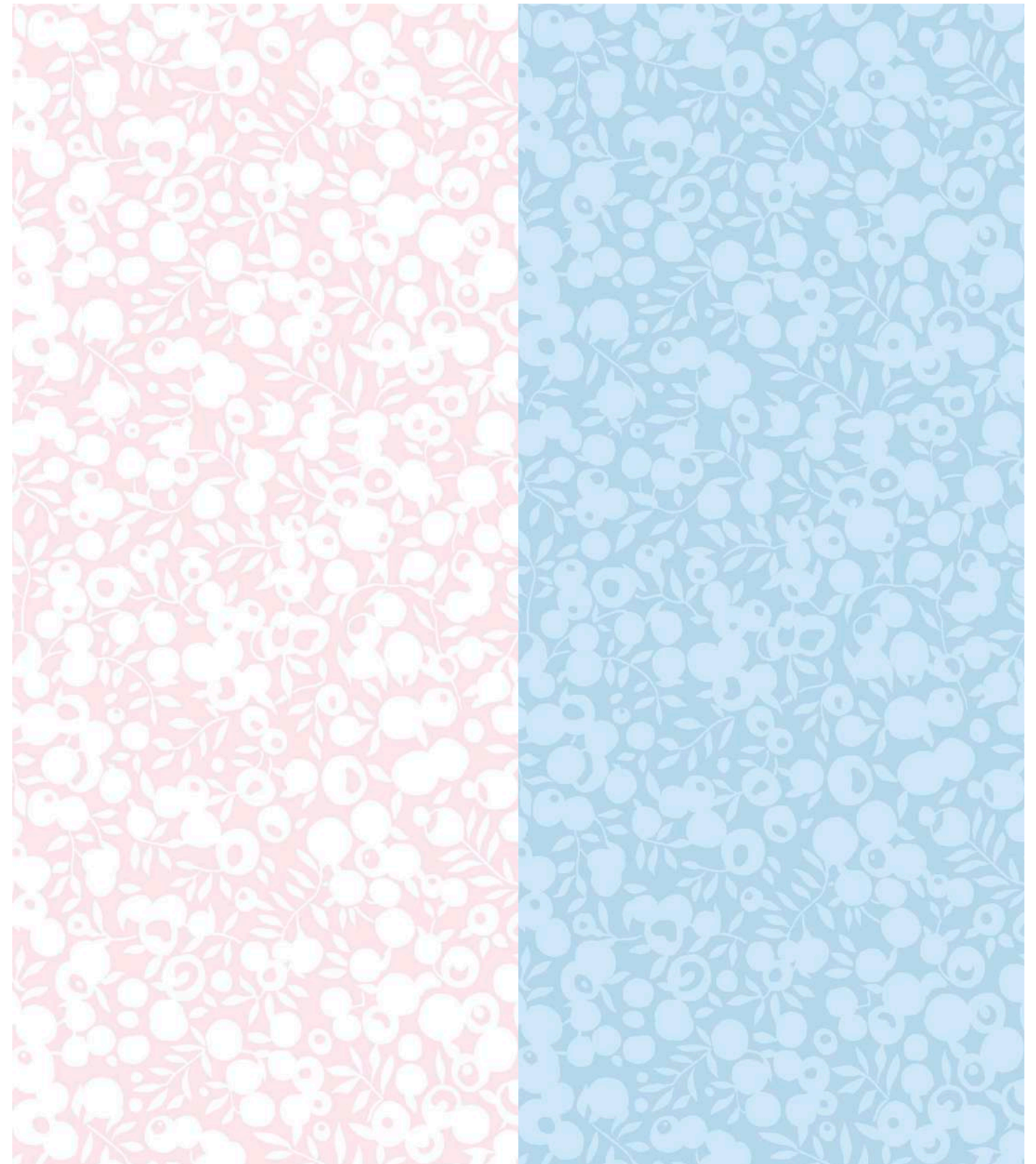


**WHITE**

Item Code. 04775715Z

**PRIMROSE**

Item Code. 04775679Z



**PETAL**

Item Code. 04775686Z

**ARCTIC**

Item Code. 04775700Z



# FLOWER SHOW SUNRISE PRE-CUT BUNDLES



0477FQ-SUNRISEA



0477FQ-SUNRISEB



0477FQ-SUNRISEC











FLOWER SHOW  
SUNRISE

**LIBERTY.**  
FABRICS