

*Celebrating Flower Fairies'  
100th Anniversary*

michael|miller FABRICS

# APRIL 2023 COLLECTIONS



**"ENCHANTED  
FOREST"**

BY PROJECT  
HOUSE 360



WBX10570  
BLUE

WBX10577  
LILAC

WBX10573  
BLUE

michael miller FABRICS

## CONTENTS:

- 03 - Flower Fairies of the Autumn
- 07 - Town Fair by Louise Nisbet
- 11 - A Painter's Palette
- 13 - Bright and Bold
- 17 - CoCo \*NEW COLORS\*
- 19 - Fashionista
- 23 - Jet Setter
- 27 - The Gilded Age by Aimee Stewart
- 31 - Woodland
- 35 - Botanical Garden by Aimee Stewart
- 39 - Midnight Forest by Belle & Boo Out to Play
- 43 - Ming Musings by Tina Higgins
- 47 - Parisian Cats
- 49 - Vintage Valentines
- 53 - Old Masters
- 57 - Black and White & Bright Allover
- 59 - Don't Hurry, Be Happy
- 63 - Flora Bella
- 67 - Sweet Indulgence
- 71 - Colorful Aquatic World by Melanie Mikecz
- 75 - Welcome to Our Lake

NEW!

108"

# WIDE BACKS

We're adding 3 new designs from the popular Opulent Floral collection to our Wideback selections! These beautiful, rich colors will make any projects a standout.

SHIPPING JUNE 2023

3 NEW SKUS



SCAN TO VIEW  
FULL WIDEBACK  
COLLECTION HERE

\*Images are not true to scale\*





— SHOP —  
michael miller FABRICS

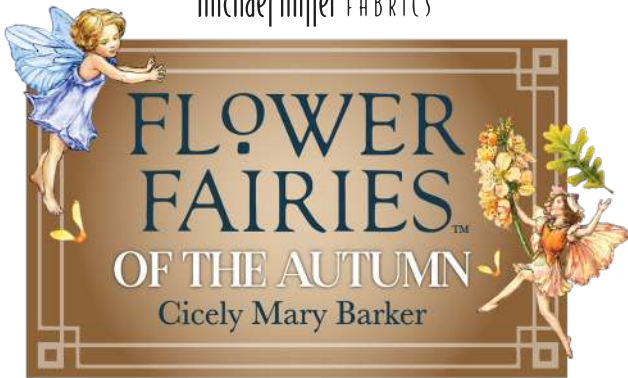
SCAN TO VIEW  
ALL BASICS



We're  
anything but  
*basic* and here  
for all your quilting  
fabric needs.

To place a wholesale order please visit us at  
[www.michaelmillerfabrics.com](http://www.michaelmillerfabrics.com) or E-mail us at  
[info@michaelmillerfabrics.com](mailto:info@michaelmillerfabrics.com)





SHIPPING AUGUST 2023

**14 NEW SKUS**



Flower Fairies is celebrating its 100th Anniversary and we're excited to commemorate this momentous occasion with a brand new collection. These fall fairies are sprinkled around a beautiful autumnal scene.

CAS0333 Flower Fairies of the Autumn 10 yds of full collection

CAS0334 Flower Fairies of the Autumn 15 yds of full collection

\*Not available for purchase by manufacturers



**SCAN TO ORDER  
FLOWER FAIRIES  
OF THE AUTUMN**







DDC11523 BLUE BELL  
AUTUMN FAIRY FLIGHT



DDC11523 SAGE  
AUTUMN FAIRY FLIGHT



DDC11524 CARAMEL  
FAIRY LEAVES



DDC11524 ROYAL  
FAIRY LEAVES



DDC11524 DARK GREEN  
FAIRY LEAVES



DDC11527 BLUE BELL  
AUTUMN FAIRY BORDER



DDC11527 SAGE  
AUTUMN FAIRY BORDER



DDC11528 SAFFRON  
SHADOW LEAVES



DDC11528 FERN  
SHADOW LEAVES



\*Images are not true to scale\*



DDC11525 SAFFRON  
AUTUMN FAIRY BLOOMS



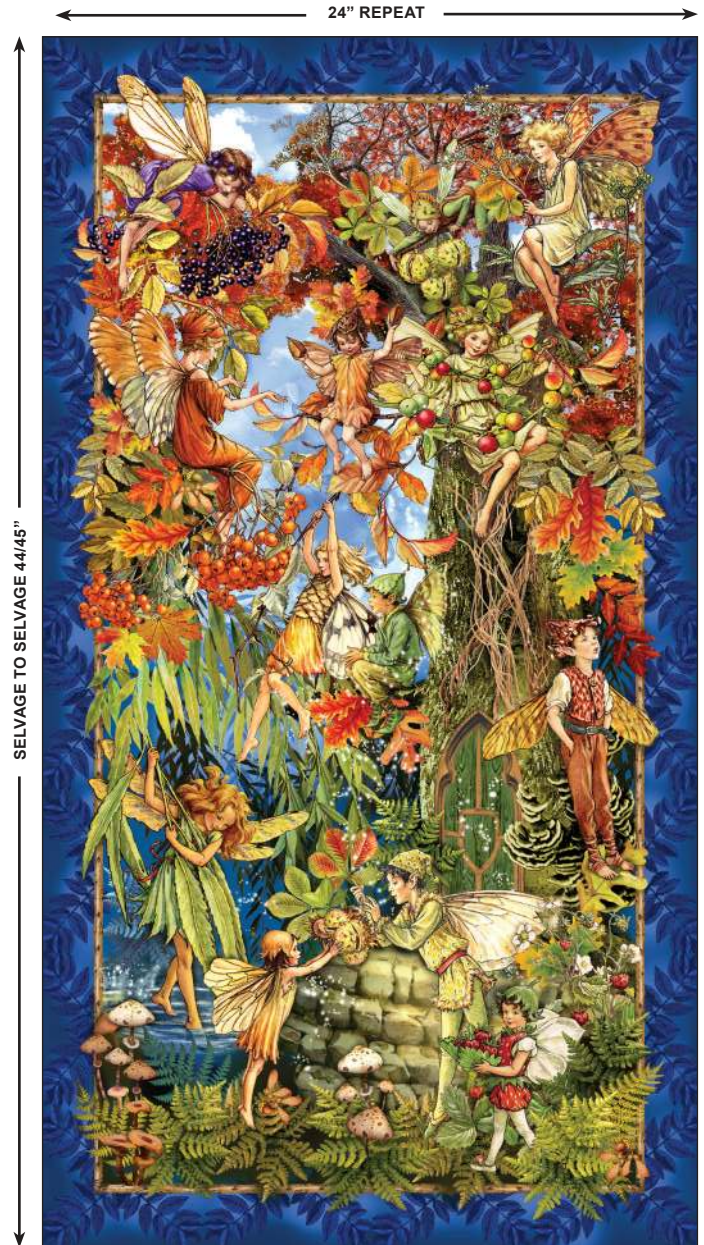
DDC11521 BLUE BELL  
BERRY FAIRY VIGNETTES



DDC11522 ROYAL  
VERY BERRY FAIRY



DDC11522 SAFFRON  
VERY BERRY FAIRY



DDC11526 FOREST  
FAIRY FOREST PANEL



# Enchanted Forest Quilt

by Project House 360

SIZE: 67"W X 87"H

LEVEL: CONFIDENT BEGINNER



SCAN FOR  
KITTING INFO



FREE PATTERN AVAILABLE AT [WWW.MICHAELMILLERFABRICS.COM](http://WWW.MICHAELMILLERFABRICS.COM)





**SCAN TO ORDER  
TOWN FAIR**

Put on your wellies and prepare for some wholesome family fun! From tractor rides to build a scarecrow, from sheep dog trials to pony rides, this is a feel good collection that encapsulates the warmth and whimsy of the 'Town Fair'. Marvel at the rare breed animals and tasty vegetables in our best in show competition. Sample the tasty carnival delights from our artisan food trucks, or treat yourself to some home made goodies from the baker's tent. There's something for everyone in this charming rural collection.

**SHIPPING AUGUST 2023**

**16 NEW SKUS**

CAS0335 Town Fair 10 yds of full collection

CAS0336 Town Fair 15 yds of full collection



DC11340 BLUE  
PRIZE ANIMALS



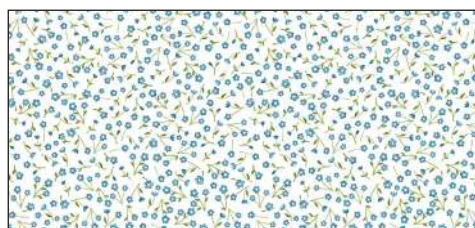
DC11340 CREAM  
PRIZE ANIMALS



DC11350 MULTI  
BEST IN SHOW



DC11410 GREEN  
MINI DAISY



DC11410 BLUE  
MINI DAISY



DC11341 GREEN  
DUCK HERDING



# Country Fair Quilt

by Natalie Crabtree of  
Crabtree Arts Collective

SIZE: 66"W X 74"H

LEVEL: BEGINNER



SCAN FOR  
KITTING INFO



FREE PATTERN AVAILABLE AT [WWW.MICHAELMILLERFABRICS.COM](http://WWW.MICHAELMILLERFABRICS.COM)





DC11342 BLUE  
FREE RANGE



DC11342 CREAM  
FREE RANGE



DC11349 CREAM  
JAM JARS



DC11343 CREAM  
TRACTORS



DC11345 BLUE  
WELLIES



DC11347 CREAM  
FAMILY FUN



DC11344 CREAM  
CARNIVAL FOOD



DC11351 MULTI  
COUNTY FAIR PLACEMATS



DC11346 BLUE  
PRIZE VEGGIES



DC11346 CREAM  
PRIZE VEGGIES



# Focus Pocus Quilt

by Swirly Girls Design

SIZE: 72"W X 92"H

LEVEL: CONFIDENT BEGINNER



SCAN FOR  
KITTING INFO



COMMERCIAL PATTERN AVAILABLE AT [WWW.SWIRLYGIRLSDESIGN.COM](http://WWW.SWIRLYGIRLSDESIGN.COM) & CHECKER DISTRIBUTORS



michael | miller FABRICS

\*Images are not true to scale\*

# A Painter's Palette



SCAN TO ORDER  
A PAINTER'S PALETTE

Soft blues, grays, and beige make up this painted style collection. The defined brush strokes and blended designs make the fabric look like it's been hand painted. This 15 piece collection comes together to make a beautiful calming quilt.

SHIPPING SEPTEMBER 2023

15 NEW SKUS

CAS0365 A Painter's Palette 10 yds of full collection  
CAS0366 A Painter's Palette 15 yds of full collection

SCAN FOR  
KITTING INFO



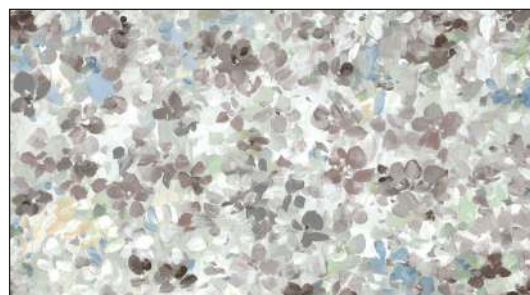
**Tribeca Quilt**  
by Kate Colleran Designs, LLC  
SIZE: 62"W X 74"H  
LEVEL: ADVANCED BEGINNER



COMMERCIAL PATTERN AVAILABLE AT  
[WWW.SHOP.KATECOLLERANDESIGNS.COM](http://WWW.SHOP.KATECOLLERANDESIGNS.COM)



DCX11160 BLUE  
ROYAL ROSES



DCX11161 GRAY  
SCATTERED FLOWERS



DCX11161 BLUE  
SCATTERED FLOWERS





DCX11162 BLUE  
LUMINOUS LANDSCAPE



DCX11165 BEIGE  
FLOWER CLUSTERS



DCX11165 BLUE  
FLOWER CLUSTERS



CX11166 WHITE  
WISPY



DCX11167 AQUA  
MIXED MEDIA



DCX11167 BEIGE  
MIXED MEDIA



DCX11167 GRAY  
MIXED MEDIA



DCX11167 BLUE  
MIXED MEDIA



DCX11163 BLUE  
PAINTERLY LINES



DCX11164 BEIGE  
FALLING PETALS



DCX11164 BLUE  
FALLING PETALS



DCX11164 CLOUD  
FALLING PETALS





# BRIGHT AND BOLD



SCAN TO ORDER  
BRIGHT AND BOLD

Just as the name says, this collection is truly bright and bold. The hand drawn florals combine with geometric prints, dots, and stripes to create a wonderful world of color.

SHIPPING SEPTEMBER 2023

CAS0367 Bright and Bold 10 yds of full collection  
CAS0368 Bright and Bold 15 yds of full collection

15 NEW SKUS







CX11290 BLACK  
BRIGHT BLOOMS



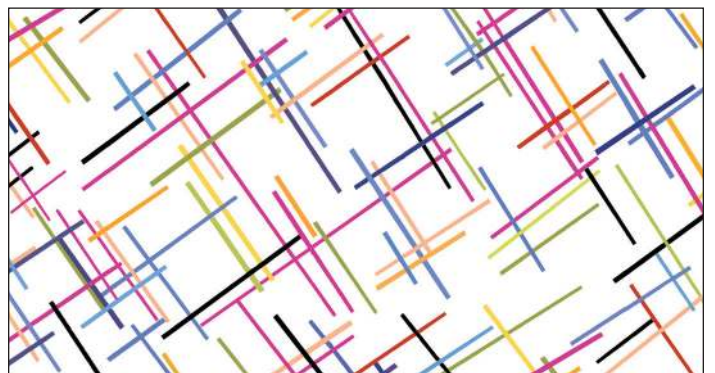
CX11292 MULTI  
ON THE GRID



CX11290 BLUE  
BRIGHT BLOOMS



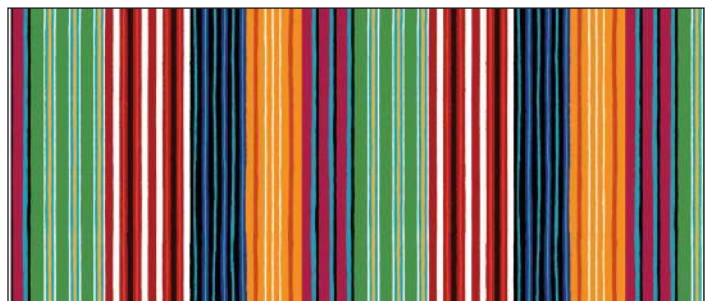
CX11294 BLACK  
PICKUP STICKS



CX11294 WHITE  
PICKUP STICKS



CX11290 WHITE  
BRIGHT BLOOMS



CX11293 MULTI  
PINSTRIPES

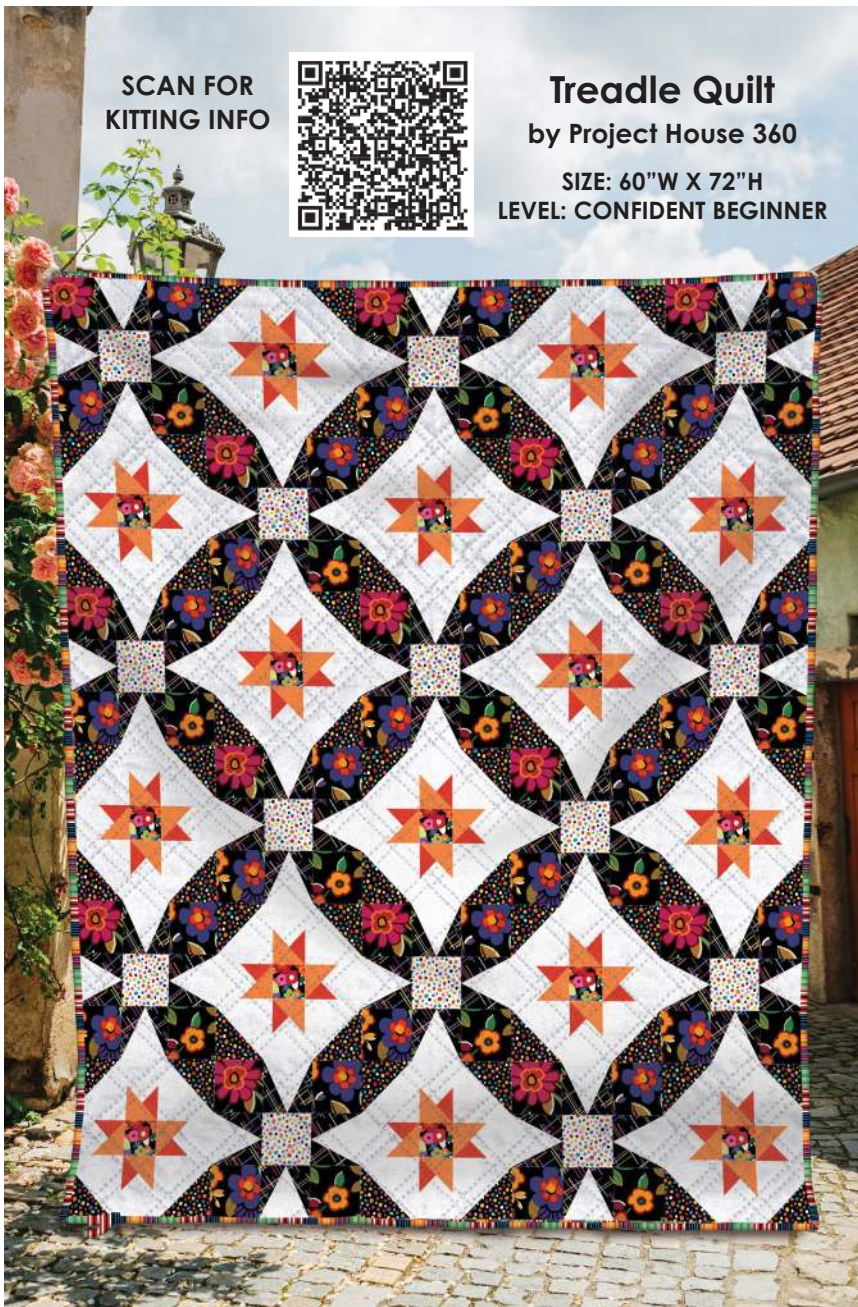




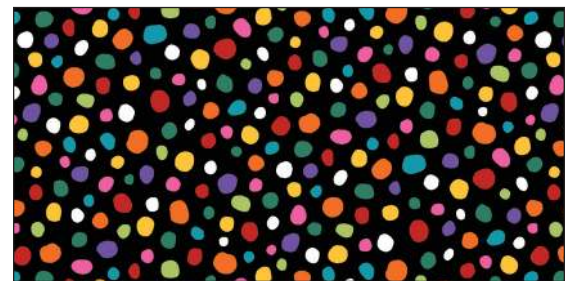
CX11291 BLACK  
JEWEL BOX FLOWERS



CX11291 WHITE  
JEWEL BOX FLOWERS



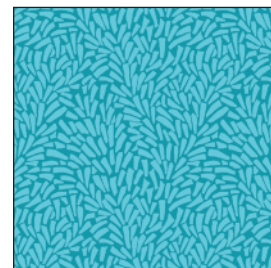
FREE PATTERN AVAILABLE AT [WWW.MICHAELMILLERFABRICS.COM](http://WWW.MICHAELMILLERFABRICS.COM)



CX11295 BLACK  
CITY LIGHTS



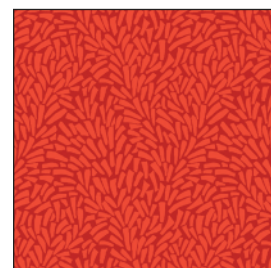
CX11295 WHITE  
CITY LIGHTS



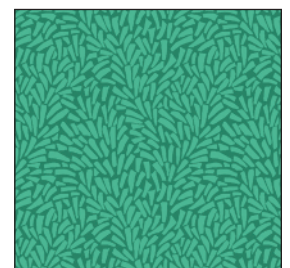
CX11296 BLUE  
FRONDS



CX11296 ORANGE  
FRONDS



CX11296 RED  
FRONDS



CX11296 GREEN  
FRONDS



# Gardens at the Crossroads Quilt

by Heidi Pridemore

SIZE: 49"W X 61"H | LEVEL: ADVANCED BEGINNER



SCAN FOR  
KITTING INFO



COMMERCIAL PATTERN AVAILABLE AT [WWW.THEWHIMSICALWORKSHOP.COM](http://WWW.THEWHIMSICALWORKSHOP.COM),  
CHECKER DISTRIBUTORS & EE SCHENCK

MICHAEL MILLER FABRICS' APRIL 2023 RELEASE



michael miller FABRICS

*Coco*

NEW  
COLORS!

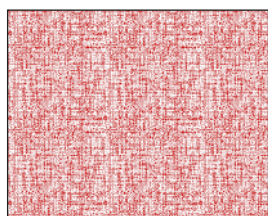


SCAN TO VIEW  
FULL COCO  
COLLECTION HERE

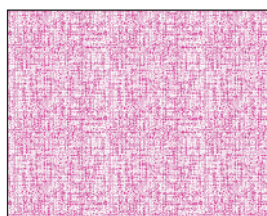
SHIPPING SEPTEMBER 2023

**25 NEW SKUS**

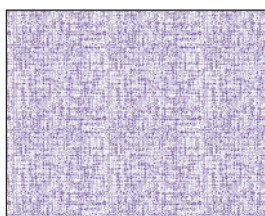
The Coco party continues with 25 new colors! We've added 3 new ombre color stories as well as a 10 colors on a white ground to bring a new look to the line. We can't wait to see what you create with these stunning colors.



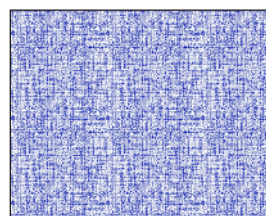
CX9316 RED



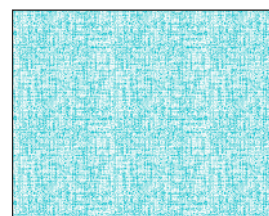
CX9316 POMEGRANATE



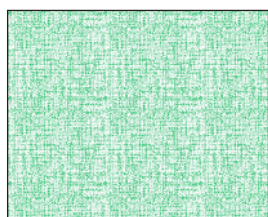
CX9316 CROCUS



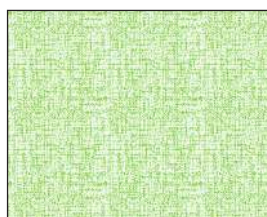
CX9316 BLUE



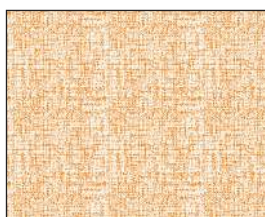
CX9316 MALIBU



CX9316 LEAF



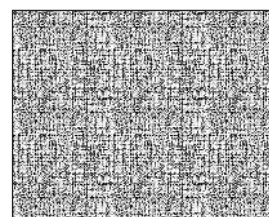
CX9316 KIWI



CX9316 MELON



CX9316 YELLOW



CX9316 METAL



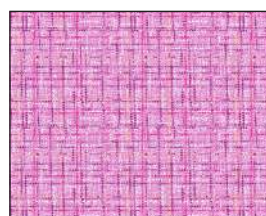
CX9316 SANGRIA



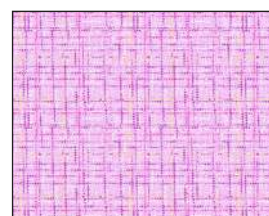
CX9316 PUNCH



CX9316 PERIWINKLE



CX9316 PEONY



CX9316 AZALEA



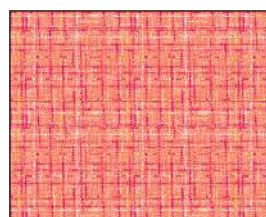
CX9316 CURRANT



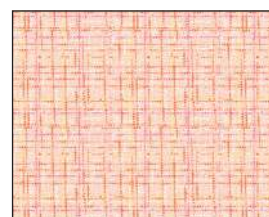
CX9316 CRANBERRY



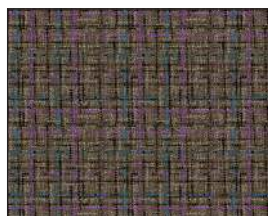
CX9316 GARNET



CX9316 AMBER



CX9316 ICING



CX9316 AULAIT



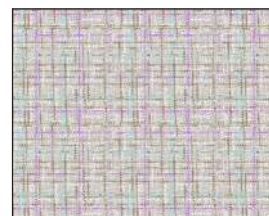
CX9316 BISQUE



CX9316 CASHMERE



CX9316 COCOA



CX9316 ALABASTER



michael miller FABRICS

# CoCo





michael miller FABRICS



SHIPPING SEPTEMBER 2023

15 NEW SKUS



SCAN TO ORDER  
FASHIONISTA

Glamorous and fabulous! Fashionista brings all the style. This posh collection features makeup, accessories, and women strutting their fits. These prints coordinate seamlessly to create a beautiful quilt for all those fashion lovers.

CAS0363 Fashionista 10 yds of full collection

CAS0364 Fashionista 15 yds of full collection







CX11449 CREAM  
FASHIONISTA DIARY



CX11450 MULTI  
FASHIONISTA ARGYLE



CX11449 MINT  
FASHIONISTA DIARY



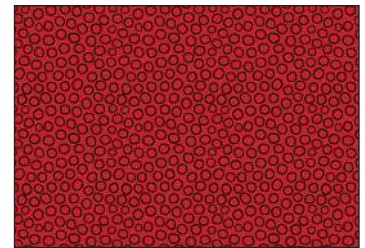
CX11453 MULTI  
FASHIONISTA STRIPE



CX11449 ROSE  
FASHIONISTA DIARY



CX11455 BLACK  
FASHIONISTA RINGS



CX11455 RED  
FASHIONISTA RINGS



CX11452 CREAM  
FASHIONISTA DOODADS



CX11452 GRAY  
FASHIONISTA DOODADS



CX11452 MINT  
FASHIONISTA DOODADS





CX11451 BLACK  
FASHIONISTA PLEASURES



CX11451 PINK  
FASHIONISTA PLEASURES



CX11454 CREAM  
FASHIONISTA NOTES



CX11454 GRAY  
FASHIONISTA NOTES



CX11454 PINK  
FASHIONISTA NOTES

SCAN FOR  
KITTING INFO



**Portable Pockets**  
by Around The Bobbin  
LEVEL: INTERMEDIATE

LARGE  
6" W X 8" L

MEDIUM  
5" W X 6" L

SMALL  
4" W X 5" L



COMMERCIAL PATTERN AVAILABLE AT  
[WWW.AROUNDTHEBOBBIN.COM](http://WWW.AROUNDTHEBOBBIN.COM),  
CHECKER DISTRIBUTORS, BREWER & EE SCHENCK

ACTUAL SIZE



# Retro Chic Quilt

by Marsha Evans Moore

SIZE: 36 1/2"W X 46"H

LEVEL: INTERMEDIATE



SCAN FOR  
KITTING INFO



FREE PATTERN AVAILABLE AT [WWW.MICHAELMILLERFABRICS.COM](http://WWW.MICHAELMILLERFABRICS.COM)





SCAN TO ORDER  
JET SETTER

With teal, blue and purple color palette, this modern collection will spark your creativity. The designs will make you feel like you're looking into a kaleidoscope.

CAS0371 Jet Setter 10 yds of full collection

CAS0372 Jet Setter 15 yds of full collection

SHIPPING SEPTEMBER 2023

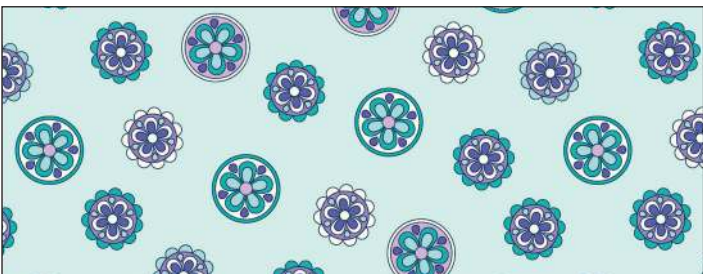
## 12 NEW SKUS



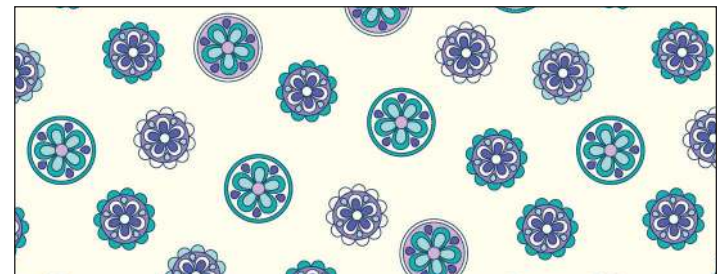
CX11420 COBALT  
MODERN MONTAGE



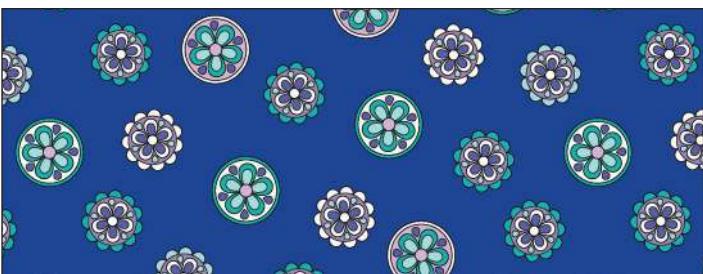
CX11420 TEAL  
MODERN MONTAGE



CX11425 BLUE  
DAZZLING FLOWERS



CX11425 CREAM  
DAZZLING FLOWERS

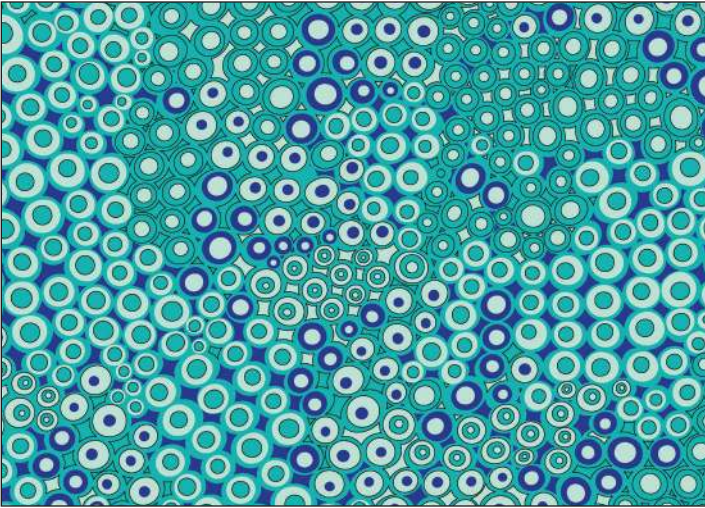


CX11425 COBALT  
DAZZLING FLOWERS

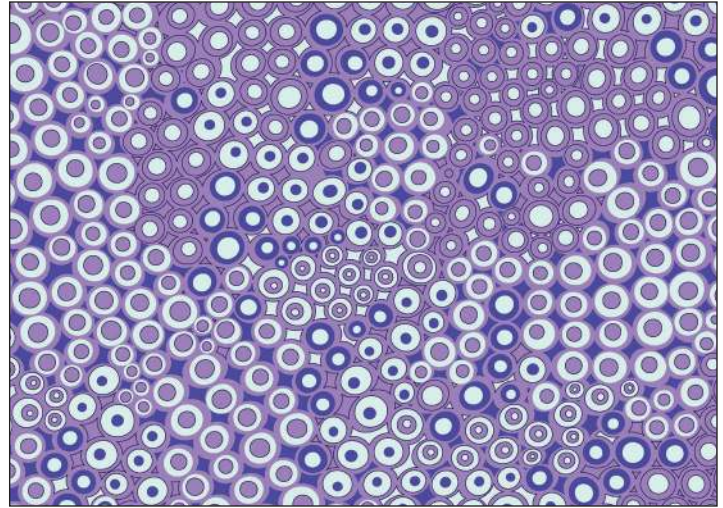


CX11425 LILAC  
DAZZLING FLOWERS





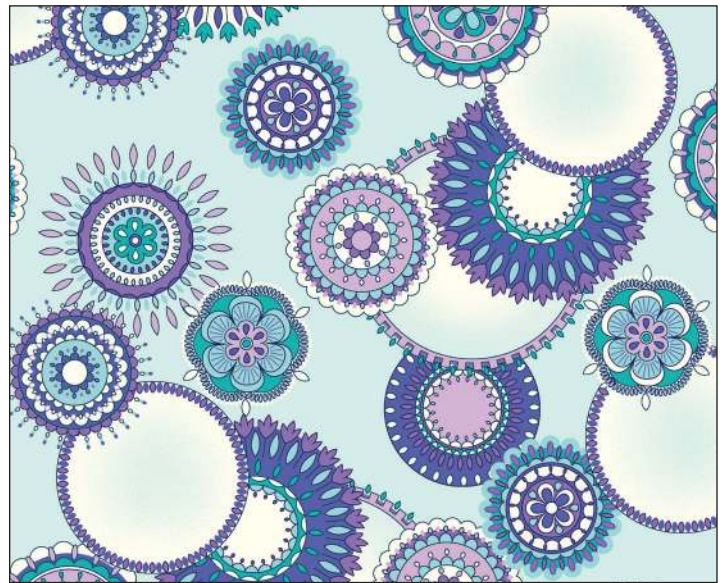
CX11424 TEAL  
CAPRI DOTS



CX11424 PURPLE  
CAPRI DOTS



CX11422 COBALT  
PAISLEY PASTICHE



CX11421 BLUE  
CHIC CIRCLES



CX11423 MULTI  
SWIRLED KALEIDOSCOPE



CX11421 COBALT  
CHIC CIRCLES



# Peacock Garden Quilt

by Heidi Pridemore

SIZE: 50"W X 65 1/2"H

LEVEL: ADVANCED BEGINNER



SCAN FOR  
KITTING INFO



COMMERCIAL PATTERN AVAILABLE AT [WWW.THEWHIMSICALWORKSHOP.COM](http://WWW.THEWHIMSICALWORKSHOP.COM),  
CHECKER DISTRIBUTORS & EE SCHENCK



# Wonky Flowers Quilt

by Siobhan for CDM365 Studios

SIZE: 75"W X 75"H

LEVEL: BEGINNER



SCAN FOR  
KITTING INFO



FREE PATTERN AVAILABLE AT [WWW.MICHAELMILLERFABRICS.COM](http://WWW.MICHAELMILLERFABRICS.COM)





SCAN TO ORDER  
THE GILDED AGE

\*Images are not true to scale\*

Known as a time of opulence and excess, the Gilded Age flaunted the world's most sumptuous silks, velvets, satins and lace, accentuated by exotic feathers and jewels from around the world. Cosmetics were a work of art, housed in ornate compacts that had as much flare as the women who owned them. Corsets, bustles, ruffled trains and silk gloves were a must, as were the parasols that kept pale complexions safe. Aimee's love of antique ephemera and history helped her curate this collection with an eye for capturing the lush detail and artistry that was everyday life for those who lived in the Gilded Age.

michael|miller FABRICS



CAS0369 The Gilded Age 10 yds of full collection  
CAS0370 The Gilded Age 15 yds of full collection

SHIPPING SEPTEMBER 2023

16 NEW SKUS







DDC11309 MULTI  
GILDED GLAMOUR



DDC11311 BLUE  
ORNATE COMPACTS



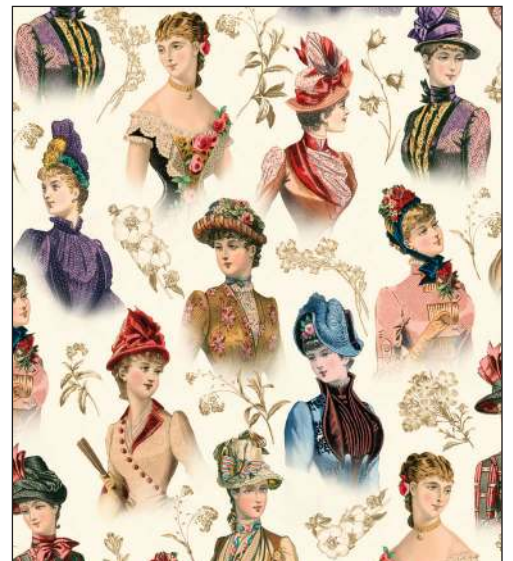
DDC11310 BLACK  
VINTAGE PERFUMES



DDC11310 CREAM  
VINTAGE PERFUMES



DDC11313 MULTI  
VINTAGE FASHION



DDC11312 MULTI  
BONNET HATS





DDC11314 BLACK  
VINTAGE FANS



DDC11314 CREAM  
VINTAGE FANS



DDC11315 BLING  
BEAUTY ADS



DDC11315 MULTI  
BEAUTY ADS



DDC11316 BLUE  
GILDED GLOVES



DDC11316 BLACK  
GILDED GLOVES



DDC11318 BLUE  
VELVET



DDC11317 CREAM  
GILDED FEATHERS



DDC11317 BLUE  
GILDED FEATHERS



DDC11318 RED  
VELVET



# Courtyard Quilt

by Everyday Stitches

SIZE: 64"W X 85"H

LEVEL: INTERMEDIATE



SCAN FOR  
KITTING INFO



COMMERCIAL PATTERN AVAILABLE AT [WWW.EVERYDAYSTITCHES.COM](http://WWW.EVERYDAYSTITCHES.COM) & CHECKER DISTRIBUTORS



michael miller FABRICS



SCAN TO ORDER  
WOODLAND

Time to explore the woods! Surround yourself with trees and wildlife. Bunnies and bears and all kinds of animals are waiting for you. Makes a beautiful cabin quilt or wall hanging for a nature lover.

SHIPPING SEPTEMBER 2023

CAS0361 Woodland 10 yds of full collection

CAS0362 Woodland 15 yds of full collection

15 NEW SKUS



CX11365 AQUA  
WOODLAND CREATURES



CX11365 CHOCOLATE  
WOODLAND CREATURES



CX11364 CREAM  
WOODLAND



CX11366 CREAM  
EXPLORE WOODLAND



CX11366 LIGHT AQUA  
EXPLORE WOODLAND



CX11370 MULTI  
FOREST STRIPE





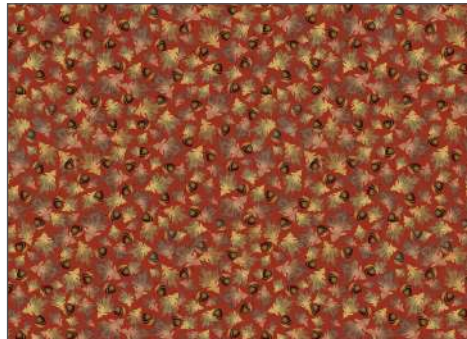
CX11367 AQUA  
PINE FOREST



CX11367 CREAM  
PINE FOREST



CX11368 CHOCOLATE  
LEAVES & ACORNS



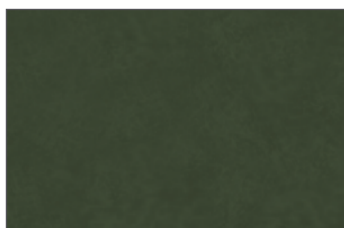
CX11368 RUST  
LEAVES & ACORNS



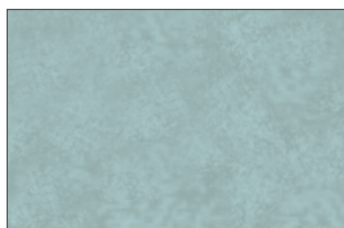
CX11368 TEAL  
LEAVES & ACORNS



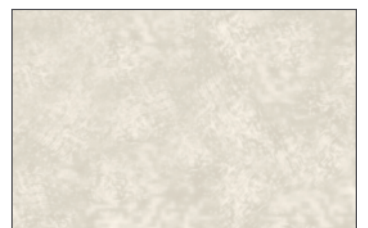
CX11369 RUST  
WOODLAND TEXTURE



CX11369 OLIVE  
WOODLAND TEXTURE



CX11369 LIGHT AQUA  
WOODLAND TEXTURE



CX11369 CREAM  
WOODLAND TEXTURE



# Tenfold Quilt

by Swirly Girls Design

SIZE: 58"W X 70"H

LEVEL: CONFIDENT BEGINNER



SCAN FOR  
KITTING INFO



COMMERCIAL PATTERN AVAILABLE AT [WWW.SWIRLYGIRLSDESIGN.COM](http://WWW.SWIRLYGIRLSDESIGN.COM) & CHECKER DISTRIBUTORS



# Sailing Quilt

by Siobhan for CDM365 Studios

SIZE: 72"W X 72"H

LEVEL: CONFIDENT BEGINNER



SCAN FOR  
KITTING INFO



COMMERCIAL PATTERN AVAILABLE AT [WWW.CDM365STUDIOS.COM](http://WWW.CDM365STUDIOS.COM)





michael|miller FABRICS



# BOTANICAL GARDEN

by Aimee Stewart

CAS0357 Botanical Garden 10 yds of full collection  
CAS0358 Botanical Garden 15 yds of full collection



SCAN TO ORDER  
BOTANICAL GARDEN

In this lavishly curated garden, the blooms and butterflies provide vibrant color and beauty on a perfect blue sky day. Flowering vines, fragrant roses, honeysuckle and forget-me-nots all dance together to the waltz of Summer's happy hum. Aimee invites you to find a cozy place to sit and relax, and let the balmy delights of this botanical garden lull you into a sweet afternoon reverie.

SHIPPING OCTOBER 2023

**16 NEW SKUS**







DDC11466 BLACK  
BEAUTIFUL BLOOMS



DDC11467 BREEZE  
GARDEN FRESH



DDC11466 SKY  
BEAUTIFUL BLOOMS



DDC11467 IRIS  
GARDEN FRESH



DDC11466 WHITE  
BEAUTIFUL BLOOMS



DDC11472 SKY  
GARDEN FIELDS



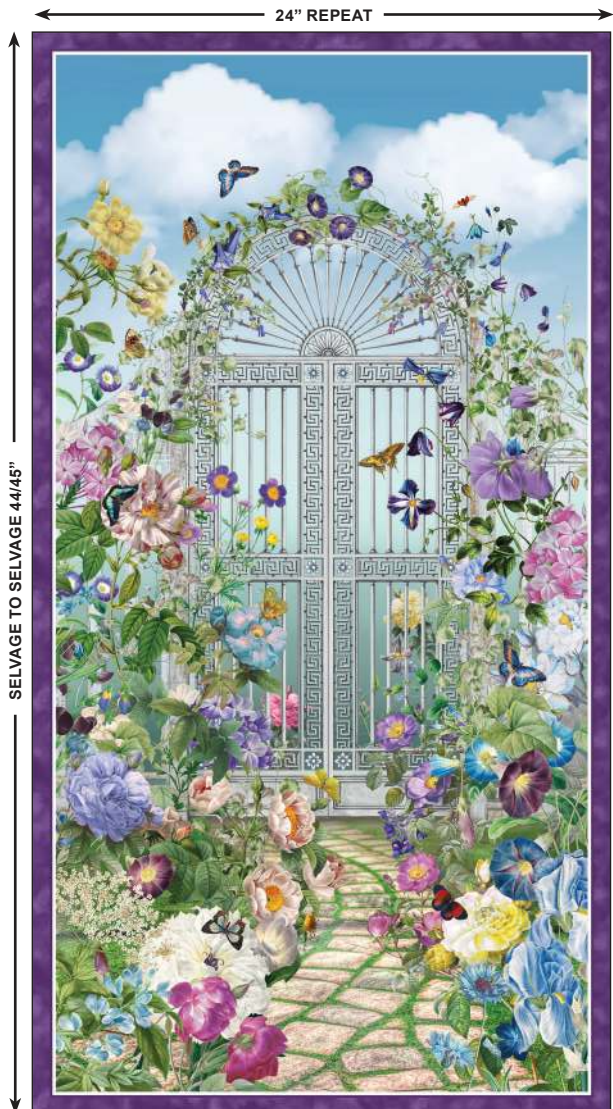
DDC11468 BLACK  
WILD FOLIAGE



DDC11468 BREEZE  
WILD FOLIAGE



\*Images are not true to scale\*



DDC11474 MULTI  
GATEWAY PANEL



DDC11471 MULTI  
FLORAL BORDER



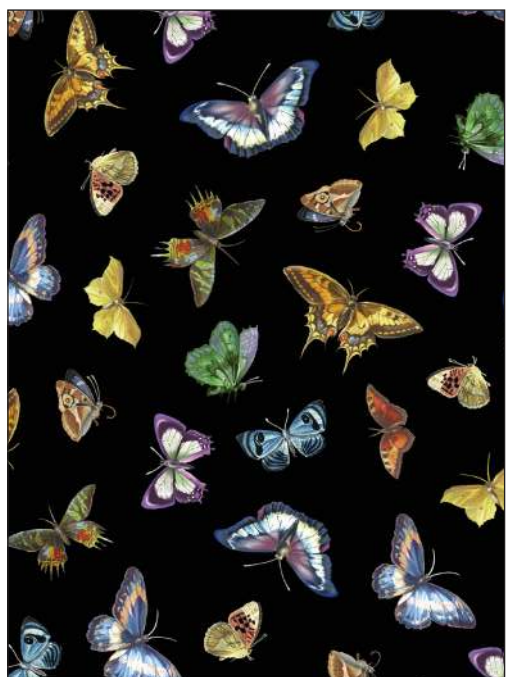
DC11469 ALOE  
SHADOW DANCE



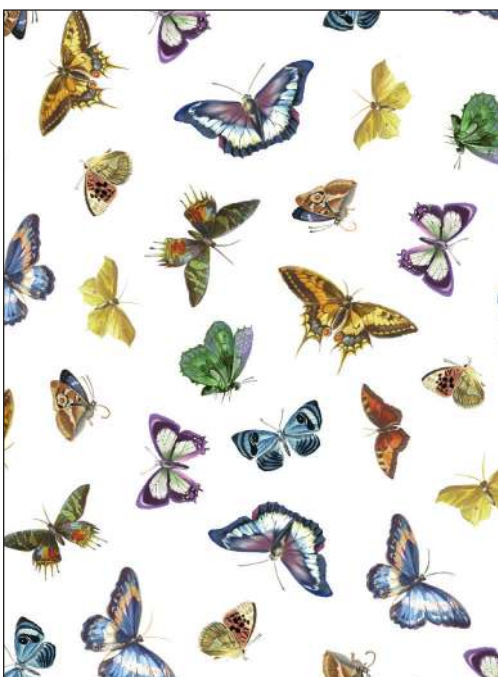
DC11469 BREEZE  
SHADOW DANCE



DC11469 JAM  
SHADOW DANCE



DC11473 BLACK  
BRIGHT BUTTERFLIES



DC11473 WHITE  
BRIGHT BUTTERFLIES



DC11469 SLATE  
SHADOW DANCE



# Garden Path Quilt

by Marsha Evans Moore

SIZE: 45"W X 60"H

LEVEL: ADVANCED BEGINNER



SCAN FOR  
KITTING INFO



FREE PATTERN AVAILABLE AT [WWW.MICHAELMILLERFABRICS.COM](http://WWW.MICHAELMILLERFABRICS.COM)





**SCAN TO ORDER  
MIDNIGHT FOREST**

Belle & Boo's latest fabric collection, The Midnight Forest, has been inspired by nature — the allure of rambling walks hoping to glance a shy woodland animal, and the magic of childhood spent in the forest with your friends.

It's also a celebration of the beauty and diversity of ancient British woodlands, and aims to encourage the next generation of children to delight in the wild wonders of these spaces, and preserve them for their future.

**SHIPPING OCTOBER 2023**

CAS0353 Midnight Forest 10 yds of full collection  
CAS0354 Midnight Forest 15 yds of full collection

**16 NEW SKUS**



DC11372 NAVY  
FOREST ADVENTURE



DC11372 WHITE  
FOREST ADVENTURE



DC11372 SPRUCE  
FOREST ADVENTURE



DC11374 WHITE  
FOREST PLAY



DC11374 SPRUCE  
FOREST PLAY



DC11376 WHITE  
MUSHROOM FLORAL



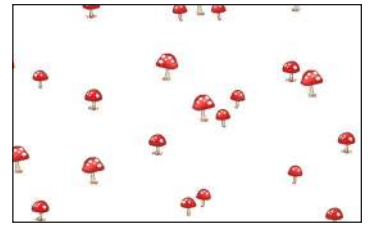
\*Images are not true to scale\*



DC11377 NAVY  
ANIMAL VIGNETTES



DC11377 TEAL  
ANIMAL VIGNETTES



DC11378 WHITE  
MUSHROOMS



DC11378 TEAL  
MUSHROOMS



DC11373 NAVY  
MONOTONE FOREST



DC11373 SPRUCE  
MONOTONE FOREST



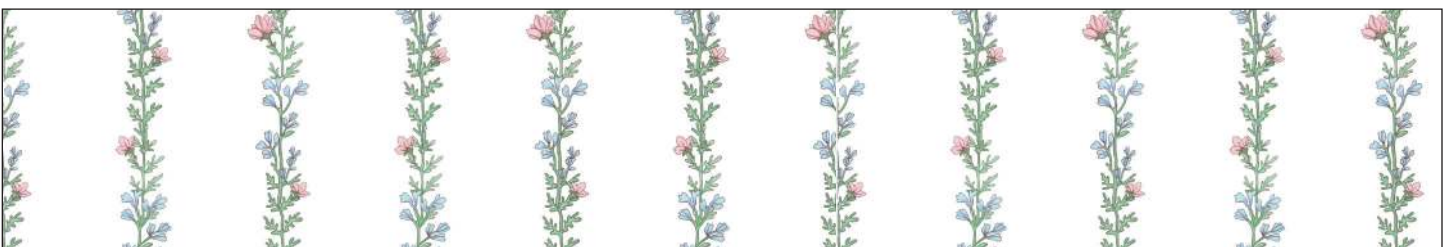
DC11375 NAVY  
FOREST BABIES



DC11375 SPRUCE  
FOREST BABIES



DC11380 SPRUCE  
FOREST PLAY DOUBLE BORDER



DC11379 WHITE  
BLOSSOMING LEAVES



# Woodland Magic Quilt

by Marsha Evans Moore

SIZE: 48 3/4"W X 48 3/4"H

LEVEL: ADVANCED BEGINNER



SCAN FOR  
KITTING INFO



FREE PATTERN AVAILABLE AT [WWW.MICHAELMILLERFABRICS.COM](http://WWW.MICHAELMILLERFABRICS.COM)



# Forest Findings Quilt

by Natalie Crabtree  
of Crabtree Arts Collective

SIZE: 74"W X 74"H

LEVEL: BEGINNER



SCAN FOR  
KITTING INFO

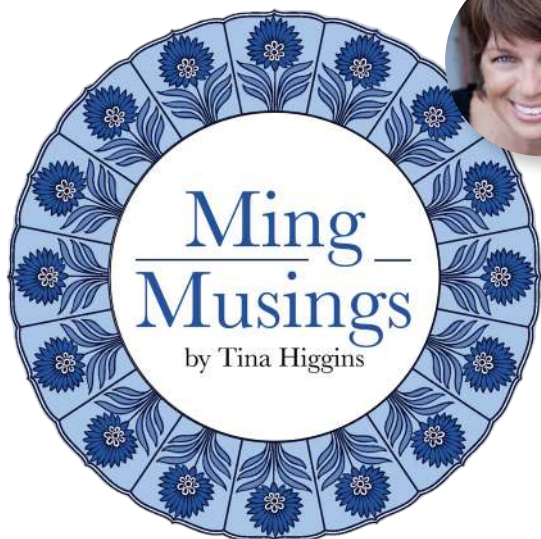


FREE PATTERN AVAILABLE AT [WWW.MICHAELMILLERFABRICS.COM](http://WWW.MICHAELMILLERFABRICS.COM)



\*Images are not true to scale\*

michael miller FABRICS



CAS0359 Ming Musings 10 yds of full collection

CAS0360 Ming Musings 15 yds of full collection

\*Not available for purchase by manufacturers

SHIPPING OCTOBER 2023

13 NEW SKUS



SCAN TO ORDER  
MING MUSINGS

This collection was inspired by the designer's love of Japanese paper and design, which began when she lived in the Japantown neighborhood in San Francisco. Her collection of vintage origami papers is extensive, and she loves using them to wrap special gifts for friends & family.



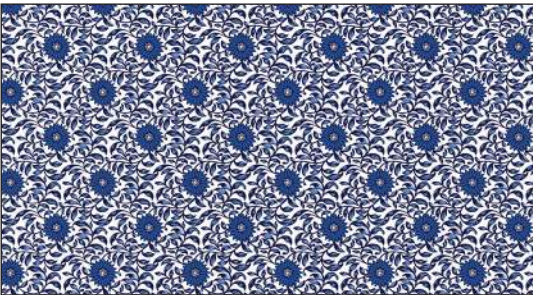




DC11391 BLUE  
MING ELEGANCE



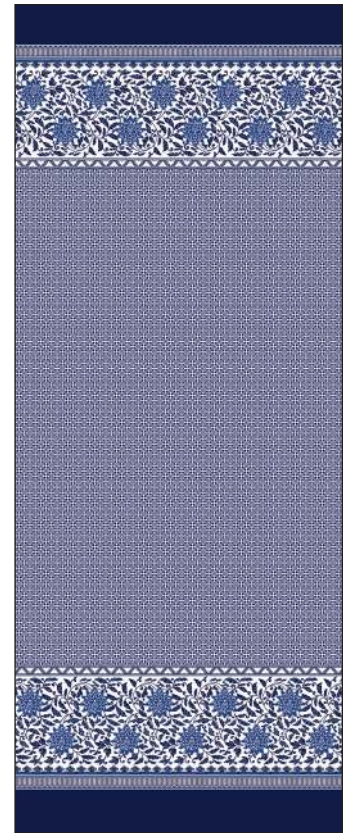
DC11391 WHITE  
MING ELEGANCE



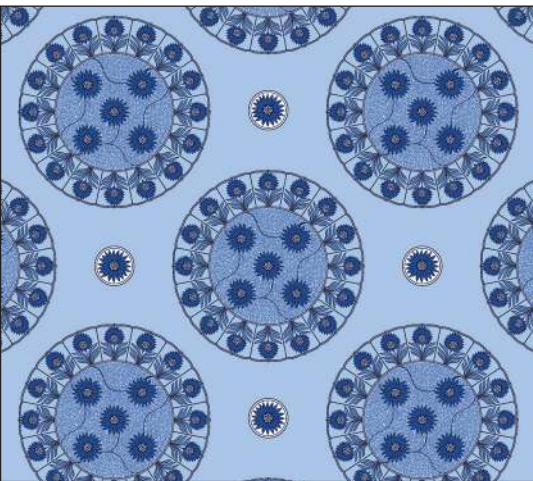
DC11395 WHITE  
BLUE ALLURE



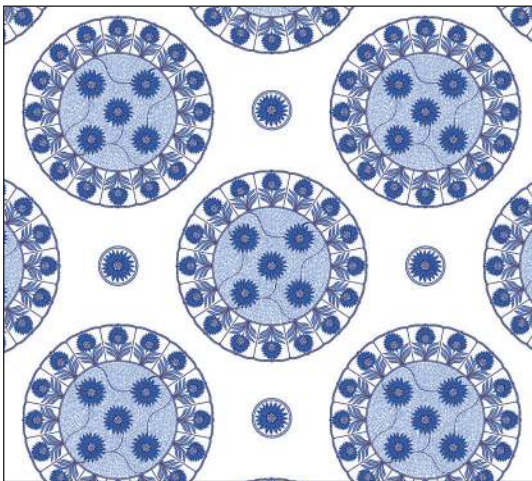
DC11395 BLUE  
BLUE ALLURE



DC11397 INDIGO  
INDIGO REFLECTION DOUBLE BORDER



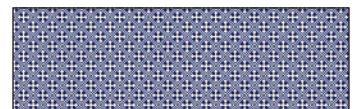
DC11392 BLUE  
PORCELAIN DREAMS



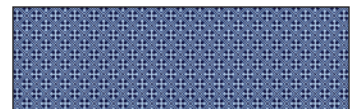
DC11392 WHITE  
PORCELAIN DREAMS



DC11396 BREEZE  
IMPERIAL WALL



DC11396 INDIGO  
IMPERIAL WALL



DC11396 NAVY  
IMPERIAL WALL



DC11393 BLUE  
BLUE DYNASTY



DC11393 WHITE  
BLUE DYNASTY



DC11394 BLUE  
IMPERIAL PALACE



# Kangxi Treasure Quilt

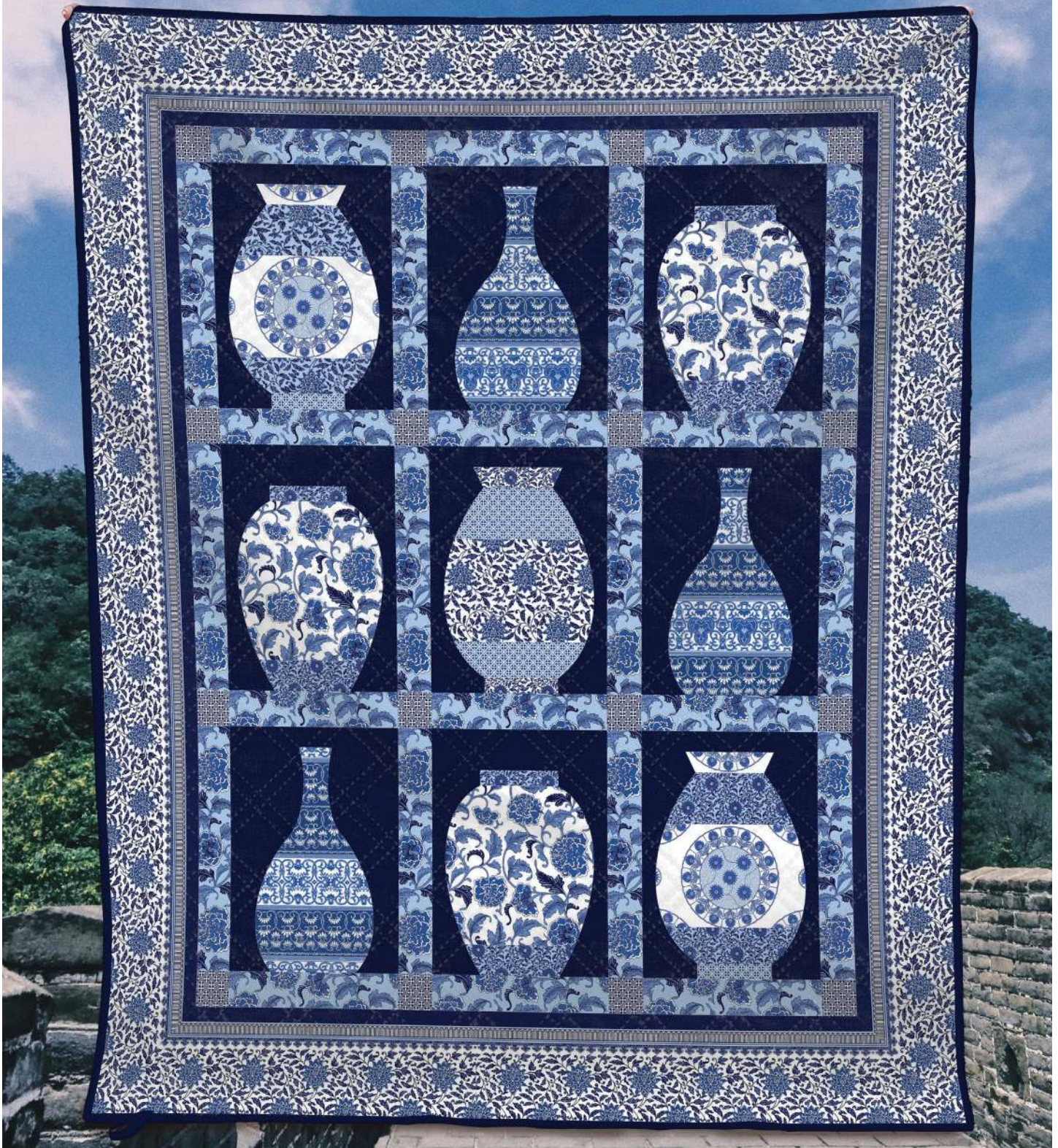
by Marsha Evans Moore

SIZE: 45"W X 54"H

LEVEL: INTERMEDIATE



SCAN FOR  
KITTING INFO



FREE PATTERN AVAILABLE AT [WWW.MICHAELMILLERFABRICS.COM](http://WWW.MICHAELMILLERFABRICS.COM)



# Plated Quilt

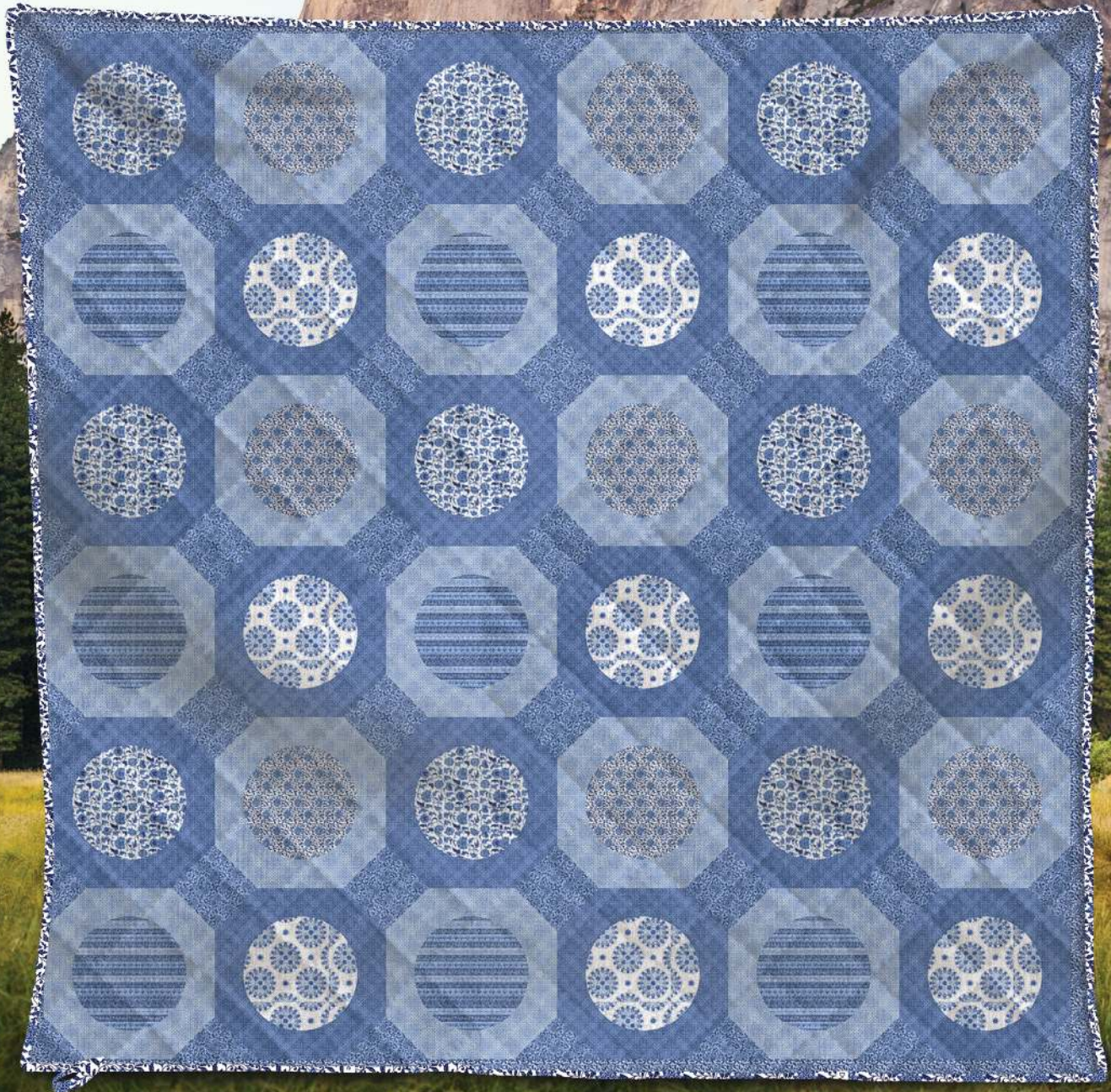
by Siobhan for CDM365 Studios

SIZE: 76"W X 76"H

LEVEL: INTERMEDIATE



SCAN FOR  
KITTING INFO



FREE PATTERN AVAILABLE AT [WWW.MICHAELMILLERFABRICS.COM](http://WWW.MICHAELMILLERFABRICS.COM)



michael miller FABRICS



## 14 NEW SKUS

CAS0349 Parisian Cats 10 yds of full collection  
CAS0350 Parisian Cats 15 yds of full collection



SCAN TO ORDER  
PARISIAN CATS

Meow in french is merci. Join these friendly cats as they roam the streets of Paris. From paw prints to the Eiffel Tower, this collection is purrfect for a cat loving world traveler.

SHIPPING OCTOBER 2023



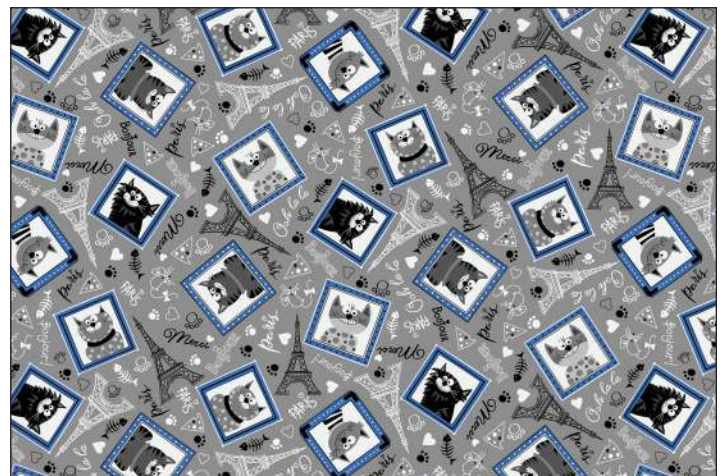
CX11398 BLUE  
PARISIAN CATS



CX11398 RED  
PARISIAN CATS



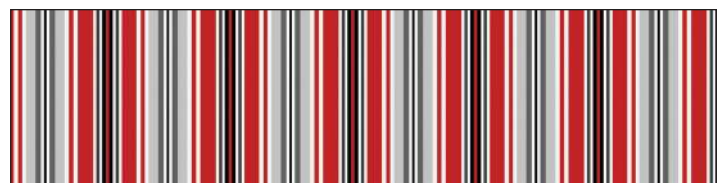
CX11399 BLACK  
PARISIAN CAT PORTRAITS



CX11399 GRAY  
PARISIAN CAT PORTRAITS



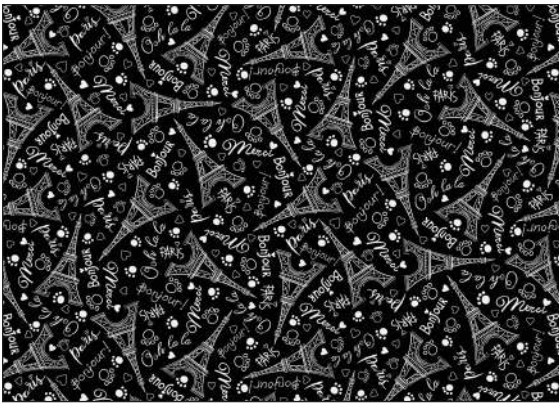
CX11404 BLUE  
PARISIAN STRIPE



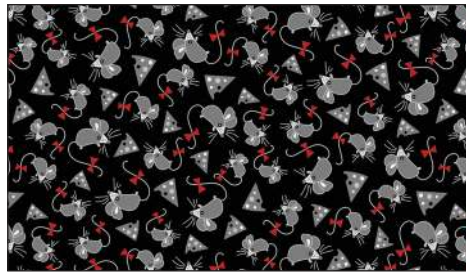
CX11404 RED  
PARISIAN STRIPE



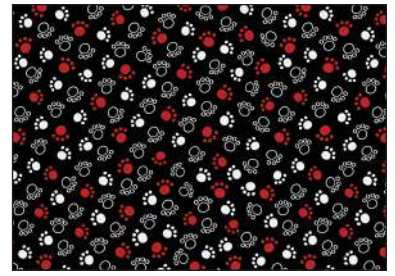
\*Images are not true to scale\*



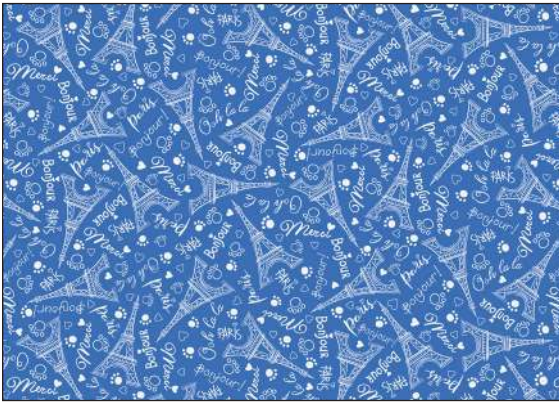
CX11401 BLACK  
BONJOUR PARIS



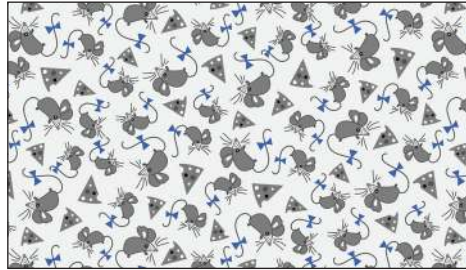
CX11400 BLACK  
PARISIAN MICE



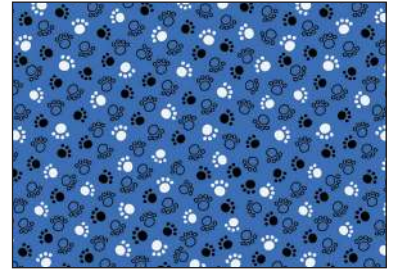
CX11402 BLACK  
STROLLING PARIS



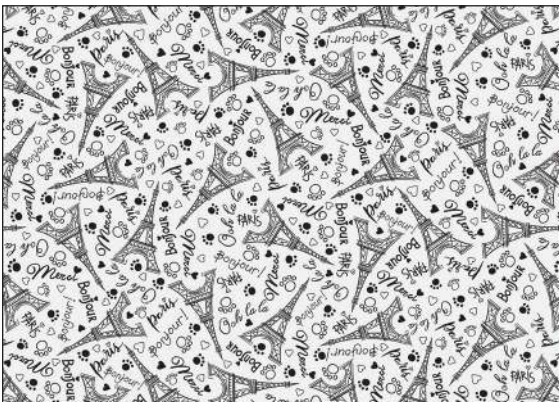
CX11401 BLUE  
BONJOUR PARIS



CX11400 CREAM  
PARISIAN MICE



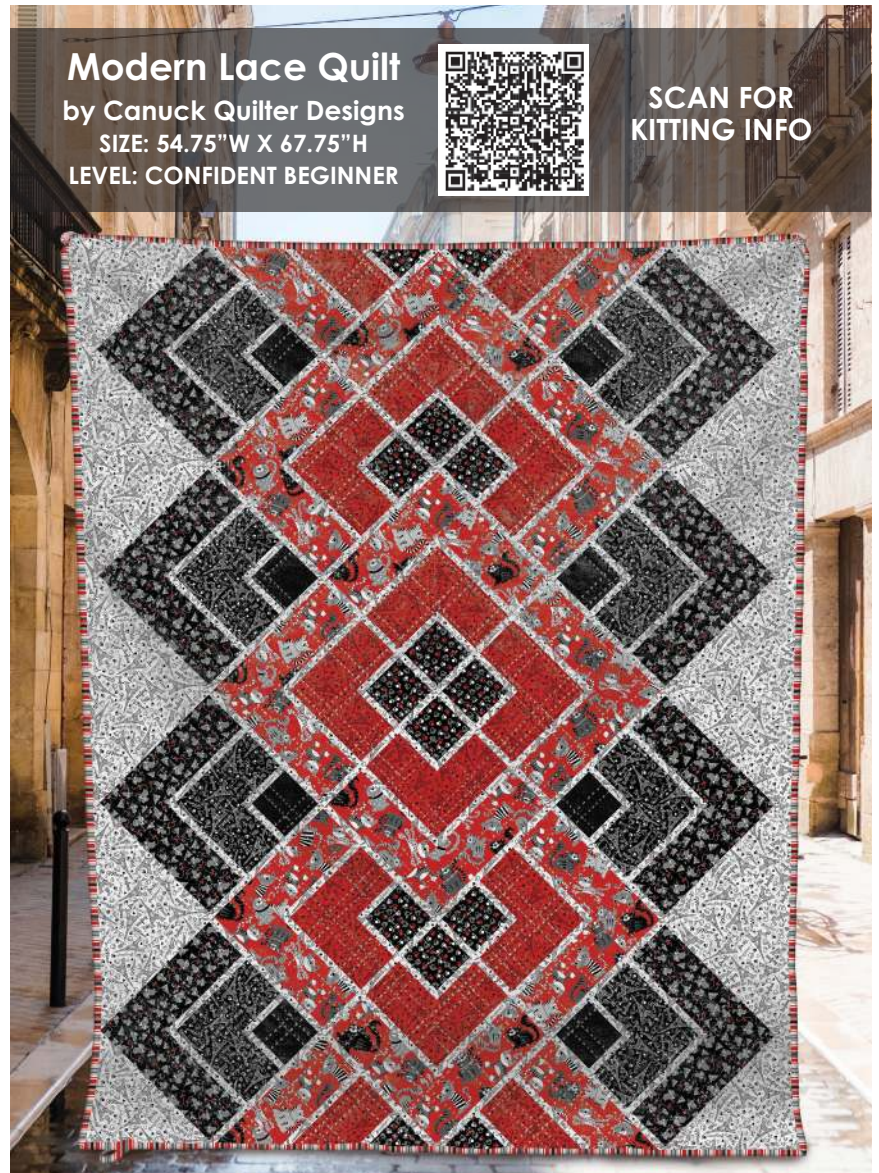
CX11402 BLUE  
STROLLING PARIS



CX11401 CREAM  
BONJOUR PARIS



CX11401 RED  
BONJOUR PARIS



**Modern Lace Quilt**  
by Canuck Quilter Designs  
SIZE: 54.75"W X 67.75"H  
LEVEL: CONFIDENT BEGINNER



**SCAN FOR  
KITTING INFO**

COMMERCIAL PATTERN AVAILABLE AT [WWW.CANUCKQUILTERDESIGNS.COM](http://WWW.CANUCKQUILTERDESIGNS.COM),  
CHECKER DISTRIBUTORS & EE SCHENCK





**SCAN TO ORDER  
VINTAGE VALENTINES**

Take a step back in time and share the love with this retro style Valentine collection. This collection is filled with Valentines day cards and sayings to share with your loved ones. What better way to say I love you than with a hand made gift.

**SHIPPING OCTOBER 2023**

CAS0355 Vintage Valentines 10 yds of full collection  
CAS0356 Vintage Valentines 15 yds of full collection

**13 NEW SKUS**



## Panel Blast Quilt

by Swirly Girls Design

SIZE: 63"W X 81"H

LEVEL: CONFIDENT BEGINNER



**SCAN FOR  
KITTING INFO**

**COMMERCIAL PATTERN AVAILABLE  
AT [WWW.SWIRLYGIRLSDESIGN.COM](http://WWW.SWIRLYGIRLSDESIGN.COM)  
& CHECKER DISTRIBUTORS**





DCX10985 BLUE  
LOVE NOTES



DCX10985 PINK  
LOVE NOTES



DCX10986 RED  
BE MINE



DCX10987 PINK  
VALENTINE GREETINGS

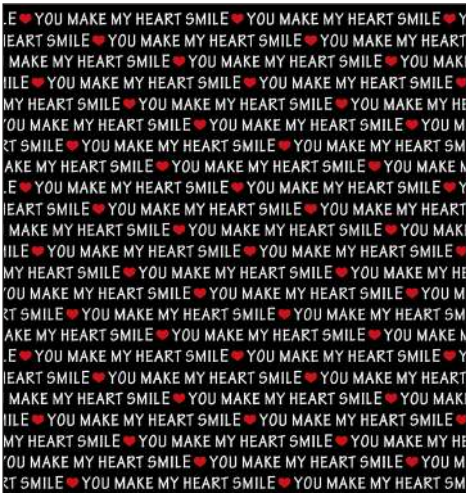


DCX10988 BLACK  
CUTIE PIE

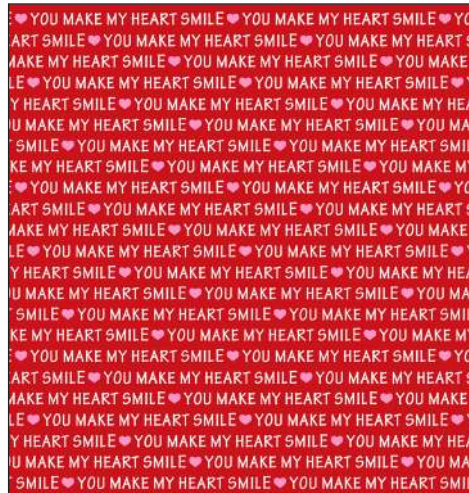


DCX10988 RED  
CUTIE PIE

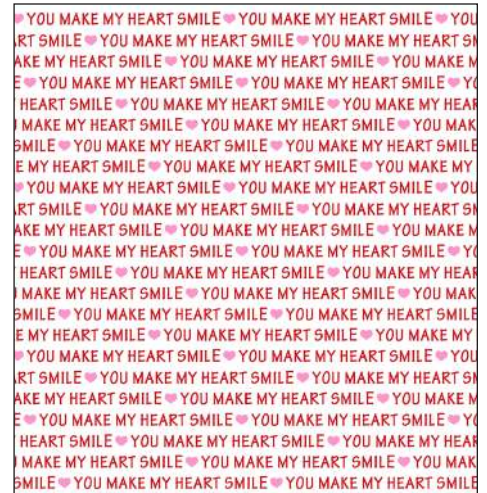




CX10990 BLACK  
YOU MAKE MY HEART SMILE



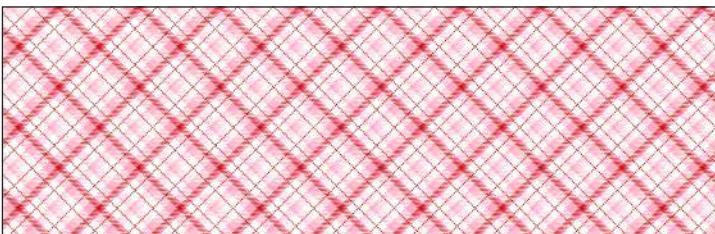
CX10990 RED  
YOU MAKE MY HEART SMILE



CX10990 WHITE  
YOU MAKE MY HEART SMILE



DCX10993 WHITE  
KISSES



CX10992 PINK  
VALENTINE PLAID



DCX10991 MULTI  
SWEETS



CX10994 BLACK  
SMILE PANEL



# Love Notes Quilt

by Natalie Crabtree of  
Crabtree Arts Collective

SIZE: 72" W X 75" H

LEVEL: INTERMEDIATE



SCAN FOR  
KITTING INFO



FREE PATTERN AVAILABLE AT [WWW.MICHAELMILLERFABRICS.COM](http://WWW.MICHAELMILLERFABRICS.COM)





CAS0347 Old Masters 10 yds of full collection  
CAS0348 Old Masters 15 yds of full collection



SCAN TO ORDER  
OLD MASTERS

Old Masters takes us into a world of classic art. Imagine sitting on a blush satin chair in a gilded room soaking in a masterpiece from one of the greats. This collection will teleport you into that world and makes for the perfect quilt for any art lover.

SHIPPING NOVEMBER 2023

14 NEW SKUS



DCX11405 TAN  
GREAT ARTISTS



DCX11405 BROWN  
GREAT ARTISTS



DCX11406 BROWN  
A ROSE IS A ROSE



DCX11406 CREAM  
A ROSE IS A ROSE





DCX11408 BROWN  
BAROQUE



DCX11407 PINK  
ROYAL IVY



DCX11408 PINK  
BAROQUE



DCX11407 TAN  
ROYAL IVY



DCX11408 TAN  
BAROQUE



DCX11407 BROWN  
ROYAL IVY



DCX11407 GREEN  
ROYAL IVY



DCX11409 BROWN  
GLORY



DCX11409 MULTI  
GLORY



DCX11409 PINK  
GLORY



# Art Gallery Quilt

by Heidi Pridemore

SIZE: 64"W X 78"H

LEVEL: INTERMEDIATE



SCAN FOR  
KITTING INFO



COMMERCIAL PATTERN AVAILABLE AT [WWW.THEWHIMSICALSHOP.COM](http://WWW.THEWHIMSICALSHOP.COM), CHECKER DISTRIBUTORS  
& EE SCHENCK



# Spanish Star Quilt

by Siobhan for CDM365 Studios

SIZE: 88"W X 88"H

LEVEL: CONFIDENT BEGINNER



SCAN FOR  
KITTING INFO



FREE PATTERN AVAILABLE AT [WWW.MICHAELMILLERFABRICS.COM](http://WWW.MICHAELMILLERFABRICS.COM)



michael miller FABRICS

# BLACK AND WHITE & BRIGHT ALLOVER

SHIPPING NOVEMBER 2023

CAS0339 Black and White & Bright Allover 10 yds of full collection  
CAS0340 Black and White & Bright Allover 15 yds of full collection



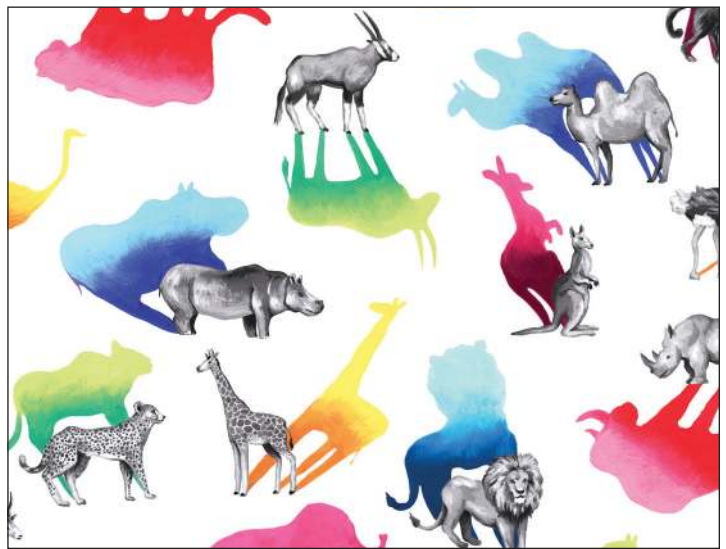
SCAN TO ORDER  
BLACK AND WHITE &  
BRIGHT ALLOVER

Ever wonder how animals see their shadows? This fun and vibrant collection pictures a world of black and white animals and their colorful shadows. The "Animal Kingdom Patchwork" is great for fussy cutting and the rainbow "Jungle Ombre" is perfect to bring a burst of color to your next project.

## 14 NEW SKUS



CX11456 BLACK  
SAFARI PARK



CX11456 WHITE  
SAFARI PARK



CX11457 WHITE  
MOTLEY MENAGERIE



CX11457 BLACK  
MOTLEY MENAGERIE



CX11465 MULTI  
BRILLIANT STRIPE



CX11463 MULTI  
JUNGLE OMBRE





CX11459 MULTI  
ANIMAL PARADE



CX11458 BLACK  
ANIMAL KINGDOM PATCHWORK



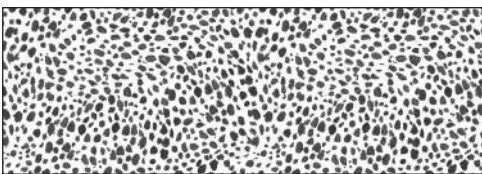
CX11460 WHITE  
WONDERS OF SAFARI



CX11460 BLACK  
WONDERS OF SAFARI



CX11461 MULTI  
COLORFUL CAMOUFLAGE



CX11464 WHITE  
CHEETAH SKIN




CX11462 BLACK  
CONFETTI SHOWER




CX11462 WHITE  
CONFETTI SHOWER

## Kaleidoscope Quilt

by Project House 360  
SIZE: 54"W X 62"H  
LEVEL: INTERMEDIATE

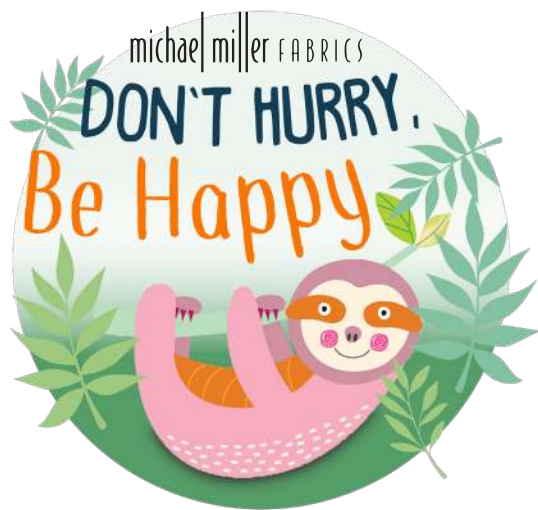


SCAN FOR  
KITTING INFO



FREE PATTERN AVAILABLE AT [WWW.MICHAELMILLERFABRICS.COM](http://WWW.MICHAELMILLERFABRICS.COM)





SHIPPING NOVEMBER 2023



SCAN TO ORDER  
DON'T HURRY, BE HAPPY

Time to embrace your inner sloth and slow down. These adorable animals cling onto their tree branches and sure know how to relax. The panel in this collection makes for an easy quilt and the perfect gift.

## 14 NEW SKUS

CAS0345 Don't Hurry, Be Happy 10 yds of full collection  
CAS0346 Don't Hurry, Be Happy 15 yds of full collection



CX11134 BLACK  
HANGING THERE



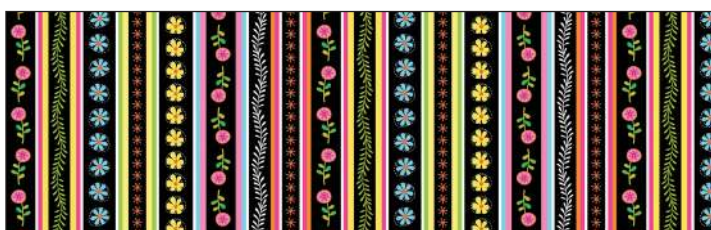
CX11134 WHITE  
HANGING THERE



CX11135 WHITE  
TREE DWELLER



CX11135 BLACK  
TREE DWELLER



CX11141 MULTI  
PERFECT STRIPE



CX11140 WHITE  
SLOTH'S SPOT



CX11140 BLACK  
SLOTH'S SPOT



# Bubbles Quilt

by Kate Colleran Designs LLC  
SIZE: 50"W X 60"H  
LEVEL: ADVANCED BEGINNER



SCAN FOR  
KITTING INFO



COMMERCIAL PATTERN AVAILABLE AT [WWW.SHOP.KATECOLLERANDESIGNS.COM](http://WWW.SHOP.KATECOLLERANDESIGNS.COM)

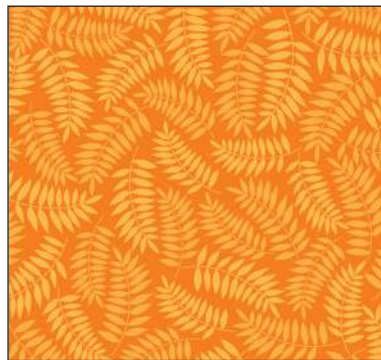




CX11136 MULTI  
DON'T HURRY, BE HAPPY PATCHWORK



CX11137 JADE  
GREEN DIET



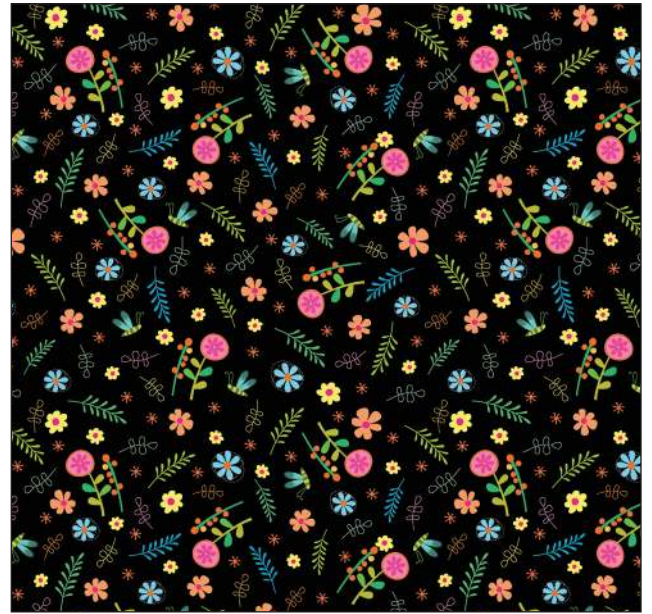
CX11137 ORANGE  
GREEN DIET



CX11139 WHITE  
LUSCIOUS GARDEN

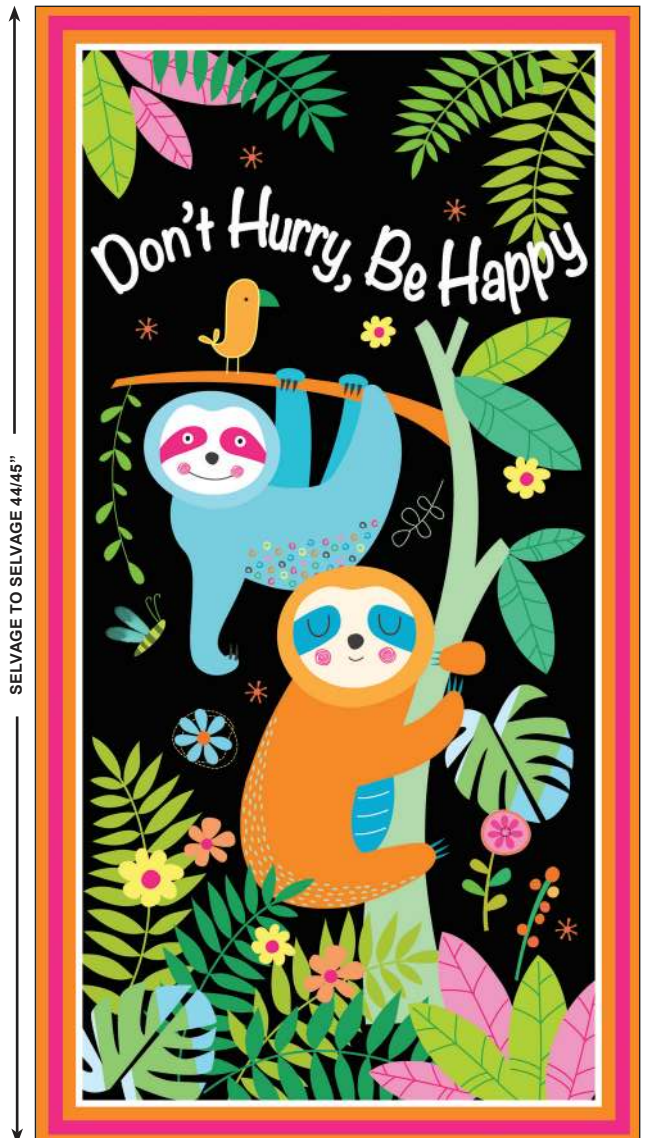


CX11139 BLACK  
LUSCIOUS GARDEN



CX11138 BLACK  
SLOTH FLOWER

24" REPEAT



CX11133 MULTI  
DON'T HURRY, BE HAPPY PANEL



# Hang In There Quilt

by Marsha Evans Moore

SIZE: 44"W X 59 1/4"H

LEVEL: INTERMEDIATE



SCAN FOR  
KITTING INFO



FREE PATTERN AVAILABLE AT [WWW.MICHAELMILLERFABRICS.COM](http://WWW.MICHAELMILLERFABRICS.COM)

MICHAEL MILLER FABRICS' APRIL 2023 RELEASE





**SCAN TO ORDER  
FLORA BELLA**

This soft floral collection brings a serene and tranquil feel. The “Blooming Patchwork” makes the perfect cheater quilt and the stunning border print is great for apparel and bedding.

## 16 NEW SKUS

**SHIPPING NOVEMBER 2023**

CAS0337 Flora Bella 10 yds of full collection  
CAS0338 Flora Bella 15 yds of full collection



CX11412 BLUE  
SHADOW FLOWERS



CX11412 INDIGO  
SHADOW FLOWERS



CX11412 WIND  
SHADOW FLOWERS



CX11413 DENIM  
LONG STEM ROSES



CX11413 WIND  
LONG STEM ROSES



CX11414 WIND  
ARTFUL BOUQUET





CX11418 MULTI  
BLOOMING PATCHWORK



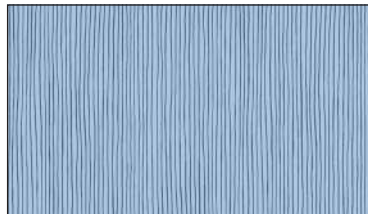
CX11416 BOY  
TOSSED NOSEGAY



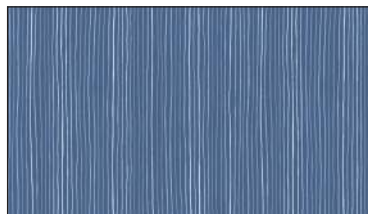
CX11416 DENIM  
TOSSED NOSEGAY



CX11417 INDIGO  
BLOOM BOOM BORDER



CX11419 BLUE  
SILKY STRIPE



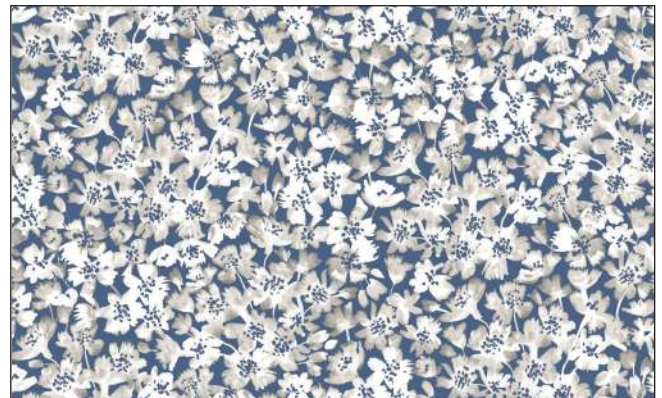
CX11419 DENIM  
SILKY STRIPE



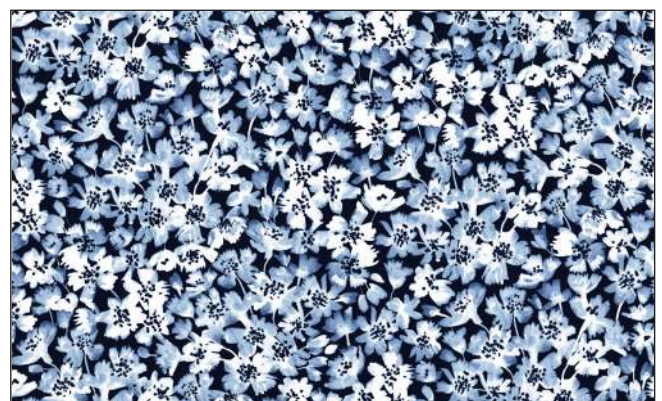
CX11419 INDIGO  
SILKY STRIPE



CX11419 WIND  
SILKY STRIPE



CX11415 DENIM  
FLOWER FANCY



CX11415 NAVY  
FLOWER FANCY



# Flora Bella Quilt

by Heidi Pridemore

SIZE: 60"W X 80"H

LEVEL: INTERMEDIATE



SCAN FOR  
KITTING INFO



**FREE PATTERN AVAILABLE AT [WWW.MICHAELMILLERFABRICS.COM](http://WWW.MICHAELMILLERFABRICS.COM)**



# Starlit Picnic Quilt

by Canuck Quilter Designs

SIZE: 61.5"W X 78.5"H

LEVEL: BEGINNER



SCAN FOR  
KITTING INFO



**COMMERCIAL PATTERN AVAILABLE AT [WWW.CANUCKQUILTERDESIGNS.COM](http://WWW.CANUCKQUILTERDESIGNS.COM)  
& CHECKER DISTRIBUTORS**



michael|miller FABRICS

# Sweet Indulgence



SCAN TO ORDER  
SWEET INDULGENCE

SHIPPING NOVEMBER 2023

CAS0343 Sweet Indulgence 10 yds of full collection

CAS0344 Sweet Indulgence 15 yds of full collection

Whip up a sweet treat with this culinary collection. Gather the ingredients and the kitchen tools and make some scrumptious cupcakes. From kitchen accessories to cupcake quilts this collection is perfect for anyone who loves confection.

14 NEW SKUS







CX11333 BLUE  
LET'S MAKE CUPCAKE



CX11333 CREAM  
LET'S MAKE CUPCAKE



CX11333 PINK  
LET'S MAKE CUPCAKE



CX11334 PINK  
PERFECT DISPLAY



CX11334 CREAM  
PERFECT DISPLAY



CX11334 BLUE  
PERFECT DISPLAY



CX11335 BLUE  
DELICIOUS CUPCAKE



CX11335 PINK  
DELICIOUS CUPCAKE



CX11338 MULTI  
CUPCAKE STRIPE





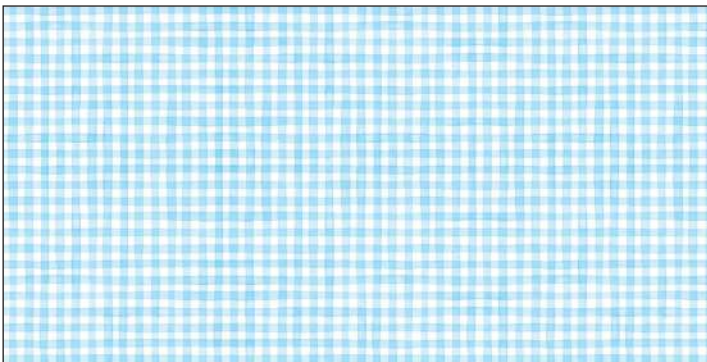
CX11371 MULTI  
SWEET INDULGENCE PATCH



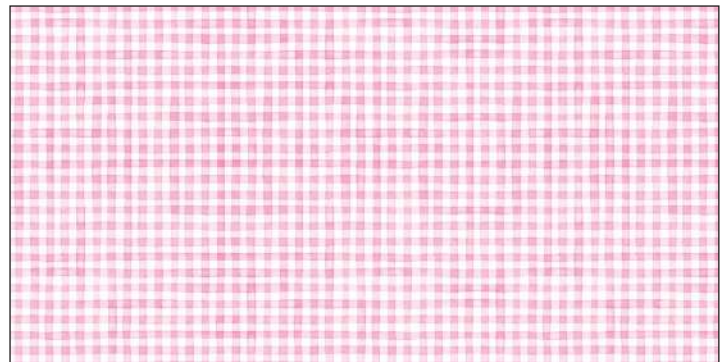
CX11337 CREAM  
BAKING GEAR



CX11336 CREAM  
KEY INGREDIENTS



CX11339 BLUE  
CUPCAKE PLAID



CX11339 PINK  
CUPCAKE PLAID

## Easy Casserole Mitt

by The Fabric Addict

SIZE: 8.5"W X 35"H

LEVEL: CONFIDENT BEGINNER



SCAN FOR  
KITTING INFO



COMMERCIAL PATTERN AVAILABLE AT [WWW.FABRICADDICT.NET](http://WWW.FABRICADDICT.NET) & CHECKER DISTRIBUTORS



# Patisserie Shop Quilt

by Natalie Crabtree  
of Crabtree Arts Collective

SIZE: 57"W X 63"H

LEVEL: INTERMEDIATE



SCAN FOR  
KITTING INFO



FREE PATTERN AVAILABLE AT [WWW.MICHAELMILLERFABRICS.COM](http://WWW.MICHAELMILLERFABRICS.COM)





\*Images are not true to scale\*

SCAN TO ORDER  
COLORFUL  
AQUATIC WORLD

SHIPPING DECEMBER 2023

CAS0341 Colorful Aquatic World 10 yds of full collection  
CAS0342 Colorful Aquatic World 15 yds of full collection

## 16 NEW SKUS

Melanie specializes in a mixed media style that blends digital and traditional media. Her cheerful color palettes and bold patterns can be found in her illustrations and abstract work. She has worked on projects ranging from children's picture books to greeting cards to large-scale murals. The artist's enchantment with the sea inspired the Colorful Aquatic World Collection. Melanie lives near the ocean and likes to imagine what magical creatures lurk beneath the ocean's surface.



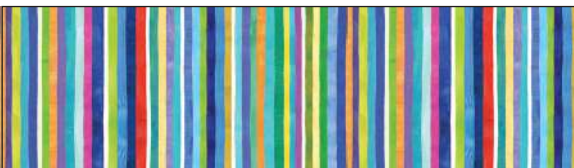
DC11355 NAVY  
FRIENDS OF THE SEA



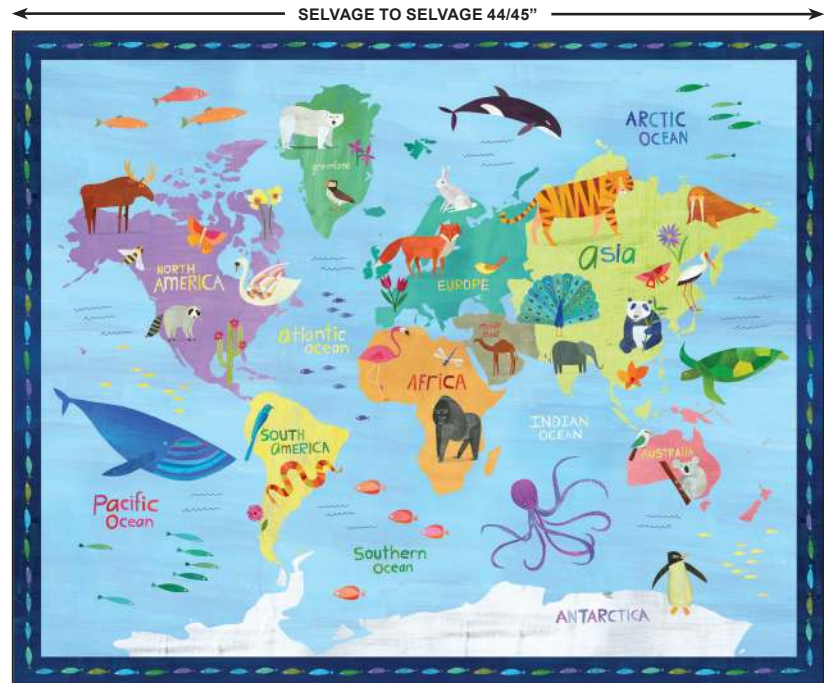
DC11355 SKY  
FRIENDS OF THE SEA



DC11356 SKY  
CRAWLING CRABS



DC11362 MULTI  
AQUATIC STRIPE



DDC11353 MULTI  
ANIMALS AROUND WORLD MAP PANEL





DC11357 SKY  
EIGHT TWISTED TENTACLES



DC11357 NAVY  
EIGHT TWISTED TENTACLES



DC11361 MULTI  
CRUNCH



DDC11354 MULTI  
AQUATIC LIFE



DC11363 SKY  
PERFECT PALETTE



DC11363 NAVY  
PERFECT PALETTE

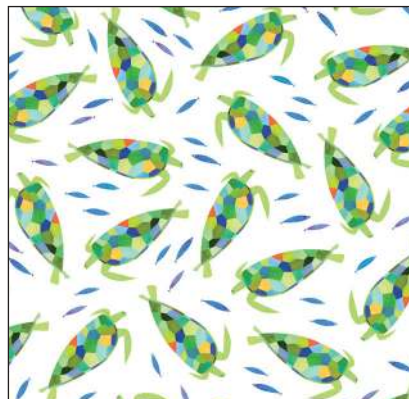


DC11363 ORANGE  
PERFECT PALETTE

24" REPEAT



DC11359 SKY  
SPOTTED FROG



DC11358 WHITE  
SWIMMING SEA TURTLE



DC11360 WHITE  
ONE FISH TWO FISH



DDC11352 MULTI  
EXPLORER OF THE SEA PANEL



# Fun-der The Sea Quilt

by Marsha Evans Moore

SIZE: 44"W X 55 1/4"H

LEVEL: INTERMEDIATE



SCAN FOR  
KITTING INFO



FREE PATTERN AVAILABLE AT [WWW.MICHAELMILLERFABRICS.COM](http://WWW.MICHAELMILLERFABRICS.COM)



# Window Panes Quilt

by The Fabric Addict

SIZE: 65"W X 85"H

LEVEL: CONFIDENT BEGINNER



SCAN FOR  
KITTING INFO



COMMERCIAL PATTERN AVAILABLE AT [WWW.THEFABRICADDICT.NET](http://WWW.THEFABRICADDICT.NET) & CHECKER DISTRIBUTORS





**SCAN TO ORDER  
WELCOME TO OUR LAKE**

Grab your canoe and let's head to the lake. This stunningly detailed collection depicts life by the lake and all the nature and animals that surround it. From the fish to the birds that fly above and everything in between. Makes the perfect lakehouse quilt.

**SHIPPING DECEMBER 2023**

CAS0351 Welcome to Our Lake 10 yds of full collection  
CAS0352 Welcome to Our Lake 15 yds of full collection

**14 NEW SKUS**



## **Bars & Stripes Quilt**

**by Everyday Stitches**

SIZE: 66"W X 80"H

LEVEL: BEGINNER

**COMMERCIAL PATTERN  
AVAILABLE AT  
[WWW.EVERYDAYSTITCHES.COM](http://WWW.EVERYDAYSTITCHES.COM)  
& CHECKER DISTRIBUTORS**



**SCAN FOR  
KITTING INFO**





DCX11475 MULTI  
OUR LAKE



DCX11477 MULTI  
FISHING ON OUR LAKE



DCX11478 MULTI  
WILDLIFE AT OUR LAKE



DCX11484 MULTI  
LAKE STRIPE



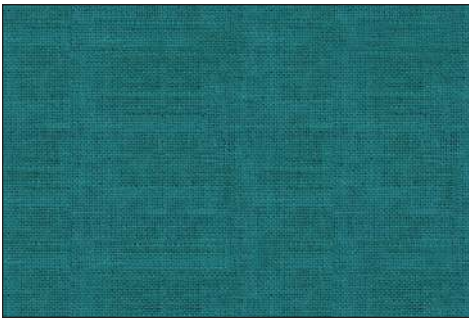
DCX11480 NAVY  
FISH



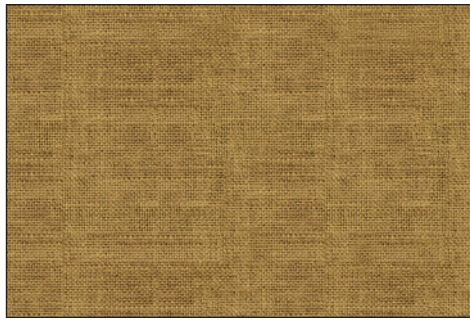
DCX11480 TEAL  
FISH



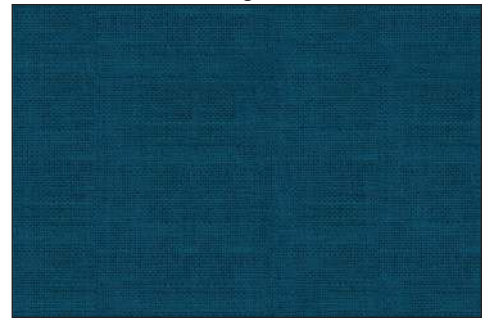
\*Images are not true to scale\*



CX11286 AQUA  
BEACH CANVAS



CX11286 OCHRE  
BEACH CANVAS



CX11286 DARK BLUE  
BEACH CANVAS

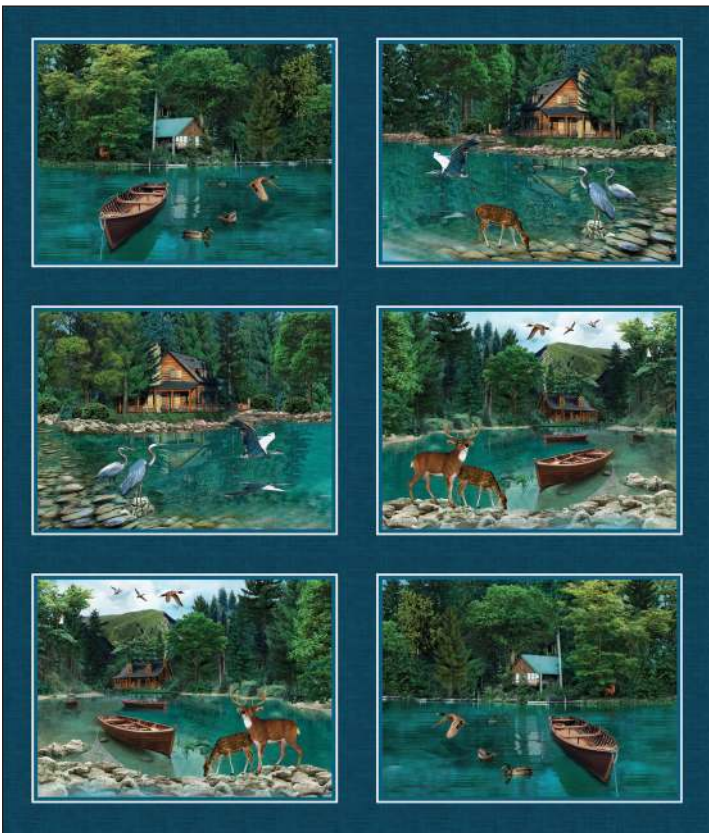


DCX11479 AQUA  
DUCKS ON OUR LAKE



DCX11481 SKY  
BIRDS ABOVE OUR LAKE

← 38" REPEAT →



DCX11476 MULTI  
SCENES OF OUR LAKE PANEL



DCX11483 CREAM  
FLY FISHING



DCX11483 LIGHT BLUE  
FLY FISHING

SELVAGE TO SELVAGE 44 1/4"



# Block Talk Quilt

by Swirly Girls Design

SIZE: 71"W X 76"H

LEVEL: CONFIDENT BEGINNER



SCAN FOR  
KITTING INFO



**COMMERCIAL PATTERN AVAILABLE AT [WWW.SWIRLYGIRLSDESIGN.COM](http://WWW.SWIRLYGIRLSDESIGN.COM)  
& CHECKER DISTRIBUTORS**

MICHAEL MILLER FABRICS' APRIL 2023 RELEASE



APRIL 2023 NEW PRE-CUTS

michael miller FABRICS

# BLACK & WHITE

See basics catalog for our new  
Black and White Assortment!



SCAN HERE TO VIEW OUR  
NEW BLACK AND WHITE  
ASSORTMENT

## Fat Quarter Bundle

**FQ0346 - BEAUTY**



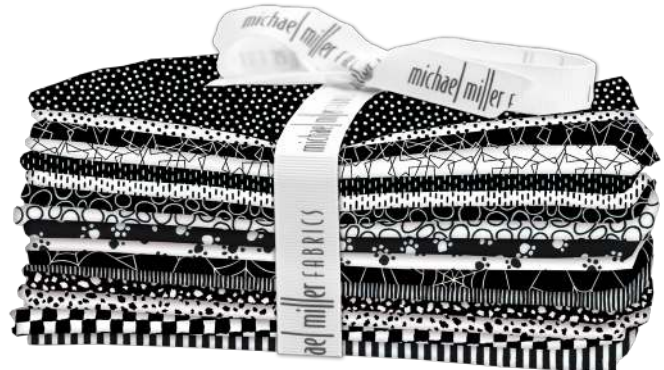
### FAT QUARTER BUNDLE

34 PCS PER BUNDLE | 18" X 22"  
100% COTTON

PACKAGED 3 BUNDLES PER CARTON  
SHIPPING JULY 2023

## Fat Quarter Bundle

**FQ0347 - MINI**



### FAT QUARTER BUNDLE

16 PCS PER BUNDLE | 18" X 22" | 100% COTTON  
PACKAGED 3 BUNDLES PER CARTON  
SHIPPING JULY 2023



SCAN TO VIEW  
ALL PRE-CUTS

WWW.MICHAELMILLERFABRICS.COM | @MICHAELMILLERFABRICS | 212.704.0774

FOR MORE INFORMATION, PLEASE CONTACT YOUR SALES REP OR YOUR ACCOUNT MANAGER  
p.212.704.0774 | info@michaelmillerfabrics.com