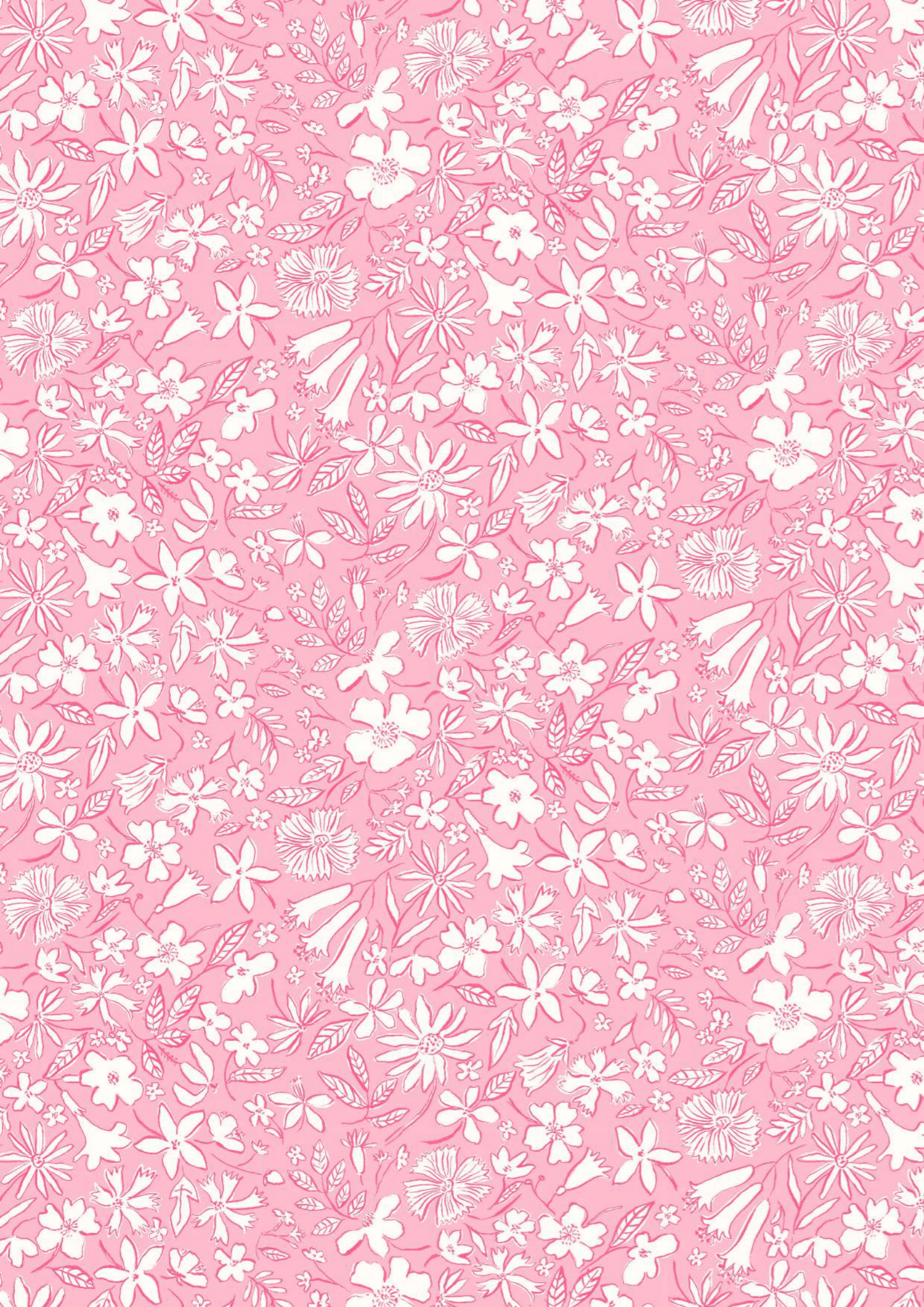




# THE RIVIERA COLLECTION

**LIBERTY.**  
FABRICS



## A NOTE FROM LIBERTY

The Riviera quilting collection from Liberty Fabrics takes us on a tour of the British coastline, celebrating the quirks and traditions that make it so magical – from shell grottos and rock-pooling to ice creams and colourful beach huts.

Inspired by dazzling seascapes and panoramic views, this nostalgic collection references shells, coral, sailing boats, deckchair stripes and retro sun parasols. Traditionally screen printed onto Lasenby cotton, the collection is available in three distinct colour stories.

**LIBERTY.**  
FABRICS

Whilst every effort has been made to ensure colour consistency, please be aware that due to the nature of the product and the print process, slight variances may occur in colour definition between this document and the fabric.

© 2021 Liberty Fabrics. All Rights Reserved.



A.



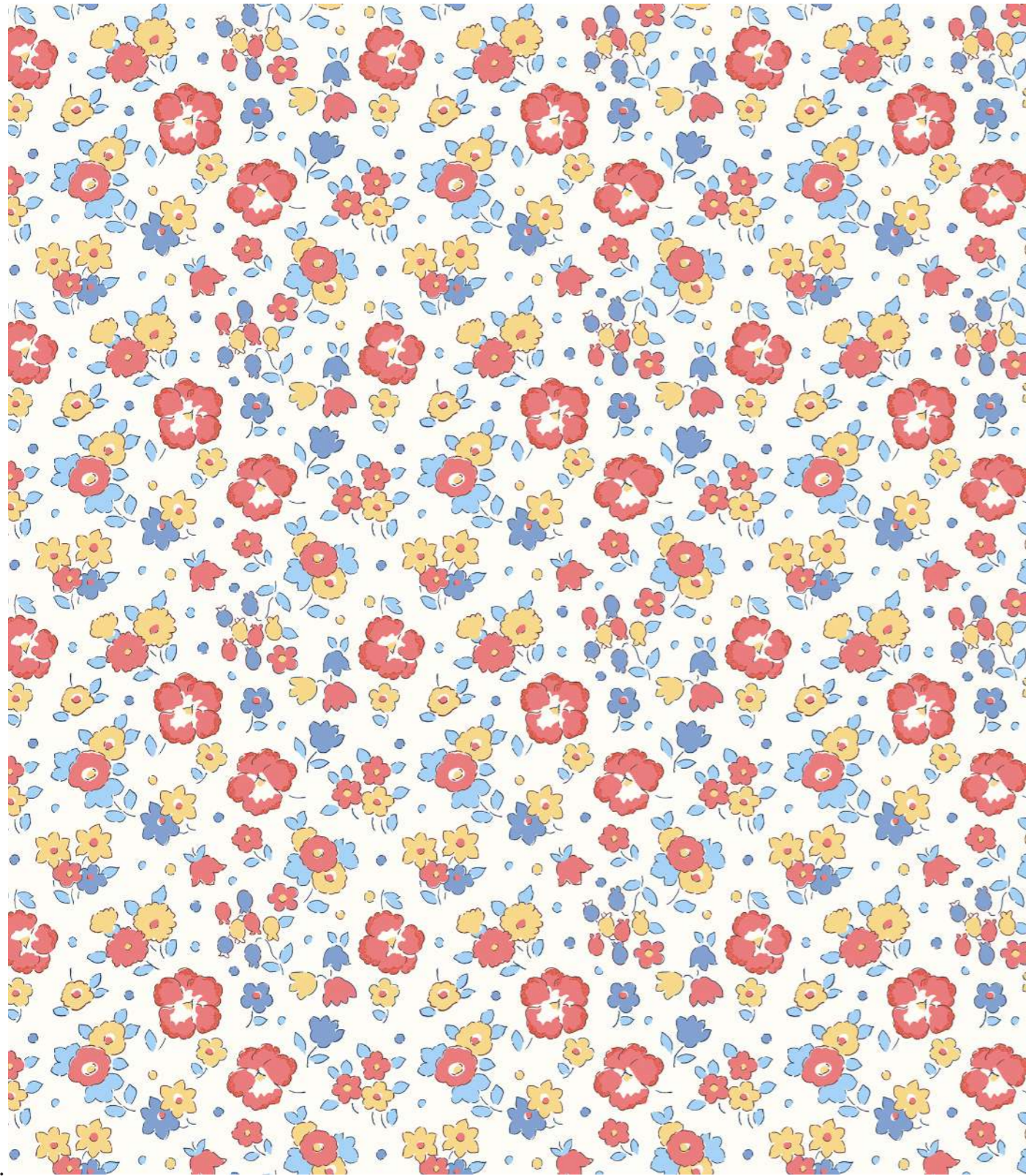
B.



C.

## ADVENTURE COAST

Hand-painted in the Liberty studio exclusively for the Riviera quilting collection, Adventure Coast was inspired by colourful seascapes and panoramic views of charming coastal architecture. Scenic vistas reveal quirky details, from sun loungers, and parasols, to beach huts, boats, and palm trees.



A.



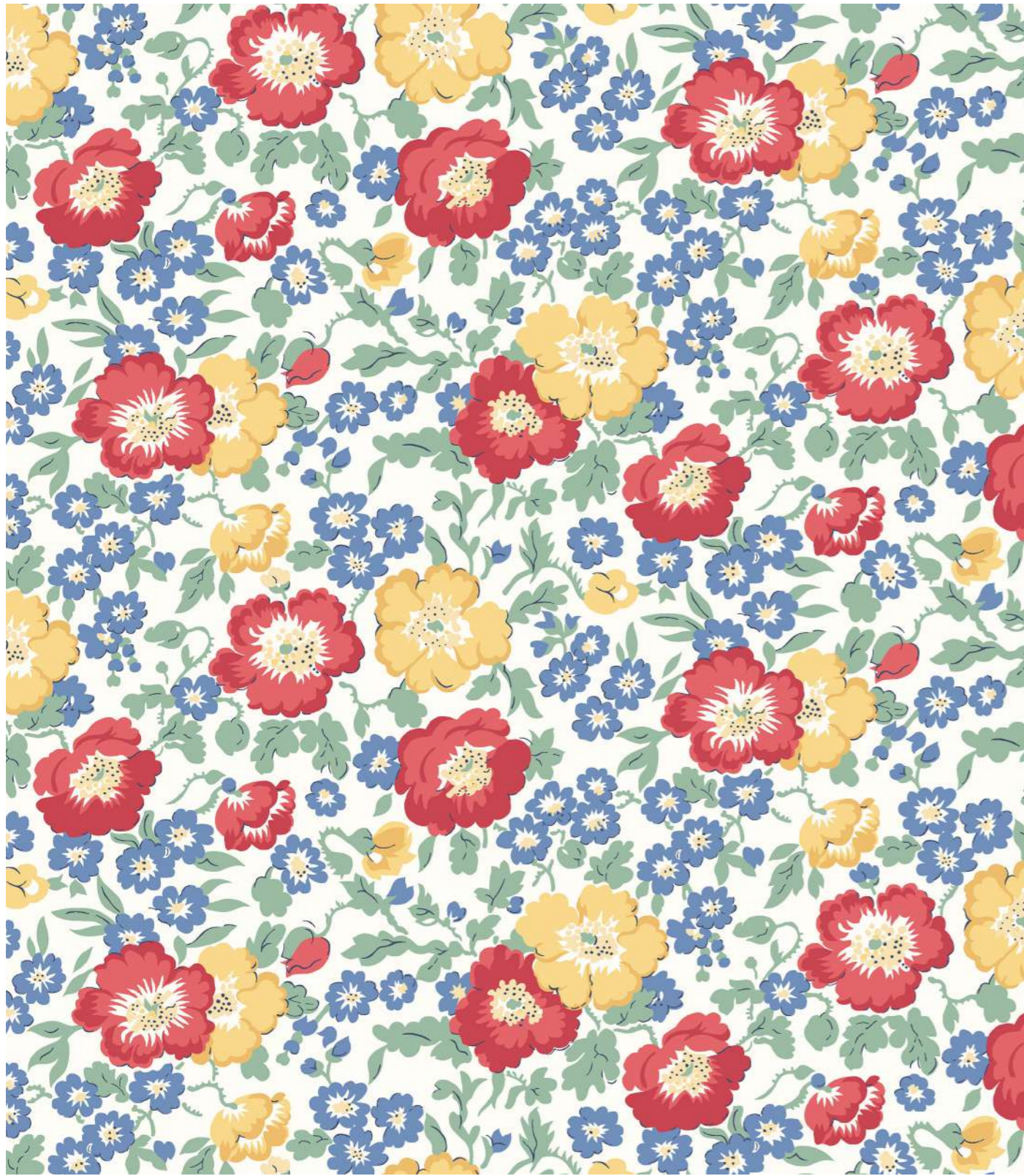
B.



C.

## SEASIDE BLOSSOM

Seaside blossom was originally created for Liberty in the 1930s. The design showcases a scattering of simplified bell flowers and violas, sprinkled among tiny buds and berries.



A.



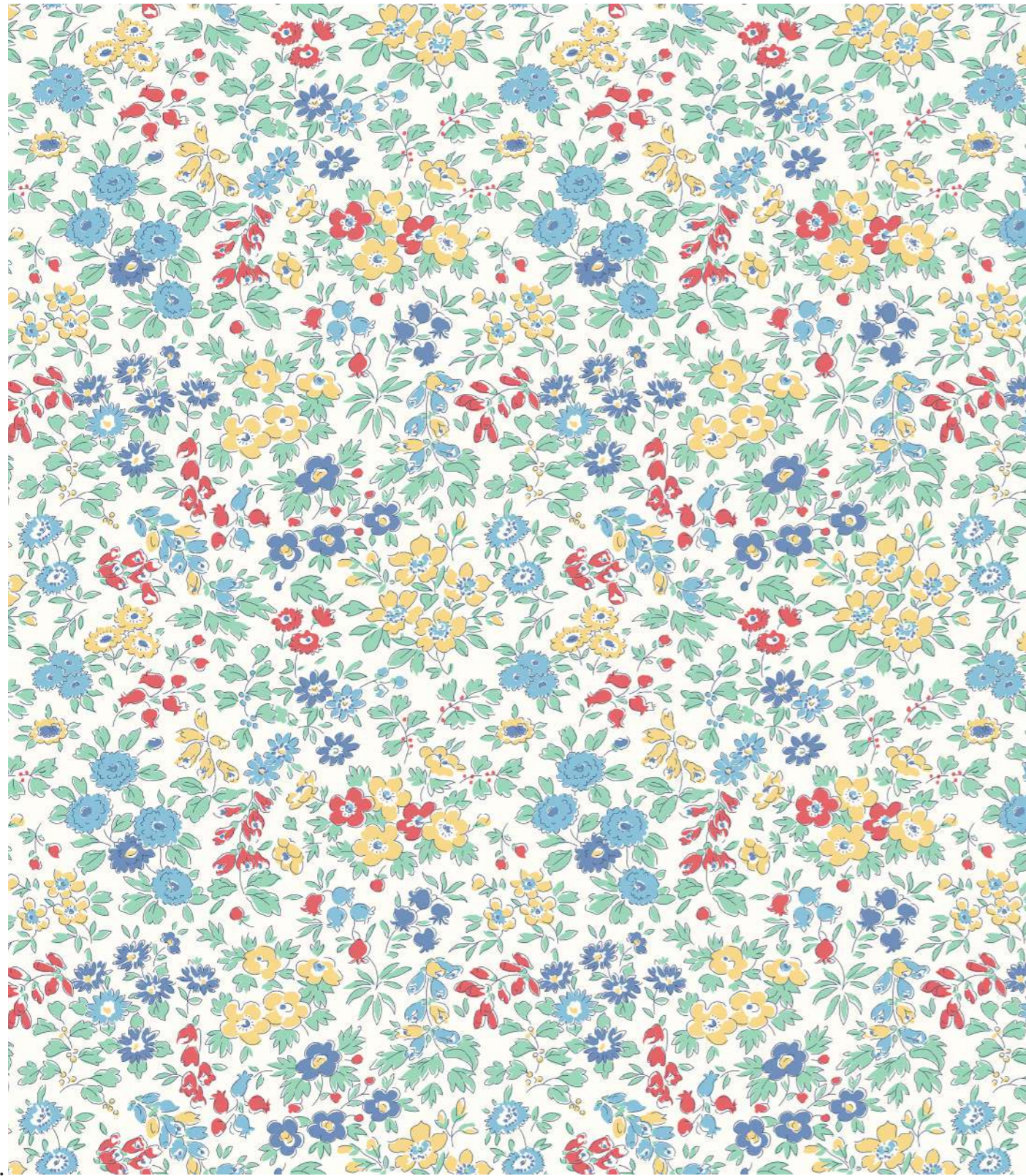
B.



C.

## COASTAL FLOWERS

The zesty and brightly coloured poppies in this multidirectional botanical are reminiscent of relaxed coastal gardens, bringing a sense of wilderness and freedom. A quintessential Liberty floral, it was originally created in 1933 and printed throughout most of the 1930s and 1940s.



A.



B.



C.

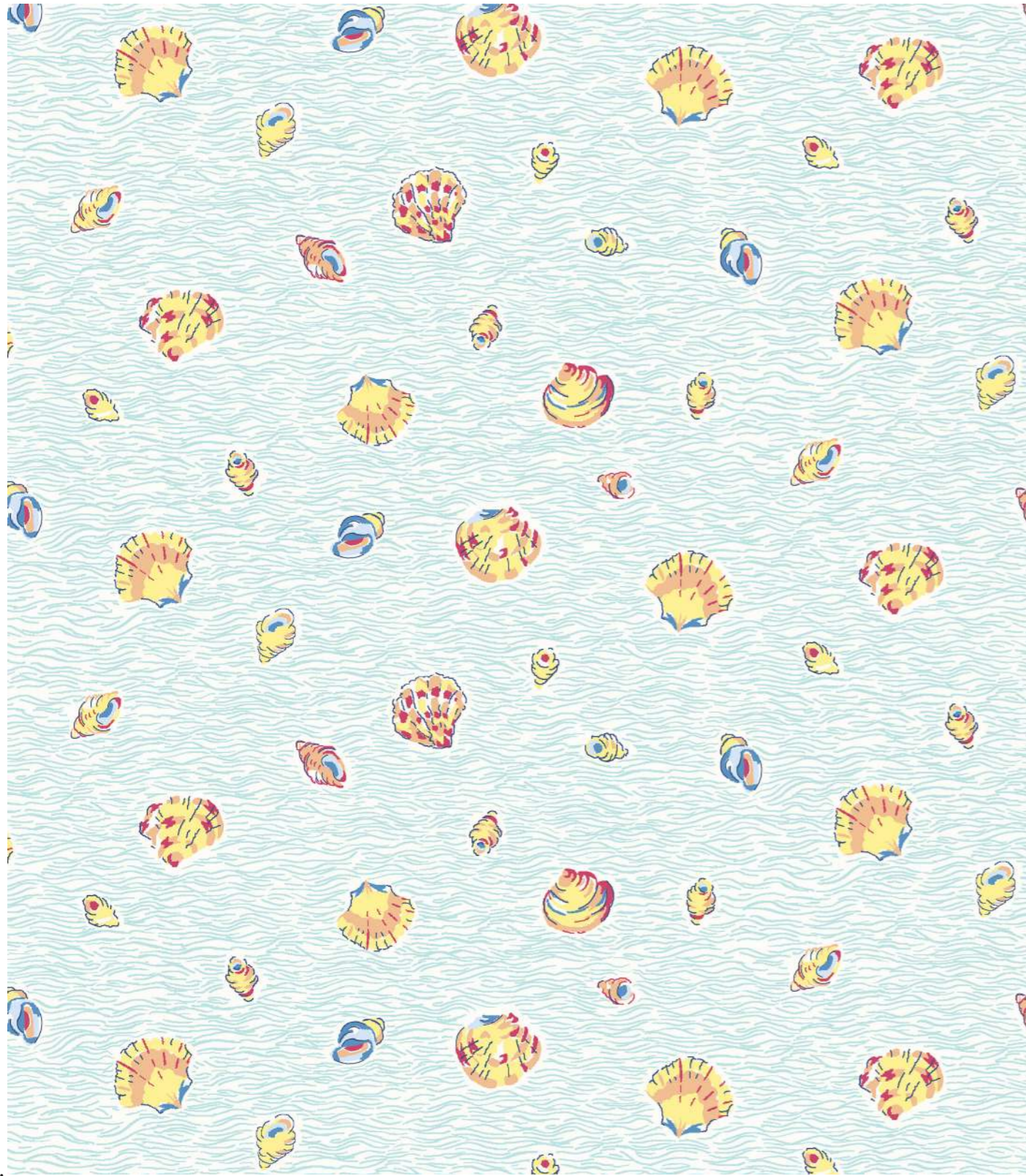
## SUMMER MEADOW

This very delicate and typical Liberty botanical pattern was based on a hand-painted artwork originally created in 1934. It features a medley of loosely outlined meadow flowers including primroses, daisies, foxgloves, and bell flowers.



## SUN PARASOL

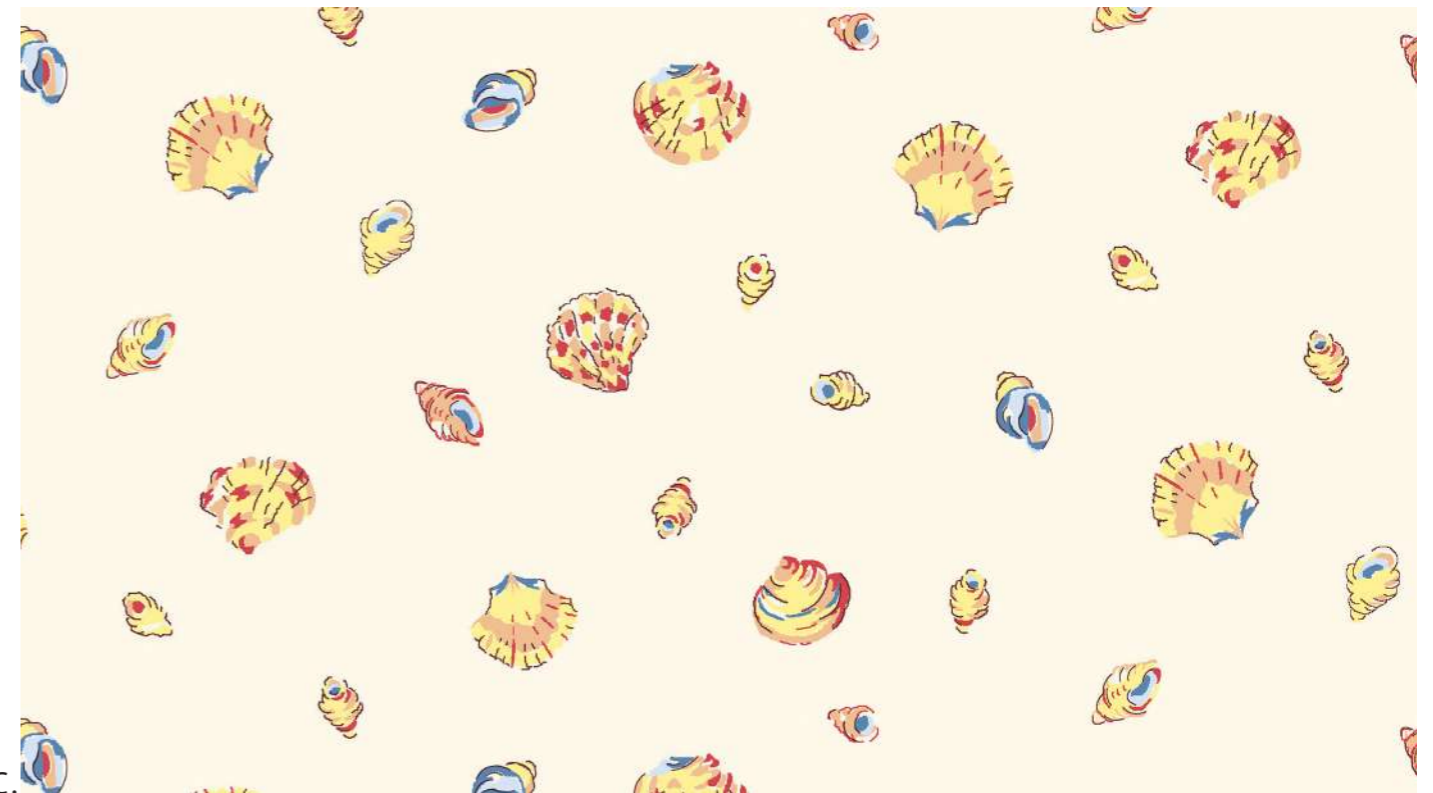
This cheerful and whimsical conversational was originally printed for Liberty in 1975. Featuring a dense overlapping assortment of Asian inspired parasols, this unique pattern amalgamates aspects of nostalgia, retro graphics, and twirls of bright colour.



A.



B.

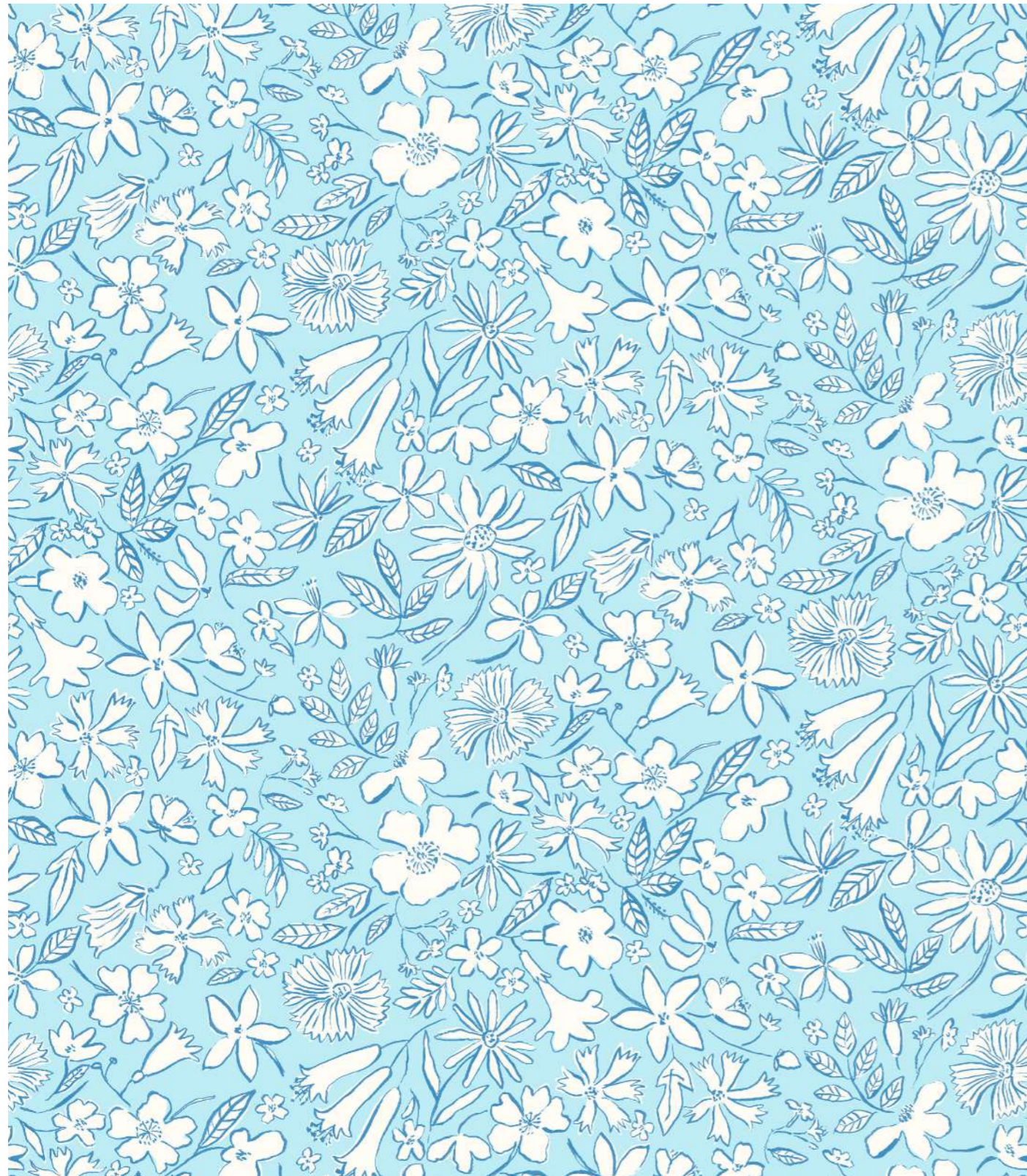


C.

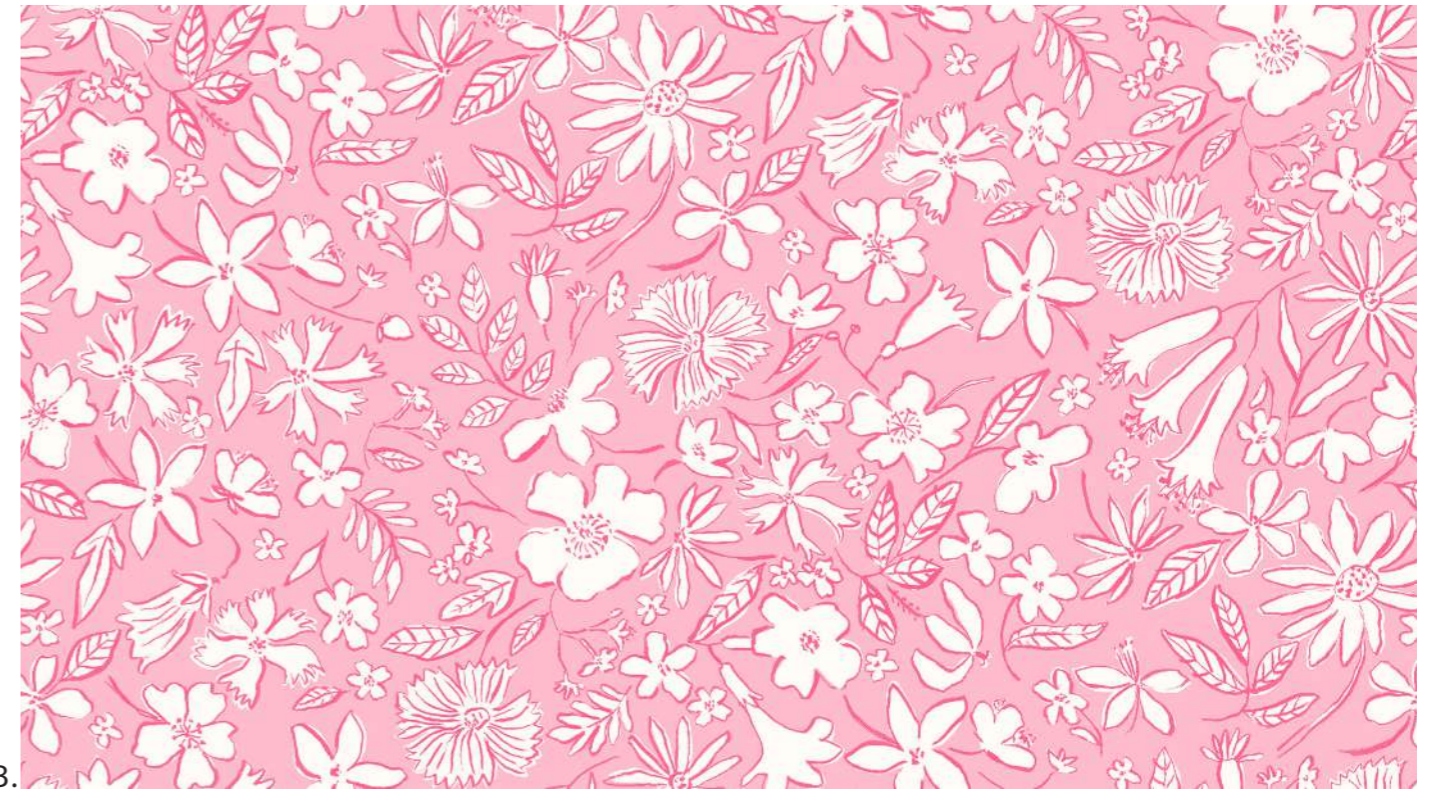
## SEA SHELLS

Inspired by Mother Nature's most abundant and endearing creations, this charming conversational pattern features delicately painted sea shells of all shapes and sizes. Reminiscent of breezy beach walks and precious seashore finds, the original design was printed as a Liberty fabric during the mid-1930s.





A.



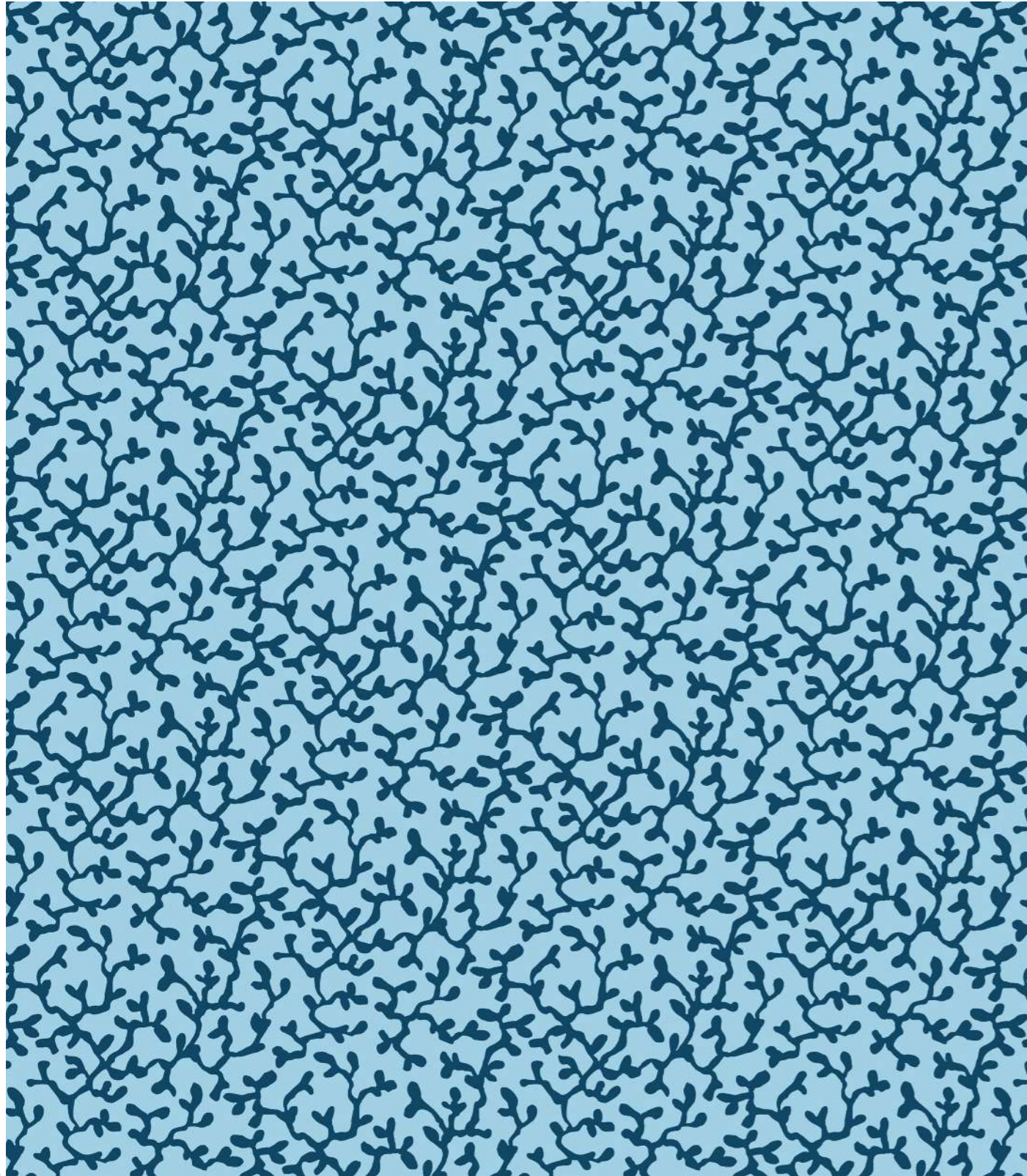
B.



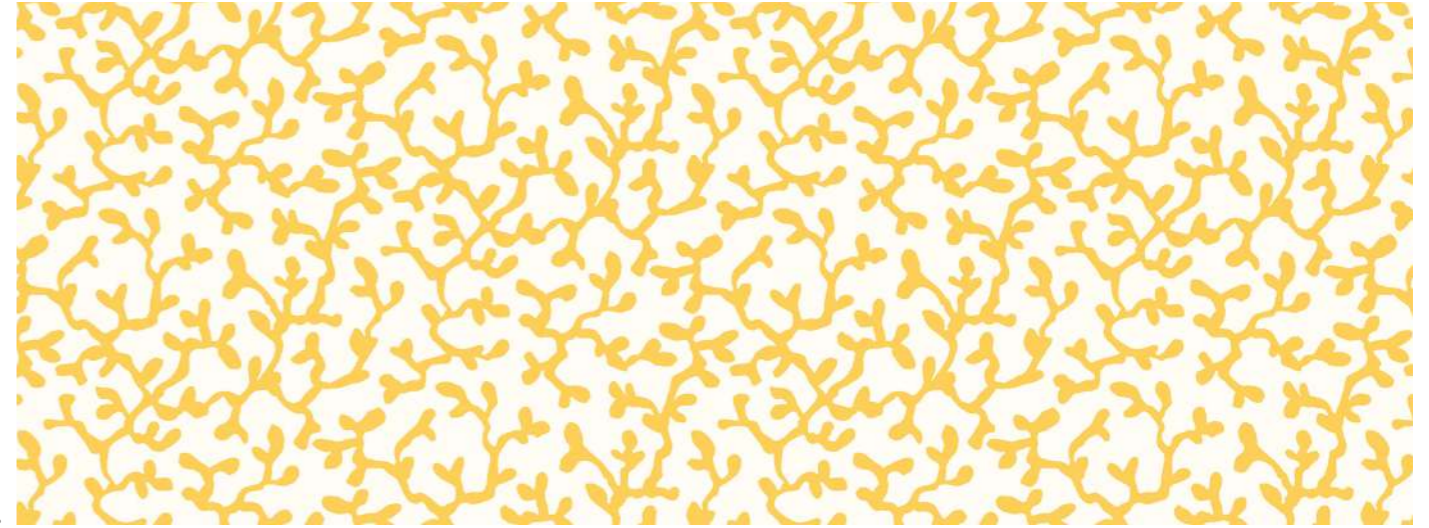
C.

## SUMMER SKETCH

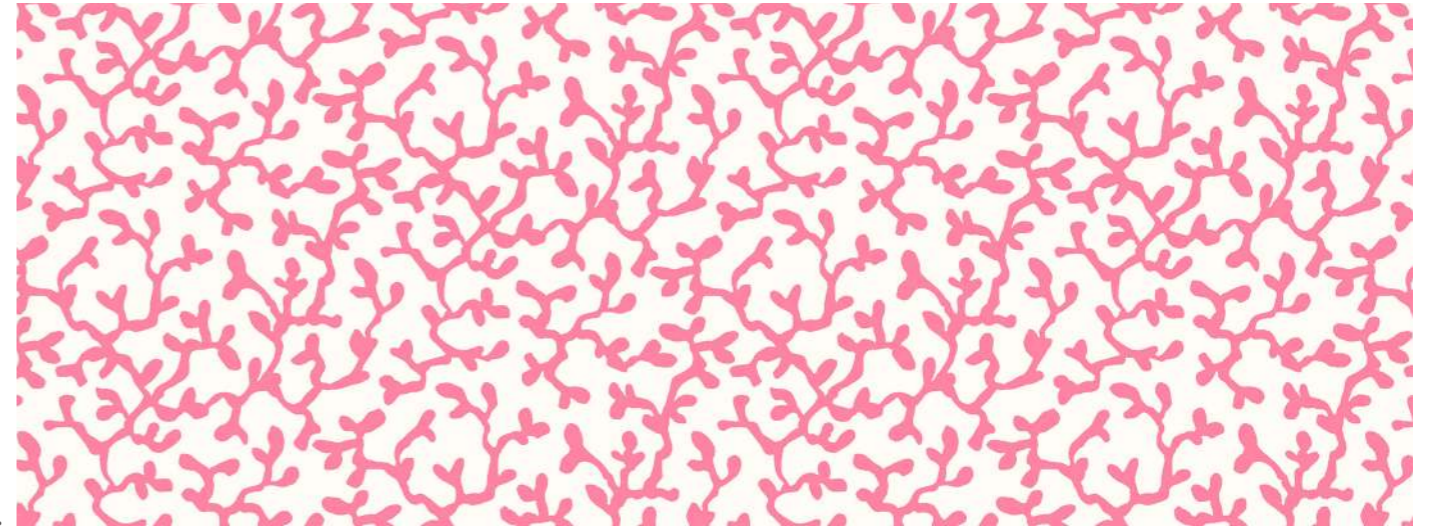
Drawing inspiration from sketches of wildflowers found in an English summer garden, Summer Sketch was hand painted in the Liberty studio. This tonal and multidirectional botanical showcases a myriad of graphic floral shapes, gently floating across the fabric.



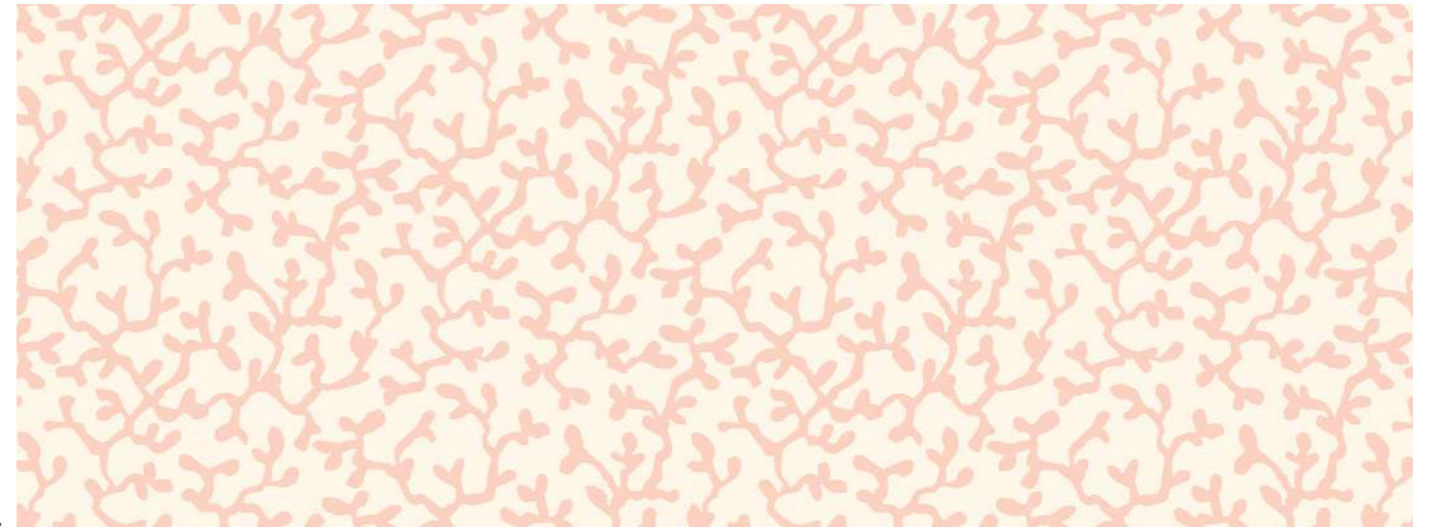
A.



B.



C.



D.

## CORALLIUM

The fine structure of this willow coral and the subtlety of its silhouette create an ethereal marine lace from the shallow waters. The soft monochrome nature of the design makes it an ideal coordinate to be used in quilting or craft projects.



A.



B.



C.



D.



E.

## SEALIFE

Hand painted by the Liberty studio in 1991 yet echoing the memorable style of graphic-inspired 1950s patterns, Sealife exudes effortless nautical charm. The eclectic pastiche of silhouette flowers, boats, fish, shells, and butterflies almost resembles linocut prints, while transporting us to a magical summer seascape.



A.



B.



C.

## SUNNY DAYS

Inspired by a traditional British seaside scene, this cute conversational includes stripy beach huts alternating between colourful parasols, bouncing beach balls and vibrant suns. A playful glimpse on the ever-fleeting British summer!



A.



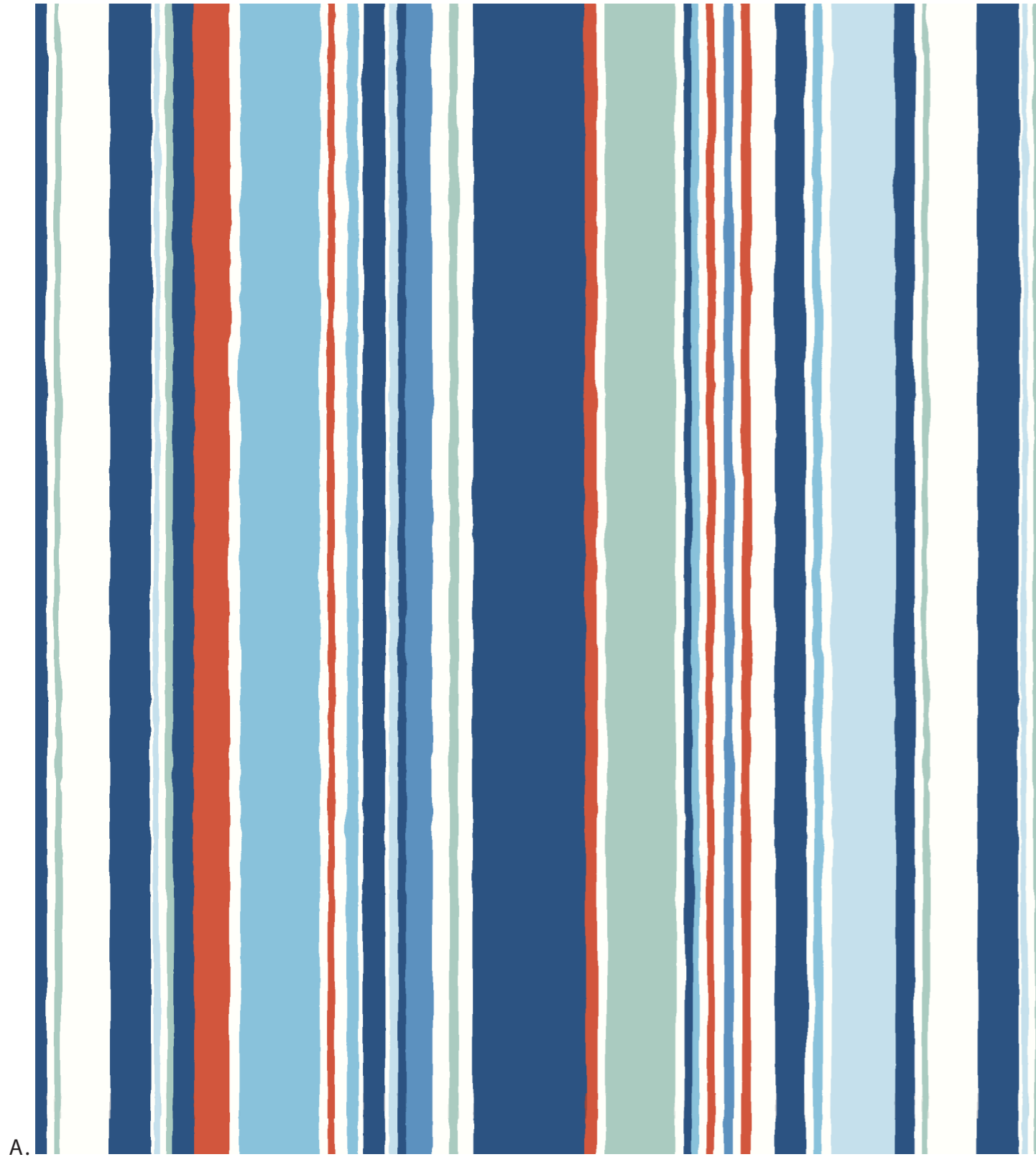
B.



C.

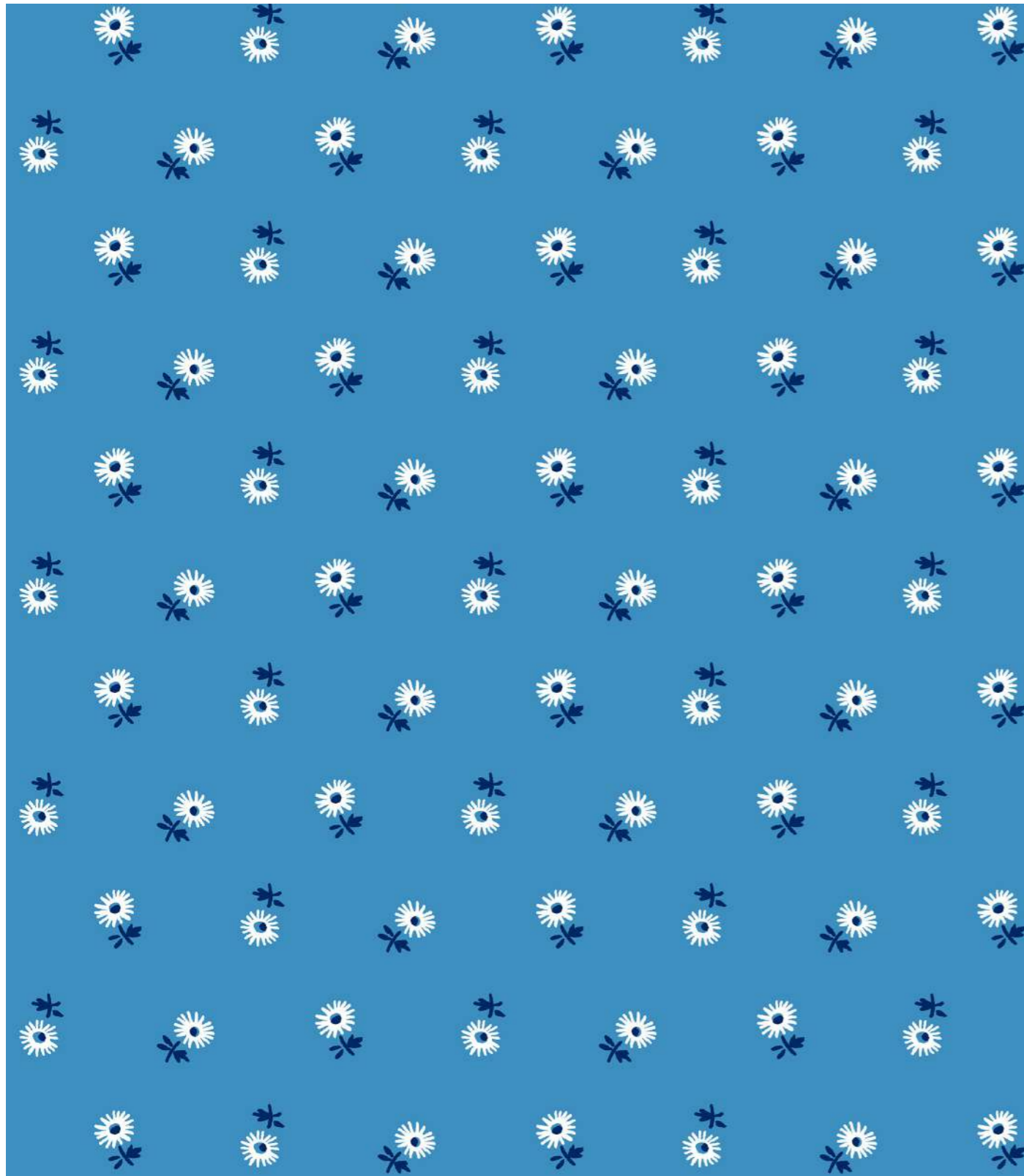
## WILDFLOWER POPPY

First created by Liberty in 1934, this romantic botanical was redrawn and recoloured in a fresh palette, exclusively for the Riviera quilting collection. The bright scattered poppies are woven across a myriad of wild daisies, reminiscent of blooming summer meadows.

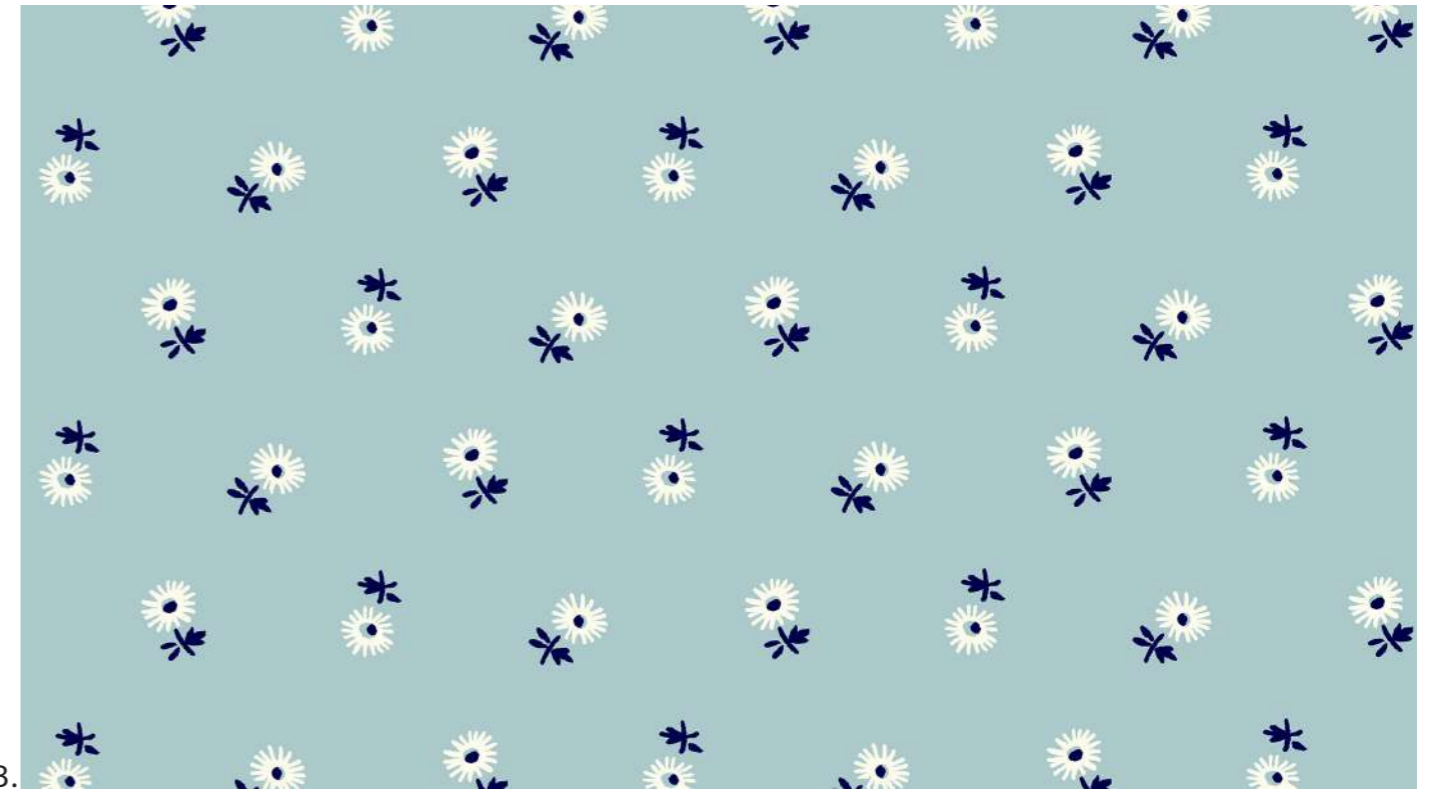


## DECKCHAIR STRIPE

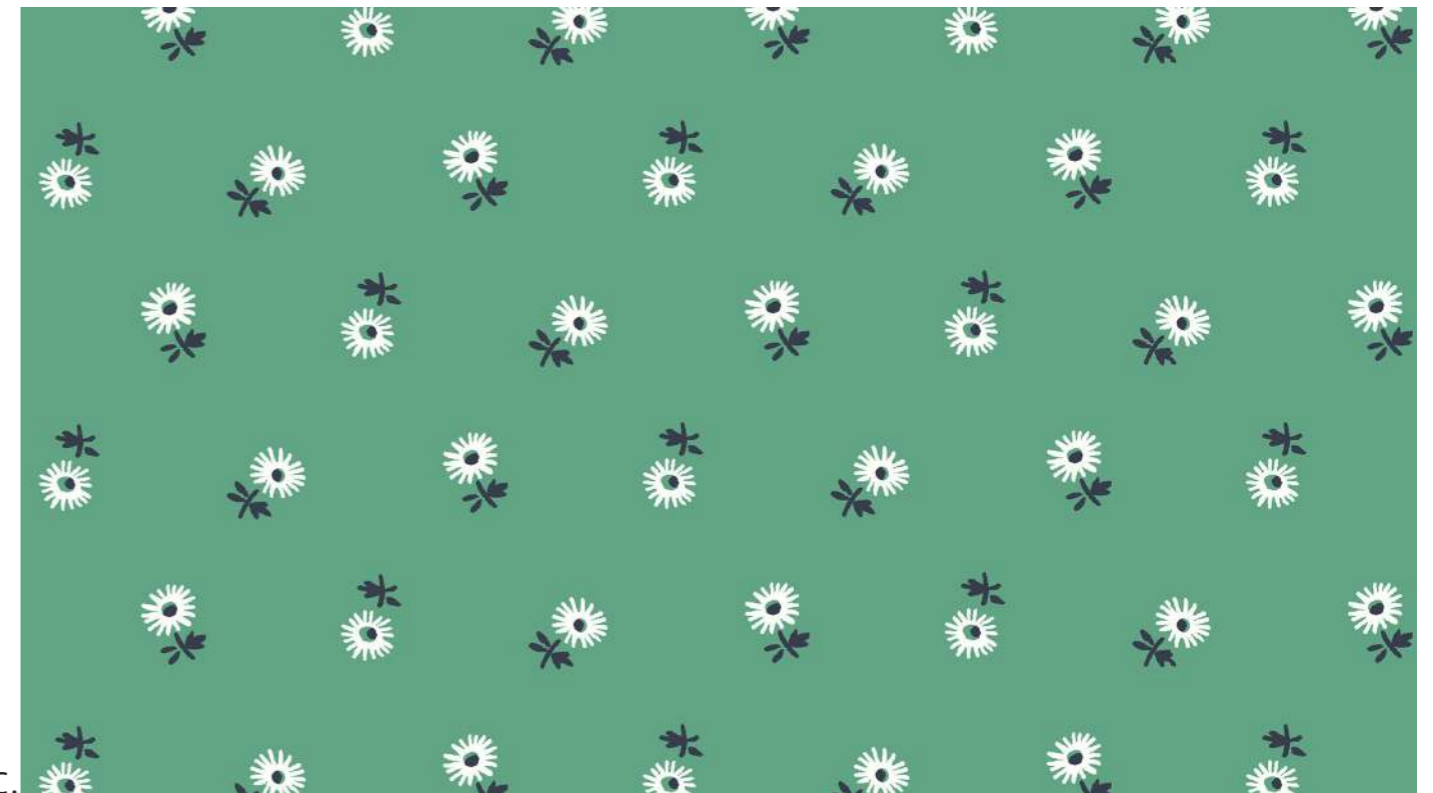
A nod to the traditional deckchair pattern, this design was originally printed as a Liberty Furnishing fabric during the early 1980s. Reduced in scale and recoloured in sunny beach hues, this delicate stripe is both timeless and versatile.



A.



B.



C.

## SUNSHINE DAISY

Discovered in one of Liberty's archive books from the 1940s, Sunshine Daisy offers a large proportion of ground space, accentuating the richness of plain colour. The tiny monochrome daisies with their pretty petals appear like scattered twinkling stars across the sky.



B.



C.

## SHELL GARDEN

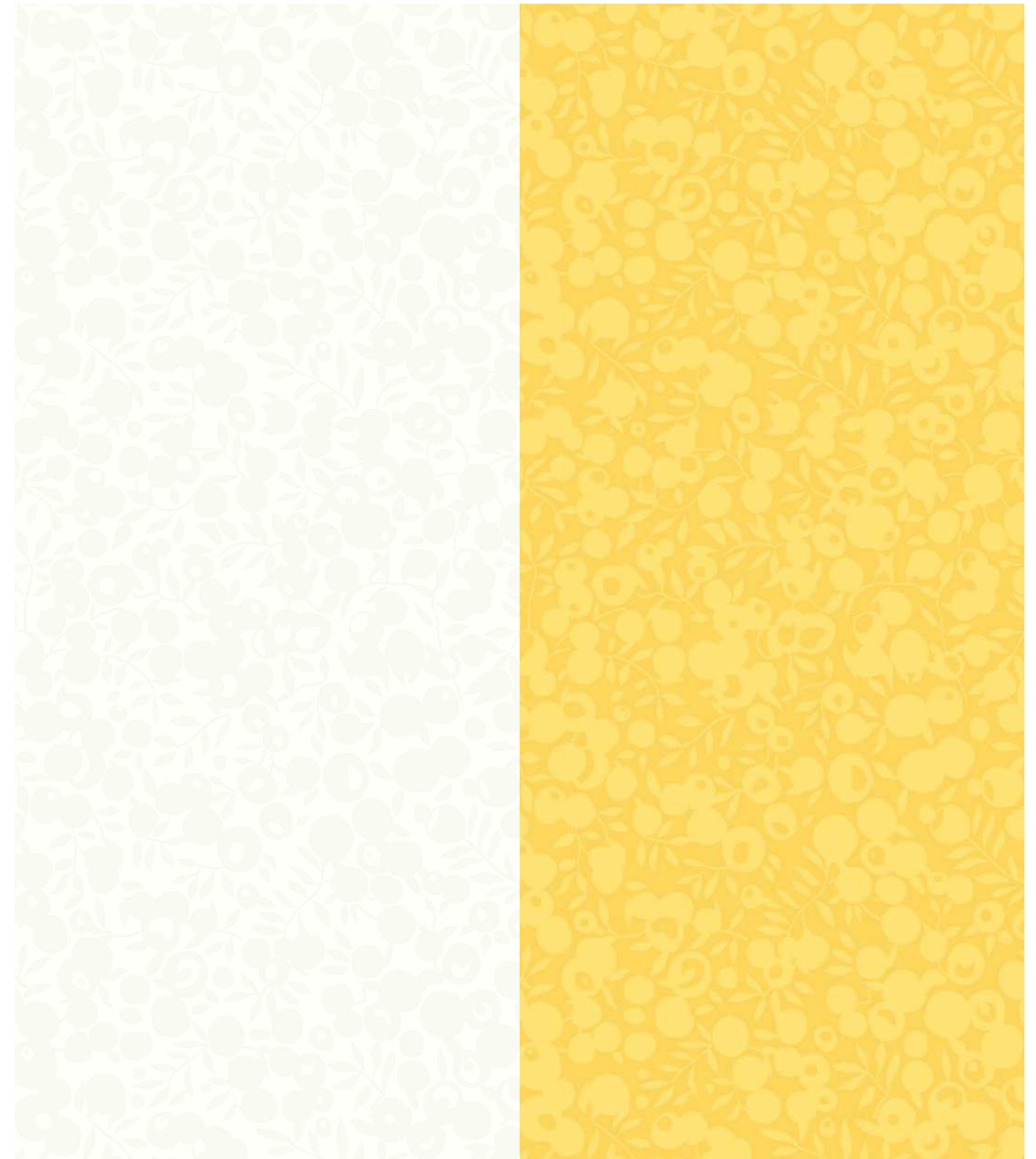
Featuring a variety of trailing botanicals and leafy sprigs, this charming pattern was hand painted and coloured in-house. Look closely within the dense floral layout to discover tiny shells, sea urchins and other aquatic blooms- creating a magnificent underwater garden.



## RECOMMENDED WILTSHIRE SHADOW BLENDERS

The Liberty Fabrics design team have selected a favourite print to become the perfect blender for quilting. Originally designed for Liberty Fabrics in 1933, Wiltshire has been reimagined into a two-colour shadow silhouette to become the perfect fabric blender. The tonal leaf and berry print is available in a multitude of colourways, designed to coordinate with our vast archive of Liberty prints for a seamless mix-and-match effect.

Printed onto soft Lasenby cotton, this base is suited for craft projects and classic patchwork quilting, the possibilities are as endless as your imagination.



**WHITE**

Item Code. 04775715Z

**LEMON**

Item Code. 04775681Z

**LIBERTY.**  
FABRICS

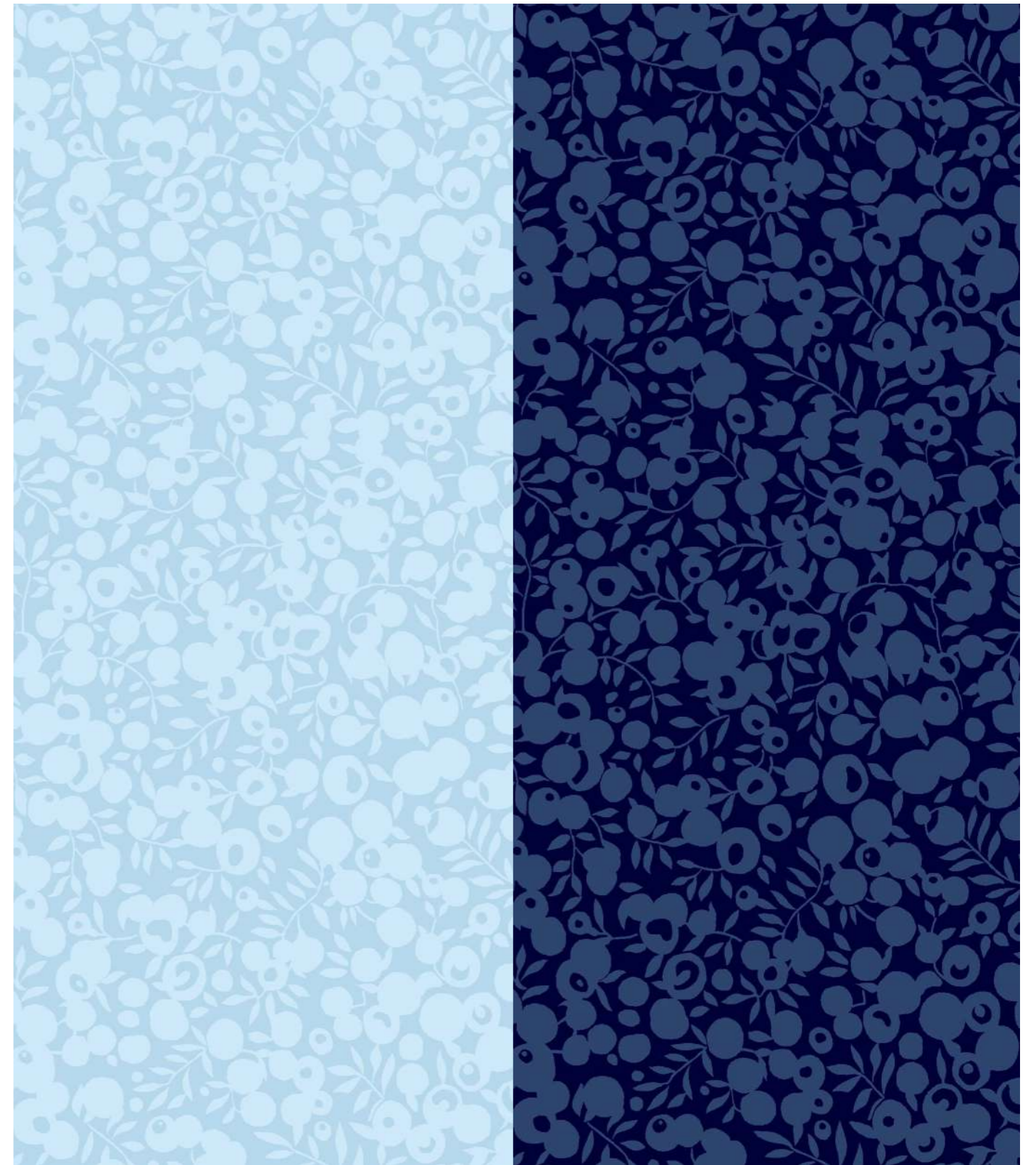


## OYSTER WHITE

Item Code. 04775678Z

## SHELL

Item Code. 04775685Z



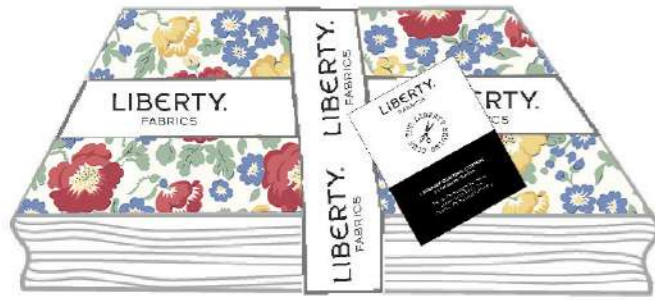
## ARCTIC

Item Code. 04775700Z

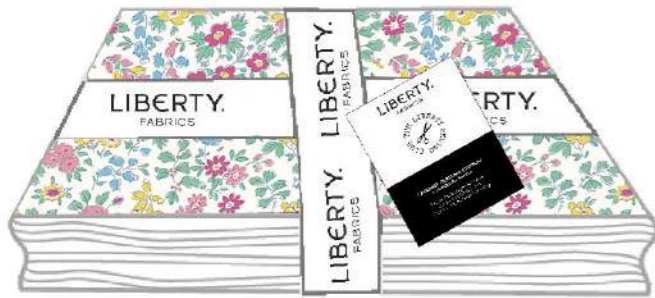
## MIDNIGHT INK

Item Code. 04775706Z

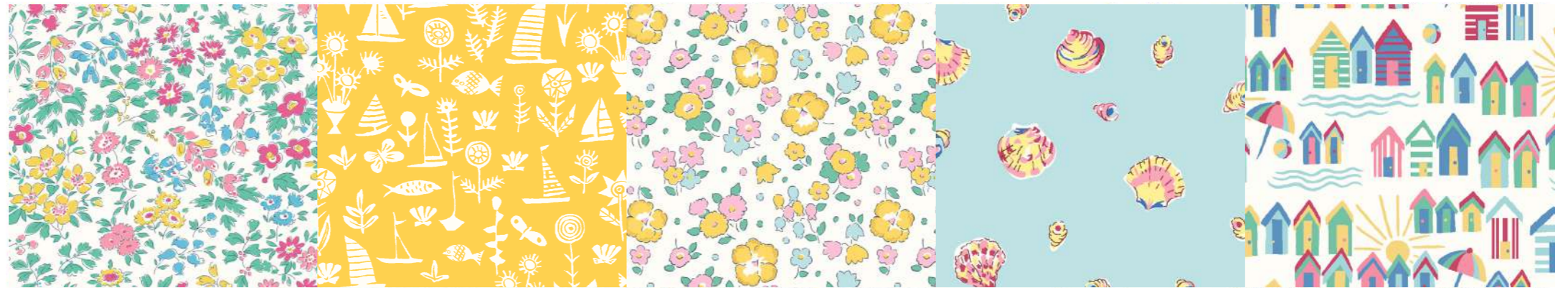
# THE RIVIERA COLLECTION PRE-CUT BUNDLES



0166FQ-RIVIER-A

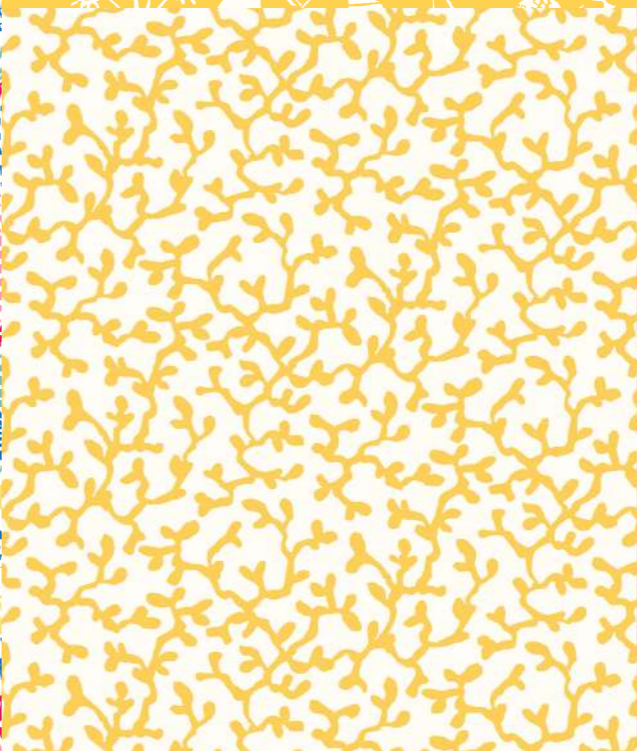
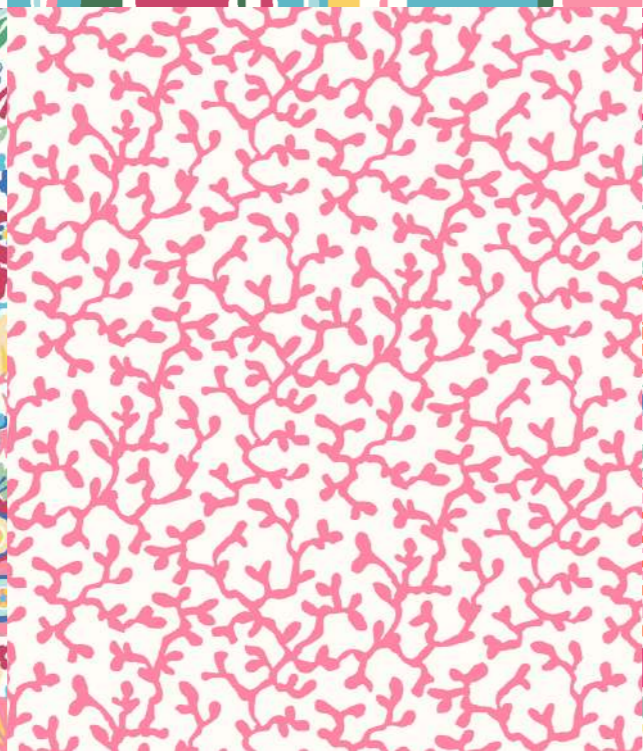
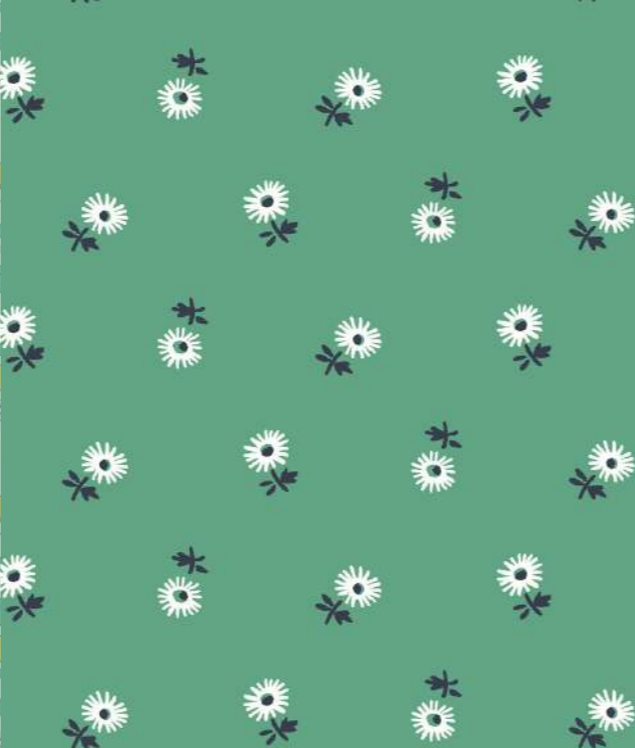


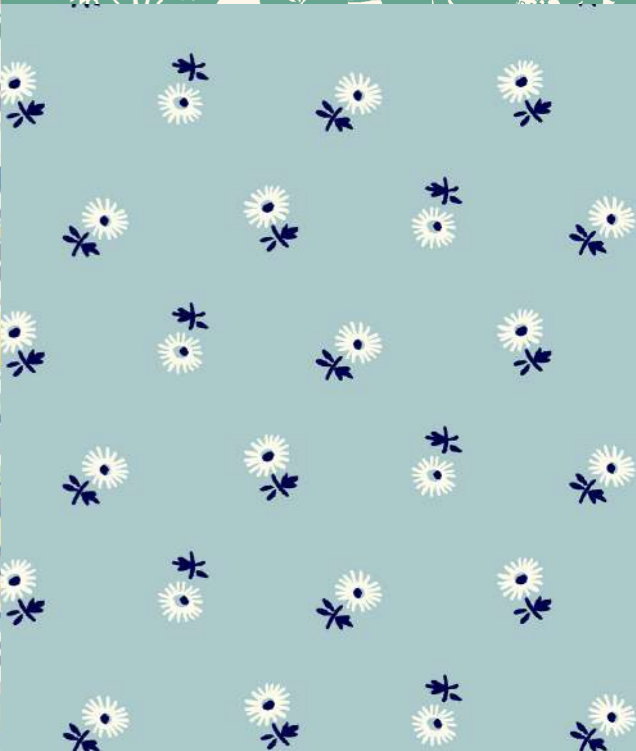
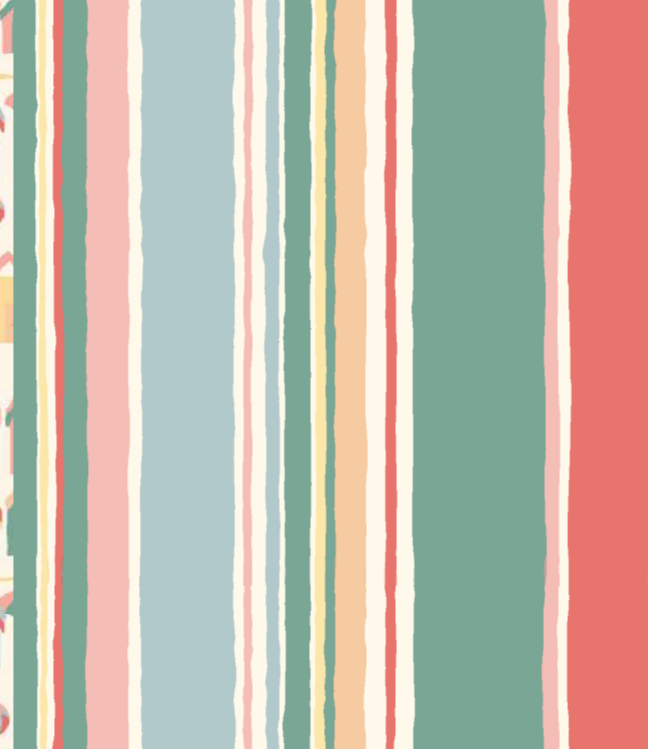
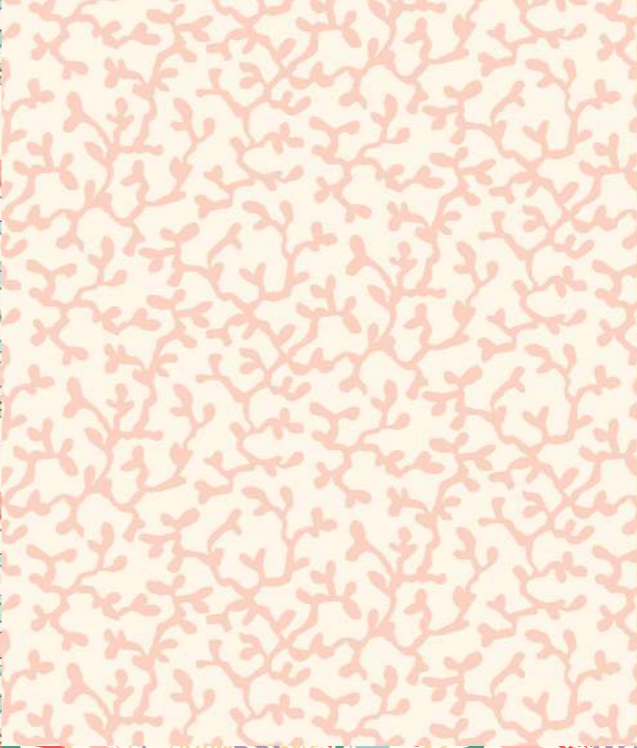
0166FQ-RIVIER-B

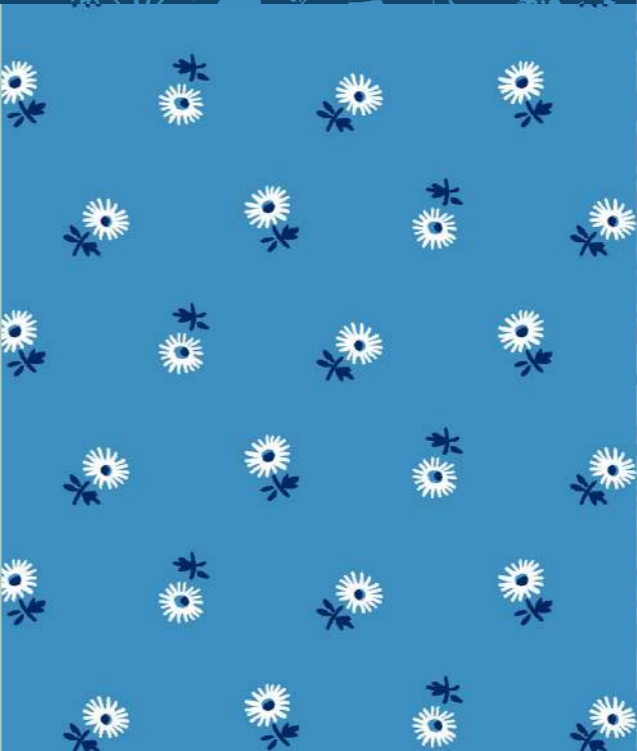
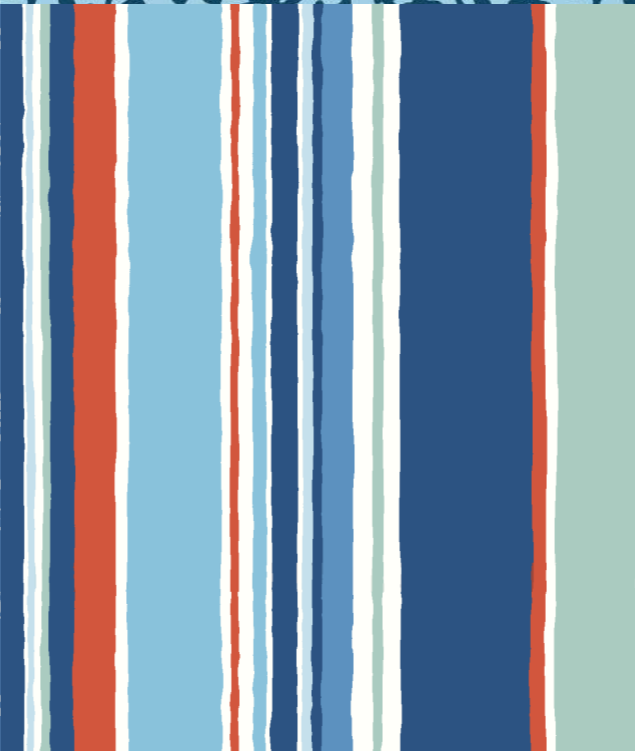
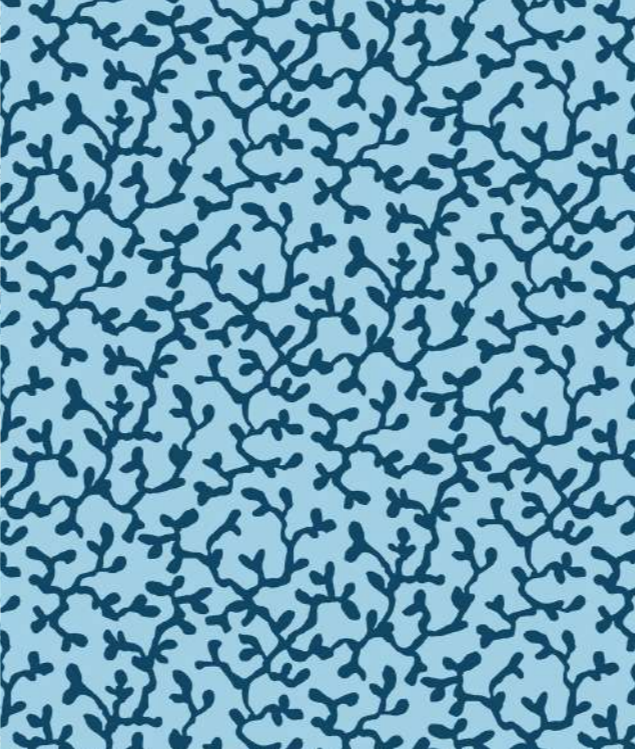
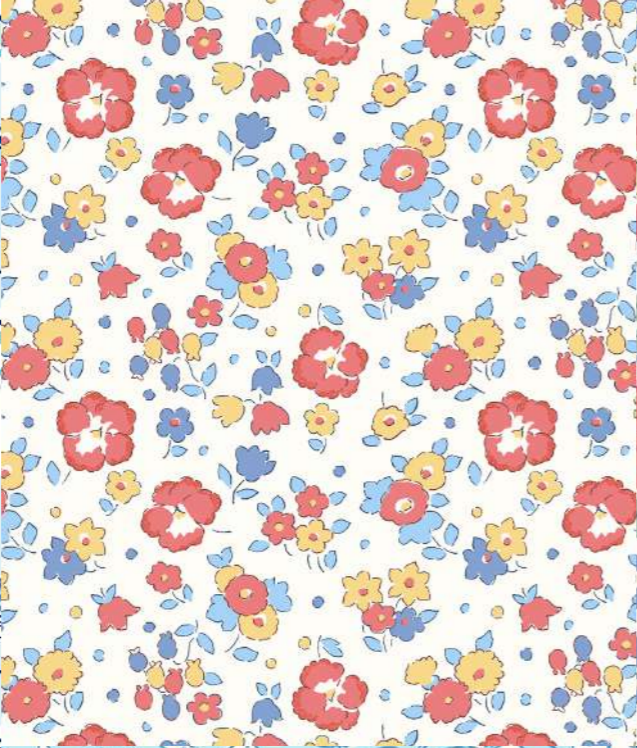


0166FQ-RIVIER-C











# THE RIVIERA COLLECTION

**LIBERTY.**  
FABRICS