

michael|miller FABRICS

# JULY 2023 COLLECTIONS



**"MOTHER'S  
FANCY"**  
BY BRENDA  
PLASTER



michael miller FABRICS

## CONTENTS:

- 03 - Ah, Wilderness
- 05 - Happy Trails
- 07 - City of London
- 09 - Game On by Louise Nisbet
- 11 - Hampton Court
- 15 - Precious Metals
- 17 - Coastal Living
- 19 - Garden Variety
- 21 - Notting Hill
- 23 - Patina
- 25 - Wisteria Lane
- 27 - Baby Love by Tracy Cottingham
- 29 - I Heart Kitsch by Aimee Stewart
- 31 - Sea World by Mark Gregory
- 35 - Yummy Scummy Day by Belle and Boo Out to Play

\*Images are not true to scale\*





# Nighttime by the River Quilt

by Bea Lee

LEVEL: BEGINNER | SIZE: 69"W X 81"H

Commercial Pattern available for purchase at  
[www.beaquilter.com](http://www.beaquilter.com)

MADE WITH  
**PATINA**  
FQ0355

SEE PAGE  
23 FOR FULL PATINA  
COLLECTION







SHIPPING DECEMBER 2023

16 NEW SKUS



SCAN TO ORDER  
AH, WILDERNESS

Enter the wooded world of bears, deer and wolves. "Ah, Wilderness" is the perfect collection to create a quilt for that cabin in the woods. Patchwork, plaids and woody textures will have you feeling like you're in the Adirondacks or deep in the Rocky Mountains.

CAS0395 Ah, Wilderness 10 yds of full collection  
CAS0396 Ah, Wilderness 15 yds of full collection



DCX11496 CREAM  
ANIMAL HABITAT



DCX11498 MULTI  
CALL OF THE WILD



DCX11495 MULTI  
NATURE PRESERVE



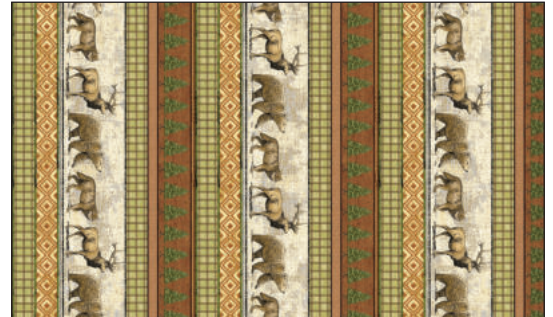
CX11499 BEIGE  
WILDLIFE REFUGE



CX11499 BROWN  
WILDLIFE REFUGE



CX11499 GOLD  
WILDLIFE REFUGE



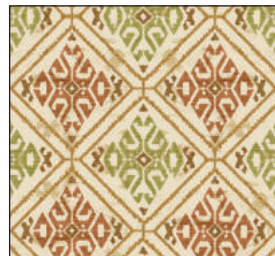
DCX11497 MULTI  
OUTWARD BOUND



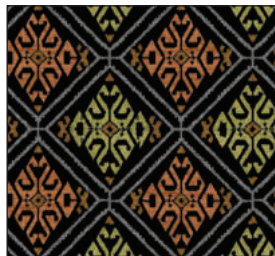
CX11500 CREAM  
WHISPERS



CX11500 GRAY  
WHISPERS



CX11501 BEIGE  
ADIRONDACK STYLE



CX11501 BLACK  
ADIRONDACK STYLE



CX11501 BROWN  
ADIRONDACK STYLE



CX11502 GOLD  
WOODSY TEXTURE



CX11503 BROWN  
RUSTIC PLAID




CX11503 GREEN  
RUSTIC PLAID



CX11503 SAGE  
RUSTIC PLAID





**Pine Creek Lodge Quilt**

by Christine Stainbrook  
of Project House 360


SIZE: 82"W X 95"H

LEVEL: INTERMEDIATE

FREE PATTERN AVAILABLE AT  
[WWW.MICHAELMILLERFABRICS.COM](http://WWW.MICHAELMILLERFABRICS.COM)



SCAN FOR  
KITTING INFO



**Fussy Cut Your Stars Quilt**

by The Fabric Addict

SIZE: 65"W X 78 1/2"H

LEVEL: CONFIDENT BEGINNER

COMMERCIAL PATTERN  
AVAILABLE AT  
[WWW.FABRICADDICT.NET](http://WWW.FABRICADDICT.NET)  
& CHECKER DISTRIBUTORS



SCAN FOR  
KITTING INFO







### SCAN TO ORDER HAPPY TRAILS

Time for a rodeo round up! We're back with an iconic Michael Miller collection. These adorable cowboys and cowgirls are working hard on the ranch. The cowhide print and calico paisley combine with the characters to create a great quilt or apparel project.

CAS0381 Happy Trails 10 yds of full collection  
CAS0382 Happy Trails 15 yds of full collection

michael miller FABRICS

\*Images are not true to scale\*



SHIPPING DECEMBER 2023

### 16 NEW SKUS



CX11506 CREAM  
RODEO ROUND UP



CX11507 NAVY  
COWHAND GEAR



CX11507 RED  
COWHAND GEAR



CX11507 CREAM  
COWHAND GEAR



CX11513 MULTI  
L'IL COWHANDS



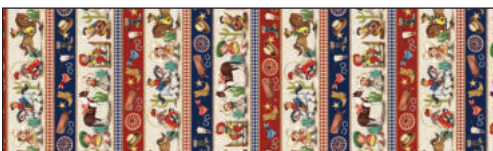
CX11508 RED  
WHOA, NELLIE!



CX11508 NAVY  
WHOA, NELLIE!



CX11508 CREAM  
WHOA, NELLIE!



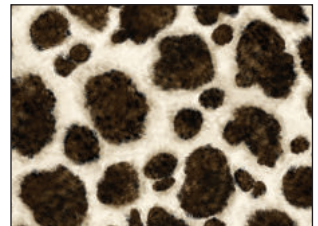
CX11512 MULTI  
PRAIRIE STRIPE



CX11510 CREAM  
CALICO PAISLEY



CX11510 RED  
CALICO PAISLEY



CX11509 BROWN  
COWHIDE



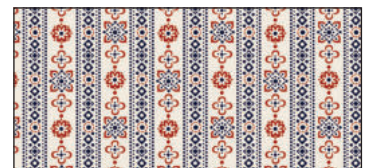
CX11514 NAVY  
BUFFALO PLAID



CX11514 RED  
BUFFALO PLAID



CX11511 BLUE  
CALICO STRIPE



CX11514 CREAM  
CALICO STRIPE



## Criss Crossroads Quilt

by Everyday Stitches

SIZE: 58"W X 82"H

LEVEL: INTERMEDIATE

COMMERCIAL PATTERN AVAILABLE  
AT [WWW.EVERYDAYSTITCHES.COM](http://WWW.EVERYDAYSTITCHES.COM),  
CHECKER DISTRIBUTORS & BREWER



SCAN FOR  
KITTING INFO



## Lil' Rodeo Quilt

by Christine Stainbrook  
of Project House 360

SIZE: 36"W X 42"H

LEVEL: CONFIDENT BEGINNER

FREE PATTERN AVAILABLE AT  
[WWW.MICHAELMILLERFABRICS.COM](http://WWW.MICHAELMILLERFABRICS.COM)



SCAN FOR  
KITTING INFO



michael miller FABRICS

\*Images are not true to scale\*

# City of London



SCAN TO ORDER  
CITY OF LONDON

Hop on a double decker bus and explore the vibrant "City of London." This collection features all the famous icons of London such as Big Ben, London Eye, Westminster Abbey and many more. All of London's famed sites are at your fingertips with this collection.

SHIPPING JANUARY 2024

14 NEW SKUS

CAS0401 City of London 10 yds of full collection

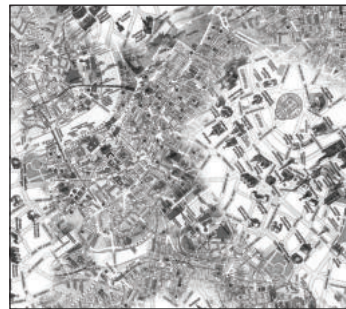
CAS0402 City of London 15 yds of full collection



DCX11667 MULTI  
CITY OF LONDON



DCX11669 MULTI  
CHANGING OF THE GUARD



DCX11668 SILVER  
LONDON MAP



DCX11670 BLUE  
CITY LIGHTS



DCX11666 MULTI  
CITY OF LONDON BORDER



DCX11672 BRICK  
CITY STREETS



DCX11674 ROYAL  
UNION JACK



DCX11673 BRICK  
RED PHONE BOX



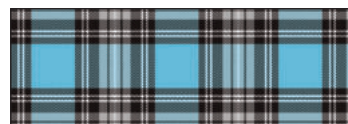
DCX11670 SILVER  
CITY LIGHTS



DCX11671 MULTI  
LONDON CITY STRIPE



CX11675 SILVER  
WINDSOR PLAID



CX11675 BLUE  
WINDSOR PLAID



CX11675 RED  
WINDSOR PLAID



CX11675 PEWTER  
WINDSOR PLAID





**Calm Quilt**  
 by Tammy Silvers of Tamarinis  
 SIZE: 40"W X 60"H  
 LEVEL: INTERMEDIATE  
 COMMERCIAL PATTERN  
 AVAILABLE AT  
 WWW.TAMARINIS.COM



SCAN FOR  
 KITTING INFO



**Merry Ole London Quilt**  
 by Natalie Crabtree of  
 Crabtree Arts Collective  
 SIZE: 56"W X 62"H  
 LEVEL: BEGINNER

FREE PATTERN AVAILABLE AT  
 WWW.MICHAELMILLERFABRICS.COM



SCAN FOR  
 KITTING INFO



\*Images are not true to scale\*

michael miller FABRICS

SCAN TO ORDER  
GAME ON



CAS0377 Game On 10 yds of full collection  
CAS0378 Game On 15 yds of full collection

Game night? Game on! A striking collection of classic games we all know and love, from dominoes & chess, to checkers & billiards. Accompanied by the perfect drinks and snacks for the occasion, this collection will make your games night a sure winner!

SHIPPING JANUARY 2024

16 NEW SKUS



DC11545 BLACK CHESSBOARD



DC11546 BLACK CHESSMEN



DC11548 RED PLAYING CARDS



DC11548 BLACK PLAYING CARDS



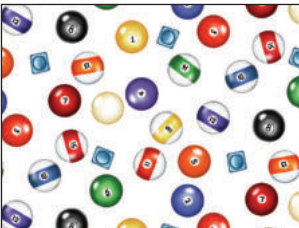
DC11556 MULTI GAME NIGHT PANEL



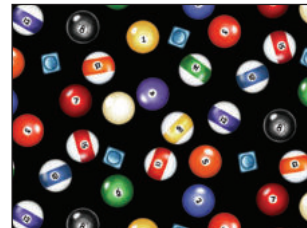
DC11557 MULTI BOARD GAMES



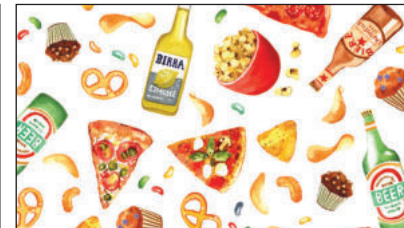
DC11549 WHITE FOLLOW SUIT



DC11555 WHITE BILLIARD BALLS



DC11555 BLACK BILLIARD BALLS



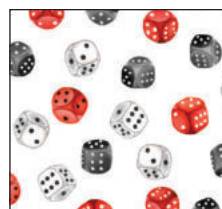
DC11554 WHITE GAME NIGHT SNACKS



DC11554 BLACK GAME NIGHT SNACKS



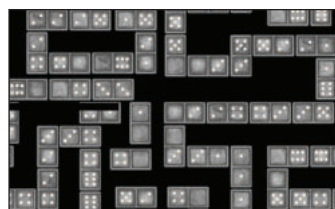
DC11550 BLACK ROLL WITH IT



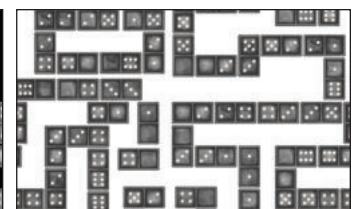
DC11550 WHITE ROLL WITH IT



DC11552 BLACK WOODEN CHECKERS



DC11551 BLACK DOMINO THEORY



DC11551 WHITE DOMINO THEORY





SCAN FOR  
KITTING INFO

### Let's Play Quilt

by Christine Stainbrook  
of Project House 360

SIZE: 58"W X 56"H

LEVEL: CONFIDENT BEGINNER

FREE PATTERN AVAILABLE AT  
[WWW.MICHAELMILLERFABRICS.COM](http://WWW.MICHAELMILLERFABRICS.COM)



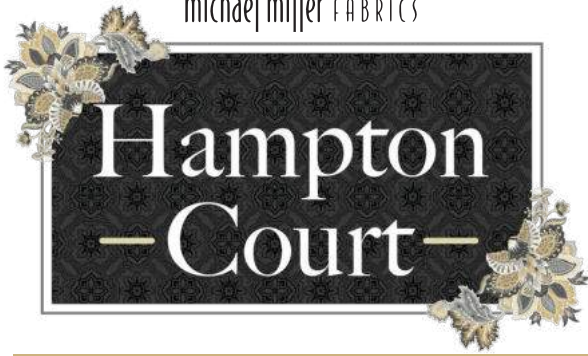
Block Talk Quilt  
by Swirly Girls Design  
SIZE: 48"W X 62"H  
LEVEL: CONFIDENT BEGINNER

COMMERCIAL PATTERN  
AVAILABLE AT  
[WWW.SWIRLYGIRLSDESIGN.COM](http://WWW.SWIRLYGIRLSDESIGN.COM)  
& CHECKER DISTRIBUTORS

SCAN FOR  
KITTING INFO







**SCAN TO ORDER  
HAMPTON COURT**

This classic must-have collection comes in 2 color ways: Black & Cream, and Nite & Tan. These traditional Jacobean, stripes, mosaics and textures combine to make a beautiful quilt.

SHIPPING JANUARY 2024

**14 NEW SKUS**

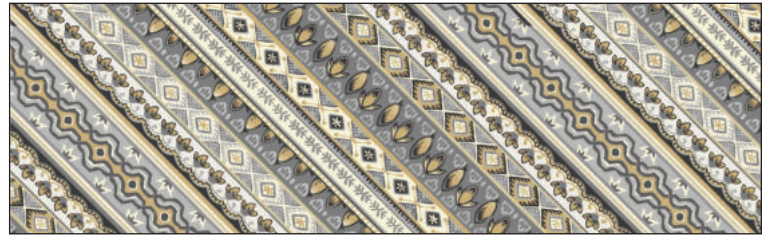
CAS0387 Hampton Court Black & Cream 10 yds of full collection  
CAS0388 Hampton Court Black & Cream 15 yds of full collection



DCX11632 BLACK  
JACOBEOAN BLOSSOM



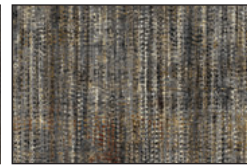
DCX11632 CREAM  
JACOBEOAN BLOSSOM



CX11633 GRAY  
CHELSEA STRIPE



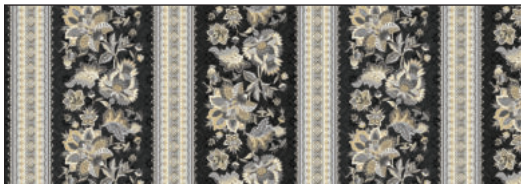
CX11638 COIN  
BEADED TEXTURE



CX11638 GRAY  
BEADED TEXTURE



CX11638 KHAKI  
BEADED TEXTURE



DCX11635 BLACK  
GOTHIC STRIPE



CX11634 GRAY  
MOSAIC TILES



CX11636 BLACK  
MOSAIC SILHOUETTE



CX11637 BLACK  
TUDOR COURT



CX11639 GRAY  
JACOBEOAN PATCHWORK



CX11636 CREAM  
MOSAIC SILHOUETTE



CX11637 CREAM  
TUDOR COURT



CX11636 GRAY  
MOSAIC SILHOUETTE



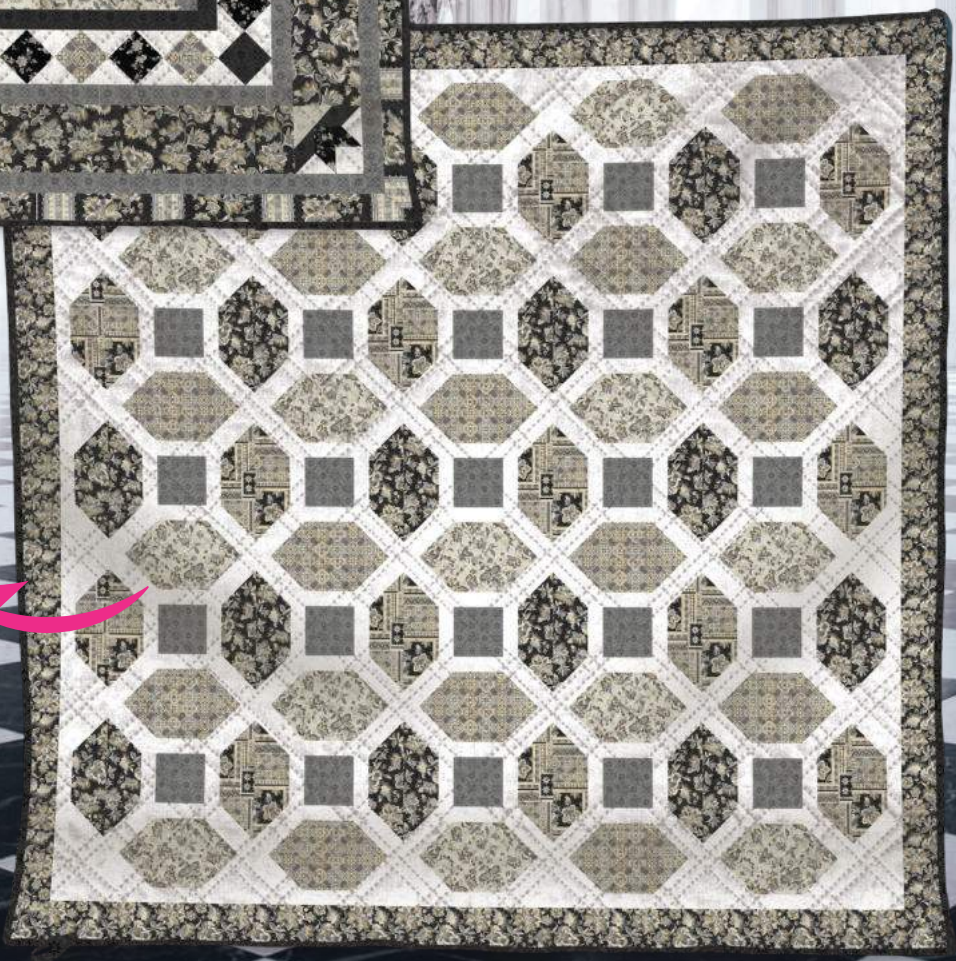


**Queen's Romance Quilt**  
by Marsha Evans Moore  
SIZE: 69"W X 69"H  
LEVEL: INTERMEDIATE



**SCAN FOR  
KITTING INFO**

FREE PATTERNS AVAILABLE AT  
[WWW.MICHAELMILLERFABRICS.COM](http://WWW.MICHAELMILLERFABRICS.COM)



**Crown Jewel Quilt**  
by Chrisine Stainbrook  
of Project House 360  
SIZE: 93"W X 93"H  
LEVEL: CONFIDENT BEGINNER



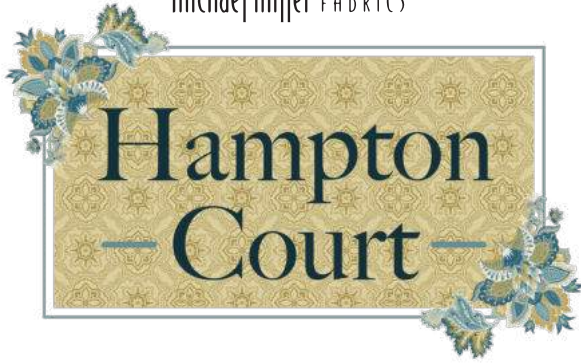
**SCAN FOR  
KITTING INFO**

FREE PATTERNS AVAILABLE AT  
[WWW.MICHAELMILLERFABRICS.COM](http://WWW.MICHAELMILLERFABRICS.COM)



\*Images are not true to scale\*

michael miller FABRICS



SCAN TO ORDER  
HAMPTON COURT

SHIPPING JANUARY 2024

### 14 NEW SKUS

CAS0389 Hampton Court Nite & Tan 10 yds of full collection  
CAS0390 Hampton Court Nite & Tan 15 yds of full collection



DCX11632 NITE  
JACOBAN BLOSSOM



DCX11632 TAN  
JACOBAN BLOSSOM



CX11633 BLUE  
CHELSEA STRIPE



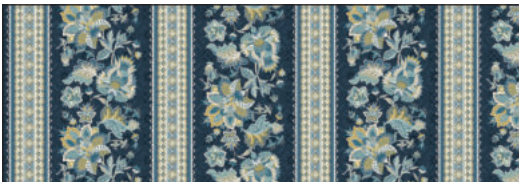
CX11638 BLUE  
BEADED TEXTURE



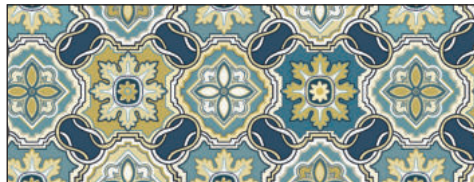
CX11638 GLASS  
BEADED TEXTURE



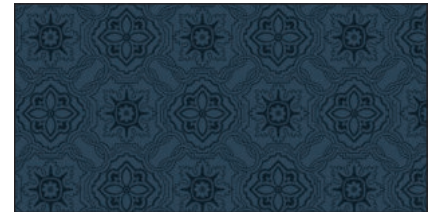
CX11638 NITE  
BEADED TEXTURE



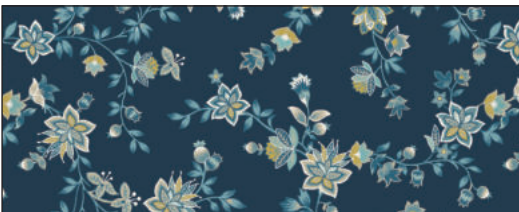
DCX11635 NITE  
GOTHIC STRIPE



CX11634 BLUE  
MOSAIC TILES



CX11636 NITE  
MOSAIC SILHOUETTE



CX11637 NITE  
TUDOR COURT



CX11639 BLUE  
JACOBAN PATCHWORK



CX11636 GOLD  
MOSAIC SILHOUETTE



CX11637 TAN  
TUDOR COURT



CX11636 TAN  
MOSAIC SILHOUETTE





**Queen's Romance Quilt**  
by Marsha Evans Moore  
SIZE: 69"W X 69"H  
LEVEL: INTERMEDIATE



**SCAN FOR  
KITTING INFO**

FREE PATTERN AVAILABLE AT  
[WWW.MICHAELMILLERFABRICS.COM](http://WWW.MICHAELMILLERFABRICS.COM)

**Leading Edge Quilt**  
by Canuck Quilter Designs  
SIZE: 59 1/4"W X 72 1/2"H  
LEVEL: CONFIDENT BEGINNER



**SCAN FOR  
KITTING INFO**

COMMERCIAL PATTERN AVAILABLE AT  
[WWW.CANUCKQUILTERDESIGNS.COM](http://WWW.CANUCKQUILTERDESIGNS.COM)  
OR CHECKER DISTRIBUTORS





michael miller FABRICS

# PRECIOUS METALS

SHIPPING JANUARY 2024

## 14 NEW SKUS

CAS0391 Precious Metals 10 yds of full collection  
CAS0392 Precious Metals 15 yds of full collection

Fill your room with jewels! This dazzling collection spotlights necklaces, watches and rings. The amazing color crush prints bring a brightness and flow to the collection! They are also available as Widebacks!



SCAN TO ORDER  
PRECIOUS METALS



CX11539 BLACK  
BAUBLES AND BANGLES



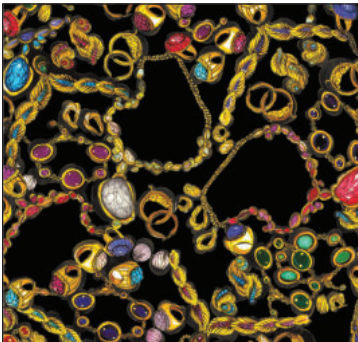
CX11539 WHITE  
BAUBLES AND BANGLES



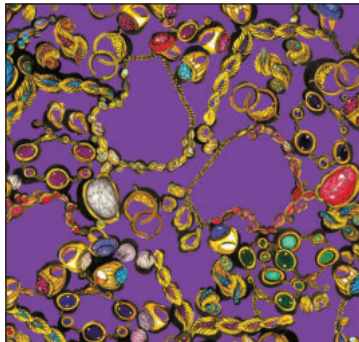
CX11540 AQUA  
QUALITY TIME



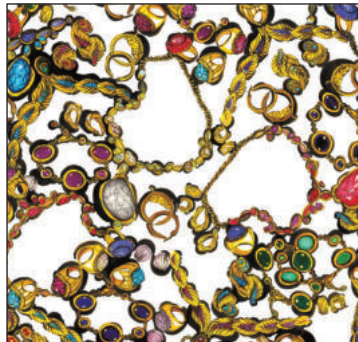
CX11540 WHITE  
QUALITY TIME



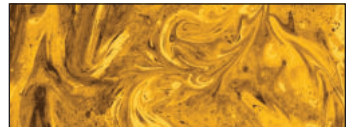
CX11541 BLACK  
HEAVY METAL



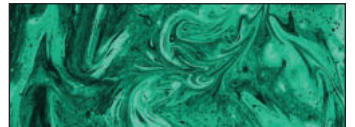
CX11541 PURPLE  
HEAVY METAL



CX11541 WHITE  
HEAVY METAL



CX11543 GOLD  
COLOR CRUSH



CX11543 JADE  
COLOR CRUSH



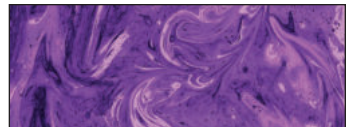
CX11542 BLACK  
CHUNKY CHAINS



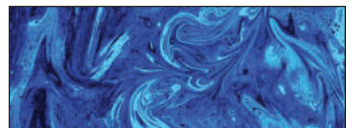
CX11544 BLACK  
PRECIOUS GEMS



CX11544 ROYAL  
PRECIOUS GEMS



CX11543 PURPLE  
COLOR CRUSH



CX11543 ROYAL  
COLOR CRUSH





SCAN FOR  
KITTING INFO

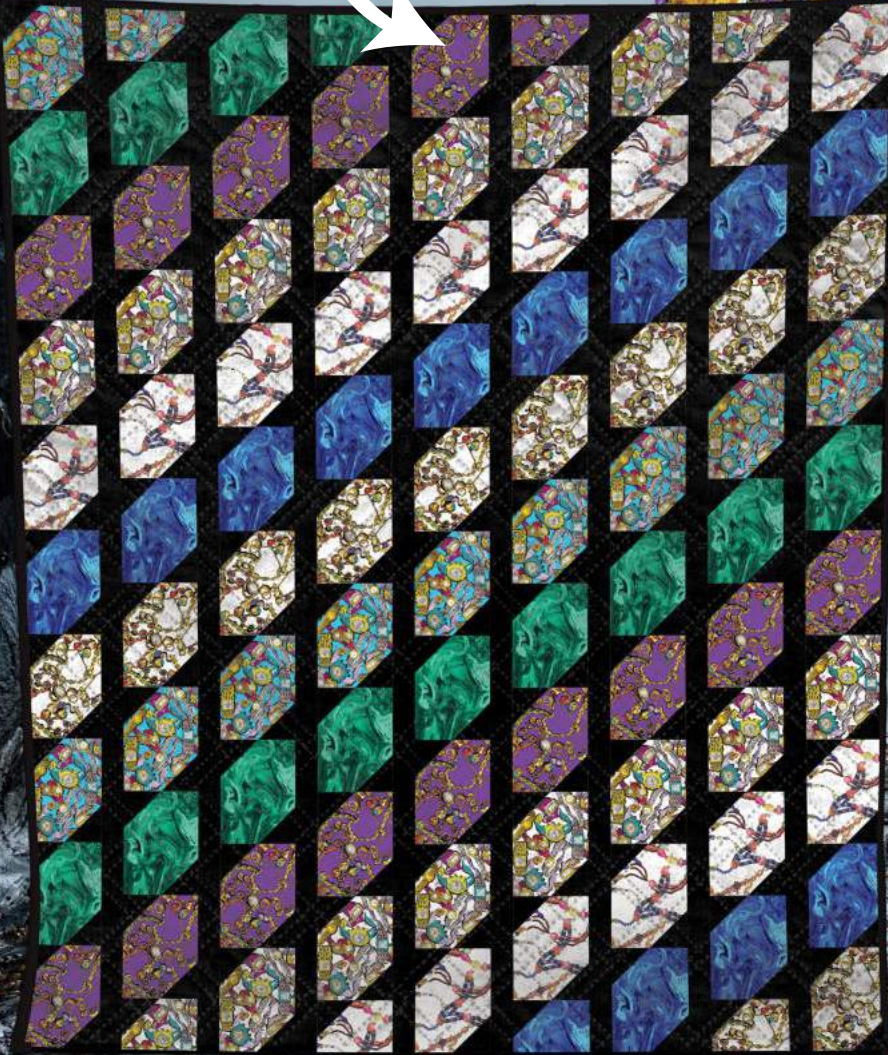
### Costume Jewelry Quilt

by Natalie Crabtree of  
Crabtree Arts Collective

SIZE: 57" W X 70" H

LEVEL: BEGINNER

FREE PATTERN AVAILABLE AT  
[WWW.MICHAELMILLERFABRICS.COM](http://WWW.MICHAELMILLERFABRICS.COM)



### Barcelona Quilt

by Everyday Stitches

SIZE: 54" W X 63" H

LEVEL: INTERMEDIATE

COMMERCIAL PATTERN AVAILABLE AT  
[WWW.EVERYDAYSTITCHES.COM](http://WWW.EVERYDAYSTITCHES.COM),  
CHECKER DISTRIBUTORS & BREWER



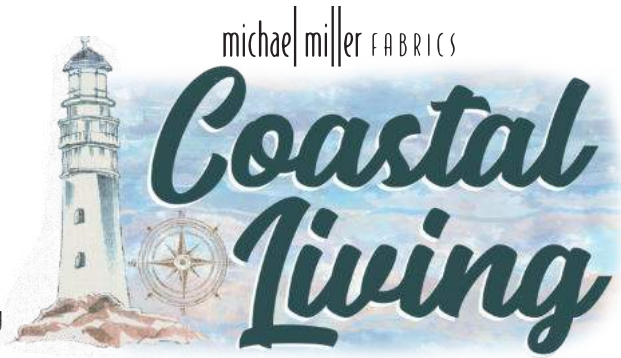
SCAN FOR  
KITTING INFO



SCAN TO ORDER  
COASTAL LIVING



Decorate your home by the water with the "Coastal Living" collection. Mellow, muted tones bring that soft beachy vibe to any space. Featuring boats, lighthouses, shells and seagulls, these fabrics make the perfect beach house quilt.



SHIPPING FEBRUARY 2024

16 NEW SKUS

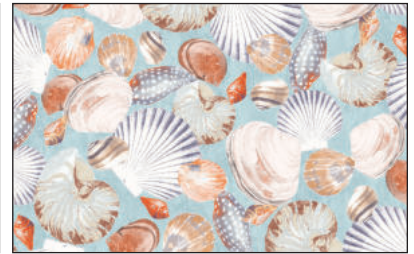
CAS0373 Coastal Living 10 yds of full collection  
CAS0374 Coastal Living 15 yds of full collection



CX11432 BLUE  
BOATING



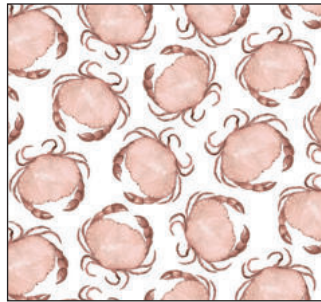
CX11436 BEIGE  
SHELLING



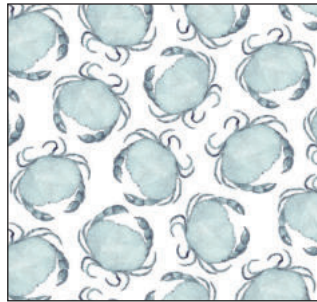
CX11436 BLUE  
SHELLING



CX11433 BEIGE  
NAVIGATING



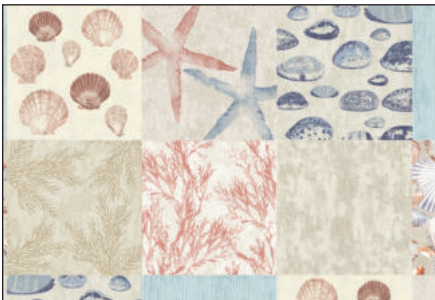
CX11437 SPICE  
CRABBING



CX11437 SKY  
CRABBING



CX11435 BLUE  
SEA BREEZE



CX11434 MULTI  
SEASIDE PATCHWORK



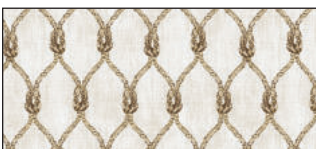
CX11441 BLUE  
BEACONS



CX11441 WHITE  
BEACONS



CX11440 BLUE  
SEAGULL FLOCK



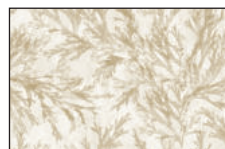
CX11438 BEIGE  
SAILING KNOTS



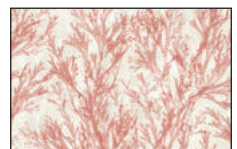
CX11438 RED  
SAILING KNOTS



CX11438 SKY  
SAILING KNOTS



CX11439 BEIGE  
CORAL REEFS



CX11439 RED  
CORAL REEFS





SCAN FOR  
KITTING INFO

### Sail On Quilt

by Marsha Evans Moore

SIZE: 50"W X 50"H

LEVEL: INTERMEDIATE

FREE PATTERN AVAILABLE AT  
[WWW.MICHAELMILLERFABRICS.COM](http://WWW.MICHAELMILLERFABRICS.COM)



### Nautical Stars Quilt

by Fabric Addict

SIZE: 75"W X 87"H

LEVEL: INTERMEDIATE

COMMERCIAL PATTERN  
AVAILABLE AT  
[WWW.FABRICADDICT.NET](http://WWW.FABRICADDICT.NET)  
& CHECKER DISTRIBUTORS

SCAN FOR  
KITTING INFO





SCAN TO ORDER  
GARDEN VARIETY



michael miller FABRICS



Featuring fresh veggies and flowers, the "Garden Variety" collection will have you ready for farmers' market! This collection makes the perfect gift for those gardening lovers in your life. Show off your talent by sewing up some gardening gloves, aprons, and totes.

SHIPPING FEBRUARY 2024

15 NEW SKUS

CAS0397 Garden Variety 10 yds of full collection  
CAS0398 Garden Variety 15 yds of full collection



DCX11530 CHARCOAL  
GARDEN GUIDE



DCX11530 CREAM  
GARDEN GUIDE



DCX11529 MULTI  
GARDEN VARIETY PATCHWORK



DCX11531 CREAM  
VEGETABLE GARDEN



DCX11531 CHARCOAL  
VEGETABLE GARDEN



CX11533 MULTI  
SUNFLOWER STRIPE



CX11532 CREAM  
SUNFLOWER MEADOW



CX11534 CHARCOAL  
HERE COMES THE SUN-FLOWER



CX11534 CREAM  
HERE COMES THE SUN-FLOWER



CX11535 CREAM  
SEASONAL GUIDE





CX11537 ORANGE  
SUNFLOWER TEXTURE



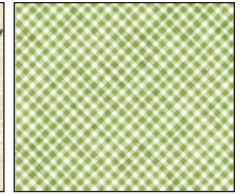
CX11537 CREAM  
SUNFLOWER TEXTURE



CX11536 CHARCOAL  
BE-LEAF ME



CX11536 CREAM  
BE-LEAF ME



CX11538 GREEN  
GINGHAM GARDEN

SCAN FOR  
KITTING INFO



### Country Lanes Quilt

by Brenda Plaster

SIZE: 68 1/2"W X 68 1/2"H

LEVEL: MODERATE

COMMERCIAL PATTERN AVAILABLE AT  
[WWW.PAYHIP.COM](http://WWW.PAYHIP.COM) & EE SCHENCK



### Garden Variety Quilt

by The Whimsical Workshop

SIZE: 63"W X 78"H

LEVEL: INTERMEDIATE

COMMERCIAL PATTERN AVAILABLE AT  
[WWW.THEWHIMSICALWORKSHOP](http://WWW.THEWHIMSICALWORKSHOP),  
CHECKER DISTRIBUTORS & EE SCHENCK

SCAN FOR  
KITTING INFO







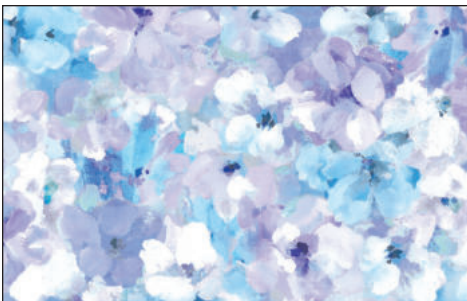
**SCAN TO ORDER  
NOTTING HILL**

Beautiful watercolors of pink, purple, blue and yellow pastels combine to create this lovely collection. These versatile designs are perfect for home dec, apparel, nursery, et al. The soft butterfly, stripe and plaid prints also make for a stunning quilt.

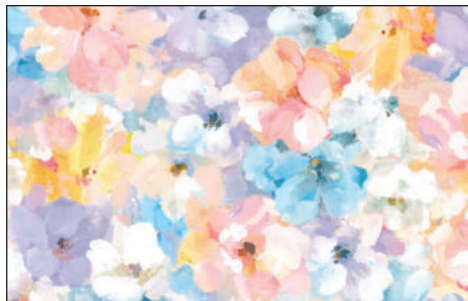
**SHIPPING FEBRUARY 2024**

**14 NEW SKUS**

CAS0399 Notting Hill 10 yds of full collection  
CAS0400 Notting Hill 15 yds of full collection



DCX11599 LILAC  
FADED FLORAL



DCX11599 MULTI  
FADED FLORAL



DCX11599 PINK  
FADED FLORAL



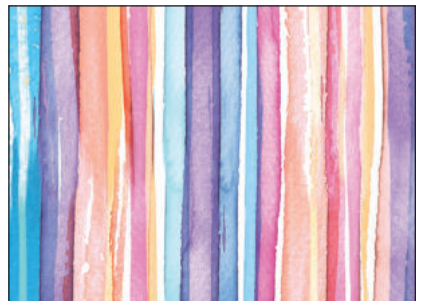
DCX11604 PINK  
BUTTERFLY OASIS



DCX11604 LILAC  
BUTTERFLY OASIS



DCX11600 MULTI  
WATERCOLOR MURAL



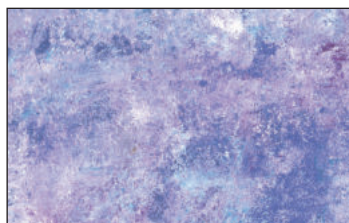
DCX11605 MULTI  
SHABULOUS STRIPE



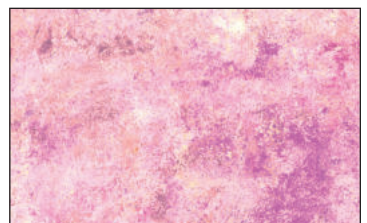
DCX11602 LILAC  
PICK A PETAL



DCX11602 PINK  
PICK A PETAL



DCX11601 LILAC  
MORNING DEW



DCX11601 PINK  
MORNING DEW



DCX11603 LILAC  
PASTORAL PLAID



DCX11603 MULTI  
PASTORAL PLAID



DCX11603 PINK  
PASTORAL PLAID



SCAN FOR  
KITTING INFO



### Mother's Fancy Quilt

by Brenda Plaster

SIZE: 65"W X 95"H

LEVEL: MODERATE

COMMERCIAL PATTERN

AVAILABLE AT

[WWW.PAYHIP.COM](http://WWW.PAYHIP.COM) & EE SCHENCK



### Rockstar Quilt

by The Cloth Parcel

SIZE: 72"W X 72"H

LEVEL: ADVANCED BEGINNER

COMMERCIAL PATTERN AVAILABLE AT

[WWW.THECLOTHPARCEL.COM](http://WWW.THECLOTHPARCEL.COM),

CHECKER DISTRIBUTORS & BREWER



SCAN FOR  
KITTING INFO





SCAN TO ORDER  
PATINA

michael miller FABRICS  
**PATINA**

SHIPPING JANUARY 2024

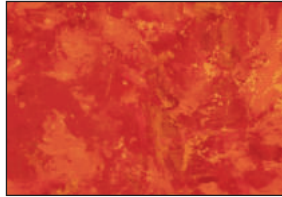
**30 NEW SKUS**

See page 42 for Patina precuts

We're excited to launch a very new basic called Patina. This soft textured, yet rich colored print comes in 30 incredible colors covering many ranges of hue. It makes for a stunning quilt on its own or can be combined with any collection to add color and texture. It also comes in 4 varieties of precuts, Fat Quarter, Roll, 10" Square, and 5" charm.



DCX11756 CHERRY



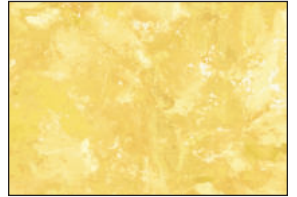
DCX11756 CLEMENTINE



DCX11756 ORANGE



DCX11756 DAISY



DCX11756 SUNSHINE



DCX11756 JAM



DCX11756 VIOLET



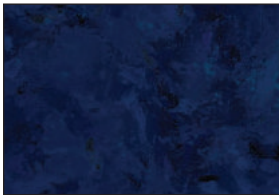
DCX11756 PURPLE



DCX11756 PLUM



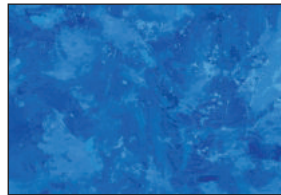
DCX11756 FUSCHIA



DCX11756 NAVY



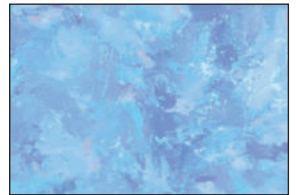
DCX11756 BLUE



DCX11756 SAPPHIRE



DCX11756 STREAM



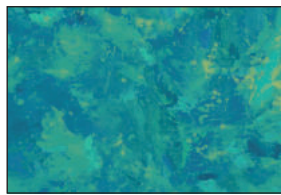
DCX11756 CARIBBEAN



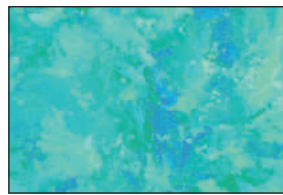
DCX11756 OCEAN



DCX11756 PEACOCK



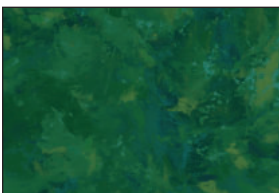
DCX11756 EMERALD



DCX11756 MERMAID



DCX11756 SPROUT



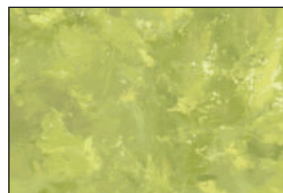
DCX11756 PINE



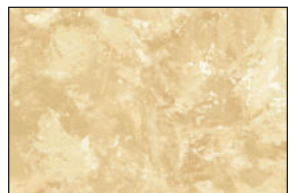
DCX11756 JADE



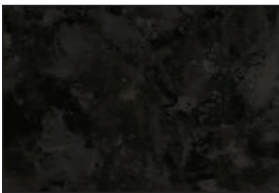
DCX11756 OLIVE



DCX11756 AVOCADO



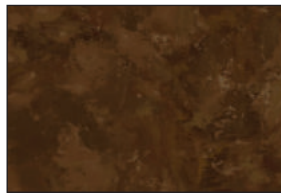
DCX11756 HONEY



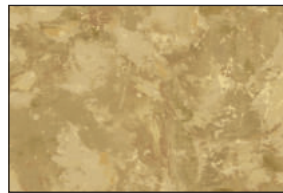
DCX11756 BLACK



DCX11756 GRAY



DCX11756 BROWN



DCX11756 BAMBOO



DCX11756 MOON



SCAN FOR  
KITTING INFO



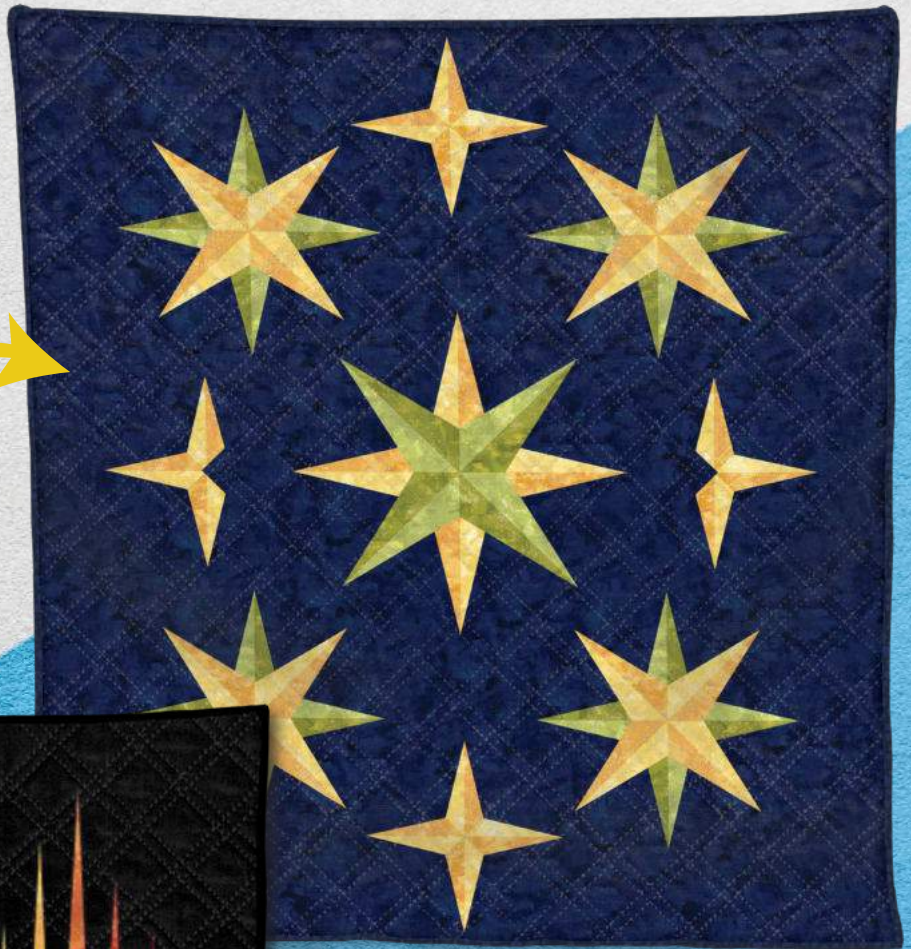
### Compass Points Quilt

by Tamarinis

SIZE: 54"W X 60"H

LEVEL: CONFIDENT BEGINNER

COMMERCIAL PATTERN AVAILABLE  
AT [WWW.TAMARINIS.COM](http://WWW.TAMARINIS.COM)  
& CHECKER DISTRIBUTORS



### Sound Waves Quilt

by Tamarinis

SIZE: 44"W X 60"H

LEVEL: CONFIDENT BEGINNER

COMMERCIAL PATTERN AVAILABLE  
AT [WWW.TAMARINIS.COM](http://WWW.TAMARINIS.COM)  
& CHECKER DISTRIBUTORS

SCAN FOR  
KITTING INFO



**MADE WITH  
PATINA  
ROLL0355**



# Wisteria Lane

SHIPPING FEBRUARY 2024



SCAN TO ORDER  
WISTERIA LANE

This wistful wisteria collection will have you feeling like you can smell the flowers right off the fabric. Enjoy a leisurely stroll through all the windowpane blocks in our Wisteria Scenic print. It is a perfect collection for garden dresses and sunroom quilts.

## 15 NEW SKUS

CAS0300 Wisteria Lane 10 yds of full collection  
CAS0301 Wisteria Lane 15 yds of full collection



DCX11077 AMETHYST  
WISTERIA



DCX11077 JEWEL  
WISTERIA



DCX11077 MIDNITE  
WISTERIA



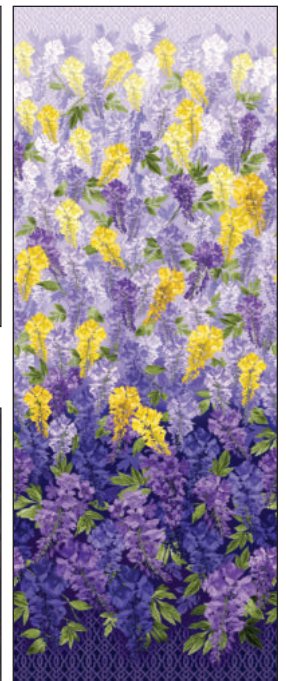
DCX11080 CITRON  
WISTERIA BREEZE



DCX11080 AMETHYST  
WISTERIA BREEZE



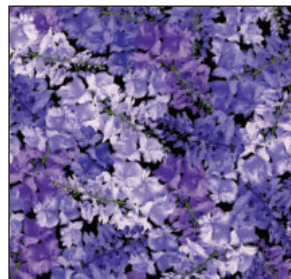
DCX11081 CITRON  
WISTERIA LANE STRIPE



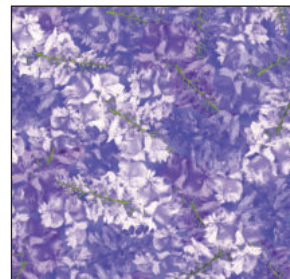
DCX11076 JEWEL  
WISTERIA LANE BORDER



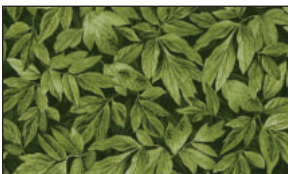
DCX11075 AMETHYST  
WISTERIA SCENIC



DCX11079 SAPPHIRE  
WISTERIA PETALS



DCX11079 OPAL  
WISTERIA PETALS



DCX11078 JUNIPER  
WISTERIA LEAVES



DCX11078 SAGE  
WISTERIA LEAVES



CX11082 AMETHYST  
WISTERIA TRELLIS



CX11082 CITRON  
WISTERIA TRELLIS



CX11082 GRAPE  
WISTERIA TRELLIS



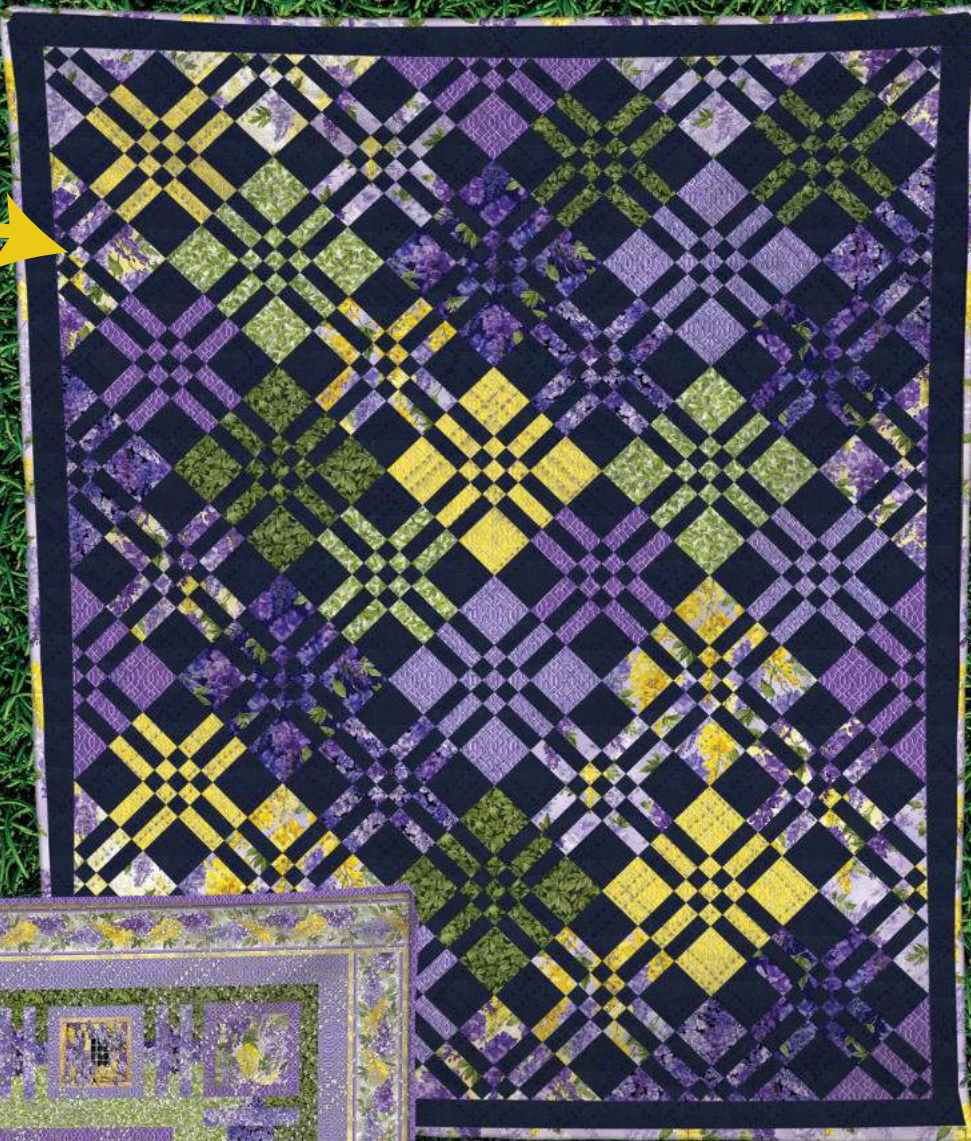
## Olive and Hazel Quilt

by Cheryl Brickley of  
Meadow Mist Designs

COMMERCIAL PATTERN AVAILABLE AT  
[WWW.MEADOWMISTDESIGNS.COM](http://WWW.MEADOWMISTDESIGNS.COM),  
CHECKER DISTRIBUTORS & BREWER



SCAN FOR  
KITTING INFO



## Wisteria Lane Quilt

by Brenda Plaster

SIZE: 78" W X 84" H

LEVEL: ADVANCED BEGINNER

FREE PATTERN AVAILABLE AT  
[WWW.MICHAELMILLERFABRICS.COM](http://WWW.MICHAELMILLERFABRICS.COM)



SCAN FOR  
KITTING INFO



SCAN TO ORDER  
BABY LOVE



michael miller FABRICS

# BABY LOVE

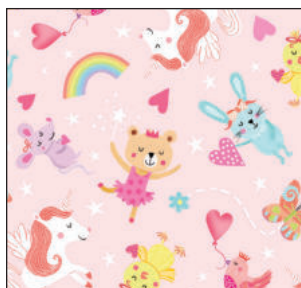
BY TRACY COTTINGHAM

Get ready for a gender reveal party with Baby Love. Adorable rompers, rainbows and ribbons fill this lovable collection. "Baby Love" makes for great baby shower decor and reusable wrapping paper. These darling "Sugar and Spice" block prints can be fussy cut for easy quilting.

SHIPPING MARCH 2024

CAS0375 Baby Love 10 yds of full collection  
CAS0376 Baby Love 15 yds of full collection

## 16 NEW SKUS



DC11588 PINK  
PRINCESS TOYS



DC11594 BEIGE  
BABY GIRAFFE



DC11592 PINK  
BABY BUTTERFLY



DC11595 PINK  
SUGAR AND SPICE GIRLS



DC11591 PINK  
BABY ELEPHANT



DC11586 PINK  
ROMPERS



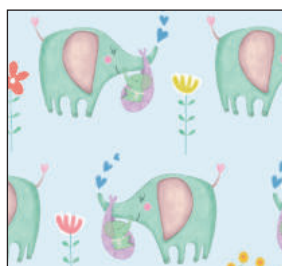
DC11587 BEIGE  
PITTER PATTER



DC11597 PINK  
WELCOME BABY GIRL



DC11598 BLUE  
WELCOME BABY BOY



DC11591 BLUE  
BABY ELEPHANT



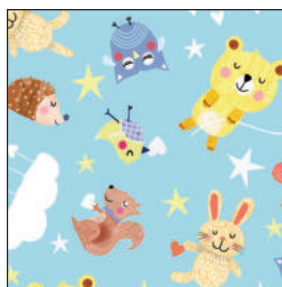
DC11586 BLUE  
ROMPERS



DC11587 BLUE  
PITTER PATTER



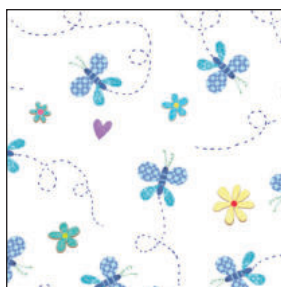
DC11596 BLUE  
WELCOME BABY BOY



DC11589 BLUE  
LITTLE PRINCE TOYS



DC11594 MINT  
BABY GIRAFFE



DC11592 SKY  
BABY BUTTERFLY



SCAN FOR  
KITTING INFO



## Gender Reveal Quilt (Pink)

by Marsha Evans Moore

SIZE: 49 1/2"W X 60 3/4"H | LEVEL: INTERMEDIATE

FREE PATTERN AVAILABLE AT  
[WWW.MICHAELMILLERFABRICS.COM](http://WWW.MICHAELMILLERFABRICS.COM)

## Gender Reveal Quilt (Blue)

by Marsha Evans Moore

SIZE: 49 1/2"W X 60 3/4"H

LEVEL: INTERMEDIATE

FREE PATTERN AVAILABLE AT  
[WWW.MICHAELMILLERFABRICS.COM](http://WWW.MICHAELMILLERFABRICS.COM)



SCAN FOR  
KITTING INFO





michael miller FABRICS

# I Heart Kitsch

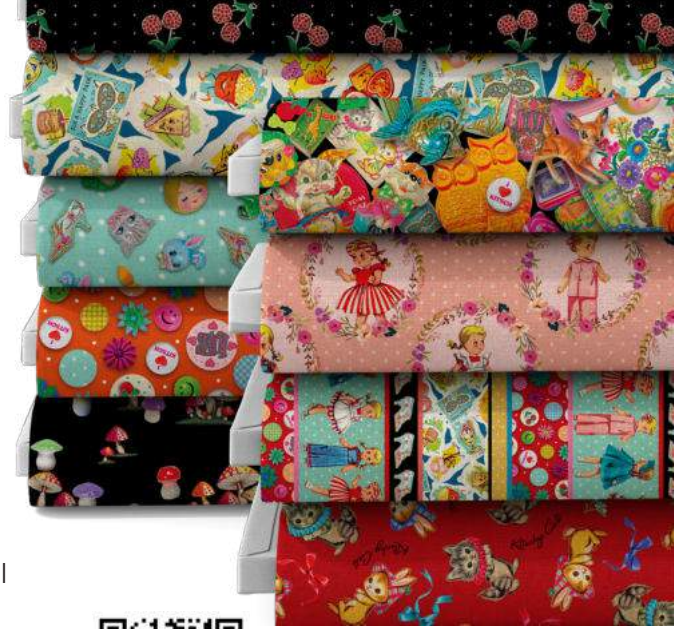
by Aimee Stewart

SHIPPING MARCH 2024

## 15 NEW SKUS

The "I Heart Kitsch" collection is the epitome of Aimee Stewart's joy and delight over the quirky charm of all things Kitsch. The vibrant colors, playful collectibles and zany aesthetic is a delightful way to embrace the fun side of life and spark happiness. Each item is taken directly from Aimee's own collection that she keeps at her art studio, surrounding her with whimsical charm whenever she is creating new art.

CAS0385 I Heart Kitsch 10 yds of full collection  
CAS0386 I Heart Kitsch 15 yds of full collection



SCAN TO ORDER  
I HEART KITSCH

### Sewing Basket Quilt

by Tammy Silvers of Tamirinis

SIZE: 48"W X 62"H

LEVEL: INTERMEDIATE

SCAN FOR  
KITTING INFO



COMMERCIAL PATTERN AVAILABLE AT  
[WWW.TAMIRINIS.COM](http://WWW.TAMIRINIS.COM)

### Washi Tape Quilt

by Natalie Crabtree of  
Crabtree Arts Collective

SIZE: 60"W X 71"H

LEVEL: BEGINNER

SCAN FOR  
KITTING INFO



FREE PATTERN AVAILABLE AT  
[WWW.MICHAELMILLERFABRICS.COM](http://WWW.MICHAELMILLERFABRICS.COM)





DDC11640 MULTI  
KITSCHY ALLOVER



DDC11641 AQUA  
RETRO BABY ANIMALS



DDC11641 PINK  
RETRO BABY ANIMALS



DDC11643 CREAM  
KITSCHY CATS



DDC11643 RED  
KITSCHY CATS



DDC11644 MULTI  
KITSCHY STRIPE



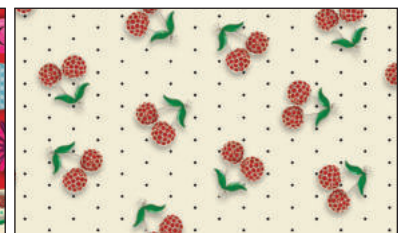
DDC11646 PEACH  
KITSCHY KIDS



DDC11642 ORANGE  
KITSCHY POM POMS



DDC11642 RED  
KITSCHY POM POMS



DDC11648 CREAM  
KITSCHY CHERRIES



DDC11648 BLACK  
KITSCHY CHERRIES



DDC11645 AQUA  
KITSCHY MUSHROOMS



DDC11645 BLACK  
KITSCHY MUSHROOMS



DDC11647 BLUE  
KITSCHY CARDS



DDC11645 PINK  
KITSCHY CHERRIES





SCAN TO ORDER  
SEA WORLD



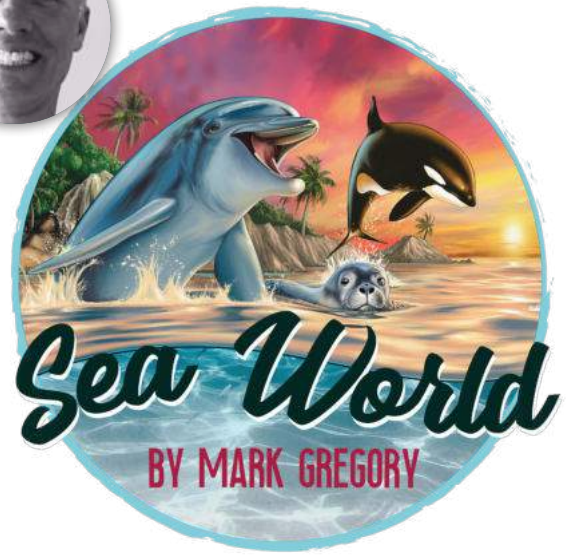
Mark spends his free time with his young children on the beautiful beaches of south west Scotland. His paintings are inspired by his time spent exploring the sea, both home and abroad. Mark loves to capture the plethora of creatures that we are lucky to share our world with and depicts the vivid palette Mother Nature has created.

CAS0379 Sea World 10 yds of full collection  
CAS0380 Sea World 15 yds of full collection

SHIPPING MARCH 2024



michael miller FABRICS



16 NEW SKUS







DDC11486 BLACK  
SPLASHTASTIC



DDC11486 BLUE  
SPLASHTASTIC



DDC11486 ROYAL  
SPLASHTASTIC



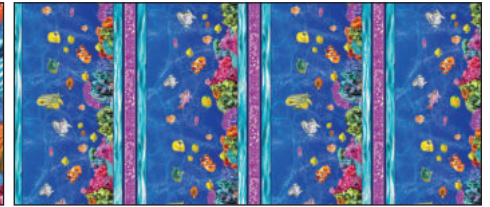
DDC11487 BEIGE  
SHELL-E-BRATION



DDC11487 BLACK  
SHELL-E-BRATION



DDC11487 BLUE  
SHELL-E-BRATION



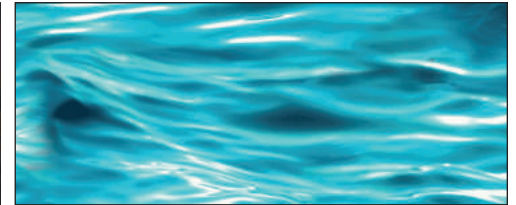
DDC11492 MULTI  
CRAY-SEA-STRIFE



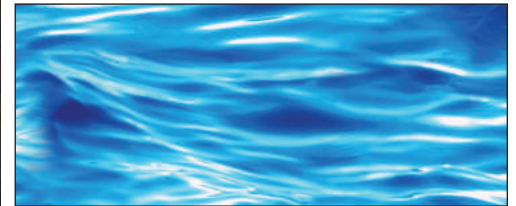
DDC11489 MULTI  
DISCOVERY COVE BORDER



DDC11485 MULTI  
TREASURE TROVE PANEL



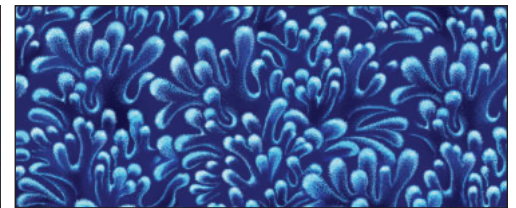
DDC11488 AQUA  
RIPPLING WAVES



DDC11488 BLUE  
RIPPLING WAVES



DDC11491 AQUA  
SQUID PRO QUO



DDC11493 ROYAL  
BUBBLE CORAL



DDC11494 ROYAL  
WHALE WATCHING



DDC11490 AQUA  
TURTLE RECALL



DDC11490 ROYAL  
TURTLE RECALL



# Night on the Town Quilt

by Bea Lee

SIZE: 48"W X 60"H | LEVEL: CONFIDENT BEGINNER



SCAN FOR  
KITTING INFO



COMMERCIAL PATTERN AVAILABLE AT [WWW.BEAQUILTER.COM](http://WWW.BEAQUILTER.COM)



# Panel Pop Quilt

by Swirly Girls Design

SIZE: 44"W X 54"H

LEVEL: CONFIDENT BEGINNER



COMMERCIAL PATTERN AVAILABLE AT  
[WWW.SWIRLYGIRLSDESIGN.COM](http://WWW.SWIRLYGIRLSDESIGN.COM) & CHECKER DISTRIBUTORS



SCAN FOR  
KITTING INFO



SCAN TO ORDER  
YUMMY SCRUMMY DAY



The inspiration behind Belle and Boo's latest fabric collection, Yummy Scrummy Day, is inspired by the childhood nostalgia of baking with parents and grandparents, making not just cakes, but making memories too. From days spent in the kitchen, surrounded by the sweet aromas and the anticipation of a delicious treat to admiring the beauty of decadent cake, this fabric collection serves as a tribute to the warmth, comfort baking brings, allowing everyone to enjoy a slice of sweetness into their everyday lives.

CAS0383 Yummy Scrummy Day 10 yds of full collection  
CAS0384 Yummy Scrummy Day 15 yds of full collection

17 NEW SKUS

SHIPPING MARCH 2024



DC11567 GREEN  
TEA PARTY PICNIC



DC11567 YELLOW  
TEA PARTY PICNIC



DC11567 WHITE  
TEA PARTY PICNIC



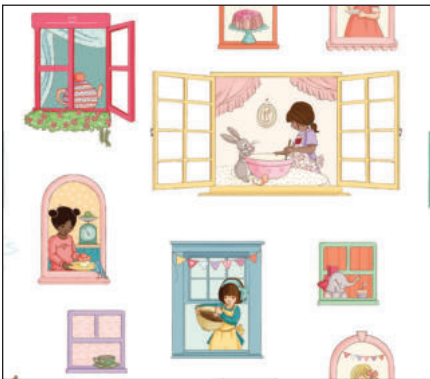
DC11574 GREEN  
PATISSERIE



DC11574 PINK  
PATISSERIE



DC11573 WHITE  
DONUTS



DC11568 WHITE  
BAKE SOMEONE HAPPY



DC11569 GREEN  
CAKES



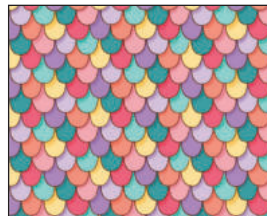
DC11569 WHITE  
CAKES



DC11575 GREEN  
SUGAR FLOWERS



DC11572 MULTI  
CONFECTIONS



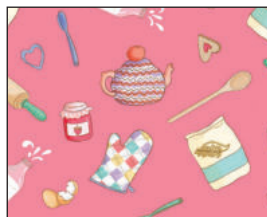
DC11571 MULTI  
SCALLOPED EDGES



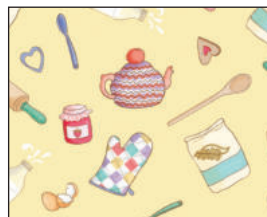
DC11575 PINK  
SUGAR FLOWERS



DC11576 MULTI  
LIFE IS BETTER WITH CAKE



DC11570 PEACH  
BAKEWARE



DC11570 YELLOW  
BAKEWARE



DC11575 YELLOW  
SUGAR FLOWERS



**SCAN FOR  
KITTING INFO**



### Sweetie Pie Quilt

by Natalie Crabtree of  
Crabtree Arts Collective

SIZE: 46" W X 60" H

LEVEL: BEGINNER

FREE PATTERN AVAILABLE AT  
[WWW.MICHAELMILLERFABRICS.COM](http://WWW.MICHAELMILLERFABRICS.COM)



### Pumpkin Vines Quilt

by Bea Lea

SIZE: 45" W X 54" H

LEVEL: EXPERIENCED BEGINNER

COMMERCIAL PATTERN  
AVAILABLE AT  
[WWW.BEAQUILTER.COM](http://WWW.BEAQUILTER.COM)



**SCAN FOR  
KITTING INFO**





SCAN TO VIEW  
FULL WIDEBACK  
COLLECTION HERE

michael miller FABRICS

108"

# WIDE BACKS

NEW!

SHIPPING NOVEMBER 2023

27 NEW SKUS

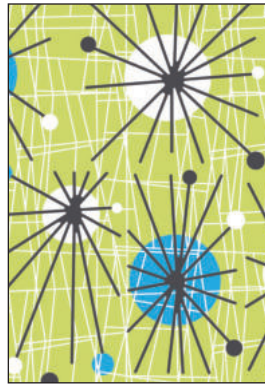
We're proud to be releasing 27 new designs to our Wideback selections! These beautiful new prints are sure to be wonderful backing to all your quilts!



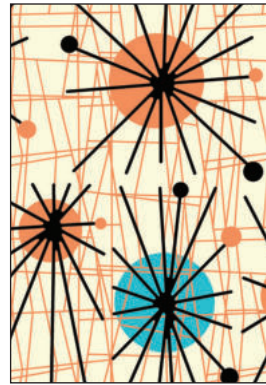
WBX9445 PINK  
PERFUME LABELS



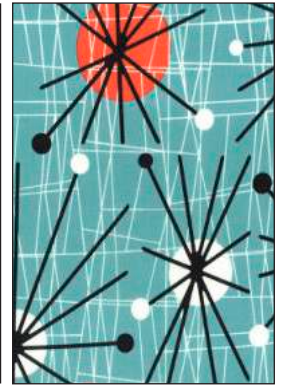
WBX11306 MAHOGANY  
TOOLED LEATHER



WBX5440 KRYPTONITE  
ATOMIC



WBX5440 VANILLA  
ATOMIC



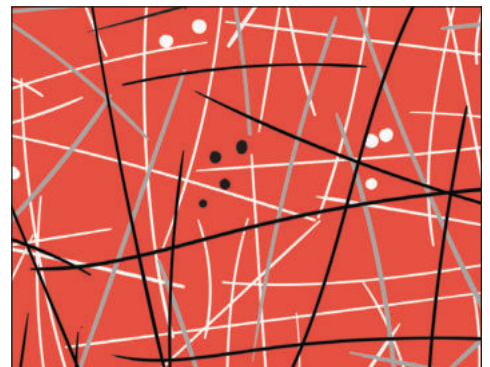
WBX5440 TURQUOISE  
ATOMIC



WBX8713 BLACK  
SWIZZLE STICK



WBX8713 BLUE  
SWIZZLE STICK



WBX8713 RED  
SWIZZLE STICK



WBX10231 BLUE  
FRESH BOUQUET



WBX10231 RED  
FRESH BOUQUET



WBX11197 ROSE  
ROSE MARIE GARDEN



WBX3059 BLACK  
SCARLETT POINSETTIA





WBX11543 GOLD  
COLOR CRUSH



WBX11543 JADE  
COLOR CRUSH



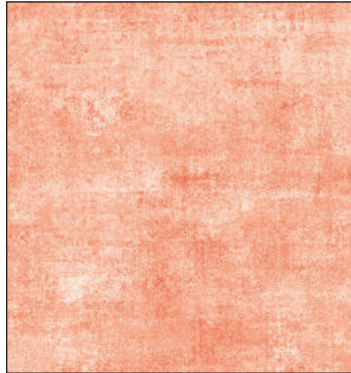
WBX11543 PURPLE  
COLOR CRUSH



WBX11543 ROYAL  
COLOR CRUSH



WBX10060 BLUSH  
FRESCO



WBX10060 PEACH  
FRESCO



WBX10060 CLEMENTINE  
FRESCO



WBX10060 PARCHMENT  
FRESCO



WBX10060 POWDER  
FRESCO



WBX10060 ICE  
FRESCO



WBX10060 LILAC  
FRESCO



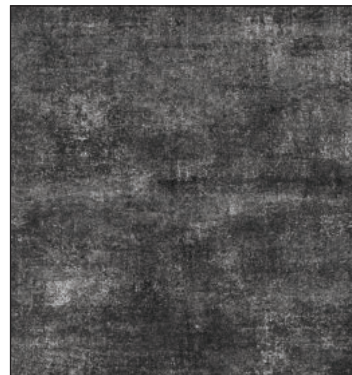
WBX10060 CLOUD  
FRESCO



WBX10060 EMERALD  
FRESCO



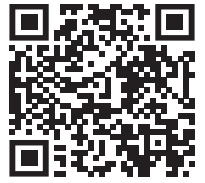
WBX10060 CARAMEL  
FRESCO



WBX10060 CHARCOAL  
FRESCO



# JULY 2023 NEW PRE-CUTS



SCAN TO VIEW  
ALL PRE-CUTS

## FAIRY FROST

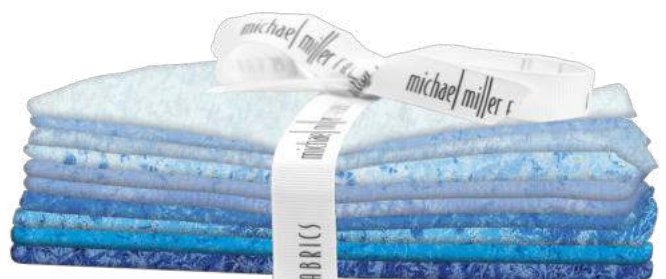
**FQ0341 - FLORA**



### FAT QUARTER BUNDLE

10 PCS PER BUNDLE | 18" X 22" PIECES  
100% COTTON METALLIC  
PACKAGED 3 BUNDLES PER CARTON  
SHIPPING OCTOBER 2023

**FQ0339 - ICE**



### FAT QUARTER BUNDLE

10 PCS PER BUNDLE | 18" X 22" PIECES  
100% COTTON METALLIC  
PACKAGED 3 BUNDLES PER CARTON  
SHIPPING OCTOBER 2023

**FQ0338 - FIRE**



### FAT QUARTER BUNDLE

8 PCS PER BUNDLE | 18" X 22" PIECES  
100% COTTON METALLIC  
PACKAGED 3 BUNDLES PER CARTON  
SHIPPING OCTOBER 2023

**FQ0340 - FAUNA**



### FAT QUARTER BUNDLE

8 PCS PER BUNDLE | 18" X 22" PIECES  
100% COTTON METALLIC  
PACKAGED 3 BUNDLES PER CARTON  
SHIPPING OCTOBER 2023



**Flower Box Quilt**  
by Marsha Evans Moore



USING  
FQ0341  
FLORA

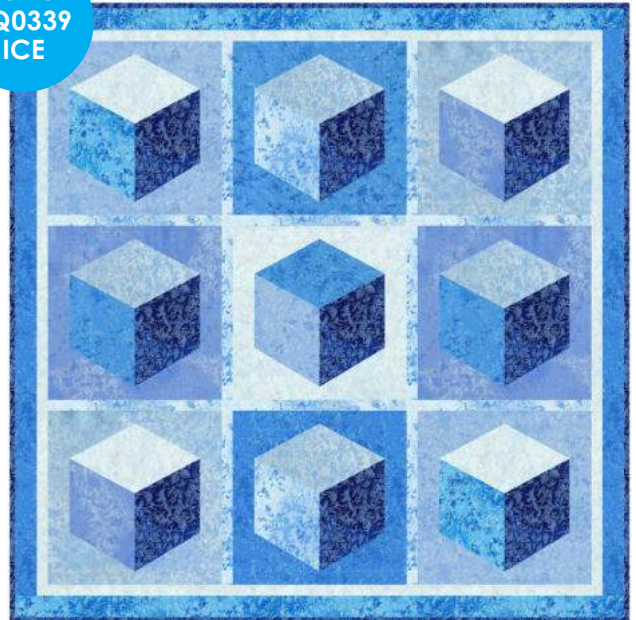


SIZE: 36"W X 36"H | LEVEL: INTERMEDIATE  
FREE PATTERN AVAILABLE AT  
[WWW.MICHAELMILLERFABRICS.COM](http://WWW.MICHAELMILLERFABRICS.COM)

**Ice Cubes Quilt**  
by Marsha Evans Moore



USING  
FQ0339  
ICE



SIZE: 28 1/2"W X 28 1/2"H | LEVEL: INTERMEDIATE  
FREE PATTERN AVAILABLE AT  
[WWW.MICHAELMILLERFABRICS.COM](http://WWW.MICHAELMILLERFABRICS.COM)

USING  
FQ0338  
FIRE

**Candlelight Quilt**  
by Marsha Evans Moore



SIZE: 29 1/2"W X 19"H | LEVEL: INTERMEDIATE  
FREE PATTERN AVAILABLE AT  
[WWW.MICHAELMILLERFABRICS.COM](http://WWW.MICHAELMILLERFABRICS.COM)

**In The Glade Quilt**  
by Marsha Evans Moore



USING  
FQ0340  
FAUNA



SIZE: 29 1/2"W X 29 1/2"H | LEVEL: INTERMEDIATE  
FREE PATTERN AVAILABLE AT  
[WWW.MICHAELMILLERFABRICS.COM](http://WWW.MICHAELMILLERFABRICS.COM)



# Garden PRISM PINDOT

## FQ0358



12 PCS PER BUNDLE  
18" X 22" PIECES  
100% COTTON

PACKAGED 3 BUNDLES PER CARTON  
SHIPPING SEPTEMBER 2023

## ROLL0358



40 PCS PER BUNDLE  
2 1/2" X 44" PIECES  
100% COTTON

PACKAGED 5 ROLLS PER CARTON  
SHIPPING SEPTEMBER 2023

## SQUARE0358



42 PCS PER BUNDLE  
10" X 10" PIECES  
100% COTTON

PACKAGED 5 SQUARES PER CARTON  
SHIPPING SEPTEMBER 2023

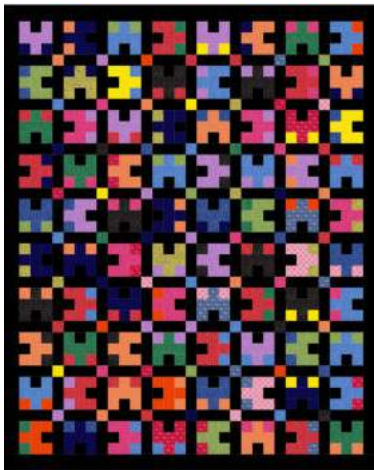
## CHARM0358



42 PCS PER BUNDLE  
5" X 5" PIECES  
100% COTTON

PACKAGED 10 CHARMS PER CARTON  
SHIPPING SEPTEMBER 2023

### Scatterbrained Quilt by Bea Lee



FEATURING

**ROLL0358**

SIZE: 68"W X 84"H  
LEVEL: BEGINNER

FREE PATTERN AVAILABLE AT  
[WWW.MICHAELMILLERFABRICS.COM](http://WWW.MICHAELMILLERFABRICS.COM)



SCAN FOR  
KITTING INFO

### Color Storm Quilt by Siobhan of CDM365 Studios



FEATURING

**SQUARE0358**

SIZE: 60"W X 60"H  
LEVEL: BEGINNER

COMMERCIAL PATTERN  
AVAILABLE AT  
[WWW.CDM365STUDIOS.COM](http://WWW.CDM365STUDIOS.COM)



SCAN FOR  
KITTING INFO

### Morning Dew Quilt by Bea Lee



FEATURING

**FQ0358**

SIZE: 58"W X 74"H  
LEVEL: BEGINNER

FREE PATTERN AVAILABLE AT  
[WWW.MICHAELMILLERFABRICS.COM](http://WWW.MICHAELMILLERFABRICS.COM)



SCAN FOR  
KITTING INFO



michael miller FABRICS

# PATINA

## FQ0355 FAT QUARTER BUNDLE



30 PCS PER BUNDLE | 18" X 22" PIECES  
100% COTTON  
PACKAGED 3 BUNDLES PER CARTON  
SHIPPING JANUARY 2024

## ROLL0355



40 PCS PER BUNDLE | 2 1/2" X 44" PIECES  
100% COTTON  
PACKAGED 5 ROLLS PER CARTON  
SHIPPING JANUARY 2024

## SQUARE0355



42 PCS PER BUNDLE | 10" X 10" PIECES  
100% COTTON  
PACKAGED 5 SQUARES PER CARTON  
SHIPPING JANUARY 2024

## CHARM0355



42 PCS PER BUNDLE | 5" X 5" PIECES  
100% COTTON  
PACKAGED 10 CHARMS PER CARTON  
SHIPPING JANUARY 2024

**\*See back page for quilts  
featuring these precuts**



FEATURING **FQ0355**



**Nighttime on the River Quilt**  
by Bea Lee

SIZE: 69"W X 81"H | LEVEL: BEGINNER  
COMMERCIAL PATTERN AVAILABLE AT  
[WWW.BEAQUILTER.COM](http://WWW.BEAQUILTER.COM)



SCAN FOR  
KITTING INFO

FEATURING **ROLL0355**

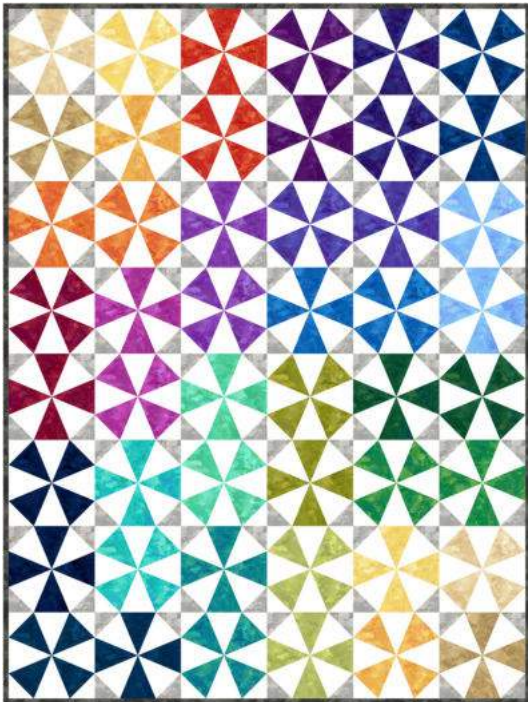


**Jelly Roll Squared Quilt**

by Siobhan of CDM365 Studios  
SIZE: 60"W X 60"H | LEVEL: BEGINNER  
COMMERCIAL PATTERN AVAILABLE AT  
[WWW.CDM365STUDIOS.COM](http://WWW.CDM365STUDIOS.COM)



SCAN FOR  
KITTING INFO



FEATURING **SQUARE0355**

**Spinning Pie Plates Quilt**  
by Material Girlfriends

SIZE: 48"W X 64"H | LEVEL: CONFIDENT BEGINNER

COMMERCIAL PATTERN AVAILABLE AT  
[WWW.MATERIALGIRLFRIENDS.COM](http://WWW.MATERIALGIRLFRIENDS.COM)



SCAN FOR  
KITTING INFO

[WWW.MICHAELMILLERFABRICS.COM](http://WWW.MICHAELMILLERFABRICS.COM) | [@MICHAELMILLERFABRICS](https://twitter.com/MICHAELMILLERFABRICS)  
FOR MORE INFORMATION, PLEASE CONTACT YOUR SALES REP  
OR YOUR ACCOUNT MANAGER

p.215.704.0774 | [info@michaelmillerfabrics.com](mailto:info@michaelmillerfabrics.com)